

märklin®

RETAIL PRICE LIST

(Effective January 1, 1991)

All Prices are Listed at Suggested Retail
Item 2626

RETAIL SALES POLICY

Märklin, Inc. sells only through authorized Märklin dealers. Märklin, Inc. does not sell directly to individuals. To locate the Authorized Märklin Dealer nearest to you, please write to: Märklin, P.O. Box 51559, New Berlin, WI 53151-0559 or call 1-800-825-0888.

WARRANTY

Märklin, Inc. warrants that its products are free from defects in materials and workmanship for a period of one year from the date of purchase. If there is any defect, return that item with proof of purchase to your authorized Märklin Dealer. Defects arising from abuse, improper maintenance or misuse are not covered in this warranty. This warranty applies ONLY to purchases made through Authorized Dealers in North America.

DIGITAL WARRANTY

All locomotive decoder panels (2-rail and 3-rail) are sold only to Authorized Digital dealers for installation. The 3-rail decoder panels will be covered under Märklin, Inc.'s limited warranty only if they are installed by an Authorized Digital Dealer, or by Märklin, Inc. The 2-rail decoder panel will be covered under Märklin, Inc.'s warranty only for its electronic functions. The 2-rail decoder panel will not be covered under warranty for its installation or for its compatibility with the locomotive in which it is being installed.

SYMBOLS

† Special U.S. Prototypes
(D) Discontinued Item
(E) Export Item
(L) Limited Run Item
(P) Primex Item
* 1991 New Items
(HOB) Hobby Program

SCALE

H — HO Gauge
Z — Z-Gauge
1 — 1-Gauge
D — Digital
M — Metall
S — Spare Part
P — Promotional
A — Alpha

NOTE: Availability of Discontinued, Export, and Limited Run items cannot be guaranteed.

ABBREVIATIONS

BLS	Bern Lotschberg Simplon Railroad
CFL	Luxemburg State Railways
DB	German Federal Railroad
DRG	German State Railroad (1920-1945)
DRG Alsace-Lorraine	German State Railroad Alsace-Lorraine Deutsche Reichsbahn Elsass-Lothringen
DSB	Danish State Railways
FS	Italian State Railways
GHMFFE	Grand Ducal Mecklenburg Friedrich Franz Railroad (Grossherzoglich Mecklenburgischen Friedrich-Franz-Eisenbahn)
K. BAY.STS.B.	Royal Bavarian State Railroad
KPEV	Royal Prussian Railroad Administration
K.W.ST.E.	Royal Wurttemberg State Railways
KSSTE	Royal Saxon State Railways (Königlich Sächsischen Staatseisenbahnen)
NS	Dutch Railways
NSB	Norwegian State Railways
OBB	Austrian Federal Railways
SBB	Swiss Federal Railways
SJ	Swedish Railways
SNCB	Belgian State Railways
SNCF	French State Railways
SOB	Swiss Southeast Railroad (Südostbahn)
DBP	German Federal Postal System

***SEE SPECIAL INSERT FOR
NON-CATALOGED ITEMS AVAILABLE.**

Available From:

MÄRKLIN'S PRODUCT LINES

1 — 1:32 Scale • 1987/89 Catalog #15500
1:32 Scale • 1990/91 Supplement #15520
HO — 1:87 Scale • 1990/91 Catalog #15101
Z — 1:220 Scale • 1988/90 Catalog #15300
1:220 Scale • 1990/91 Supplement #16330

DIGITAL — An electronic control system which allows simultaneous, multi-train operation and simplified wiring. Catalog #16601.

ALPHA — 1:87 Scale. Complete Childrens' Interactive Train System.

METALL — High quality, all metal construction kits. Catalog #16311.

HAMO — HO, two-rail DC system. Line includes locomotives and cars.

PRIMEX — Special limited assortment line compatible with Märklin's HO-Line. Includes Locomotives, Rolling Stock, Building Structures and Scenery Accessories. Catalog #17436. See enclosed special insert for more details.

NEW ITEMS BROCHURE — 1991 New Items Catalog.

AMERICAN Z — See enclosed special insert.

SPECIAL EXPORT PROGRAM

Märklin's Special Export Models Program consists of non-cataloged special models manufactured for certain countries outside of Germany. There is usually only one production run made and, based on demand, they can become limited in quantity. These export models are distributed in the first year to all export countries (Germany is excluded). In subsequent years the remaining inventory is available on a worldwide basis. In some cases the items may be completely sold out at the factory and can no longer be ordered. A separate price list and brochure is available for the 1991 program. See your authorized Märklin Dealer!

Märklin, Inc. maintains no responsibility for inadvertent errors in this price list. All prices are subject to change without notice. All items are invoiced at prices in effect at the time of shipment.

Märklin, Inc. P.O. Box 51319, 16988 W. Victor Road, New Berlin, WI 53151-0319 1-414-784-8854
American Subsidiary of Gebr. Märklin & Cie, GmbH, West Germany and Exclusive Distributor in North America for Märklin Products

ITEM #	DESCRIPTION	SCALE	PRICE	ITEM #	DESCRIPTION	SCALE	PRICE
0024	DECODER TESTER & GROUND KIT	D	256.00	1703	FIRE STATION	(P) H	13.95
0050	50TH ANNIVERSARY HO SET	(L) H	495.00	1704	PUBLIC SWIMMING POOL	(P) H	10.50
0100	DIGITAL DECODER SOLDERING IRON	S	46.00	1705	SAW MILL	(P) H	10.50
0101	VHS VIDEO 'THE GOTTHARD BAHN'	P	62.00	1706	TRACT HOUSES	(P) H	7.95
0102	VHS VIDEO 'RAILWAYS OF THE RHINE'	P	46.95	1707	KINDERGARTEN	(P) H	8.95
0103	VHS VIDEO 'EUROPEAN EXPRESS' Vol. 3	P	37.95	1708	MINEHEAD BUILDING	(P) H	11.95
0104	VHS VIDEO 'THE AUSTRIAN RR'	P	72.00	1709	LIQUID GAS TANK	(P) H	11.95
0107	VHS VIDEO 'THE GERMAN RR TODAY'	P	62.00	1714	FACTORY	(P) H	14.95
0108	VHS VIDEO 'EUROPE ON RAILS'	P	72.00	1719	32 PLUGS/8 SOCKETS	(P) H	10.50
0109	VHS VIDEO 'SWISS RAILWAYS'	P	46.95	1720	STATION PLATFORM LIGHT	(P) H	11.95
0110	VHS VIDEO 'EUROPEAN EXPRESS' VOL. 2	P	37.95	1721	STREET LIGHT	(P) H	10.95
0111	VHS VIDEO 'THE BLACK FOREST RR'	P	62.00	1722	STREET LIGHT	(P) H	12.75
0112	THE RAILWAYS OF NORTH GERMANY VHS	P	46.95	1723	DISTRIBUTION STRIPS	(P) H	6.75
0113	RHATISCHE BAHN VHS	P	46.95	1724	SET OF STREET LIGHTS	(P) H	26.95
0114	ALPINE EXPRESS VHS	P	46.95	1725	STREET LIGHT	(P) H	8.00
0115	EUROPEAN VIDEO EXPRESS VOL. 4 VHS	P	37.95	1727	STREET LAMP	(P) H	8.95
0116	EUROPEAN VIDEO EXPRESS VOL. 5 VHS	P	37.95	1728	ARC LAMP W/LATTICE MAST	(P) H	10.75
0117	EUROPEAN VIDEO EXPRESS VOL. 6 VHS	P	37.95	1729	LIGHTING KITS	(P) H	7.75
0118	RAILWAYS OF SOUTHERN GERMANY VHS	P	46.95	1730	RAILROAD WORKERS	(P) H	6.75
0119	EUROPEAN VIDEO EXPRESS VOL. 8 VHS	P	37.95	1731	SIX PASSENGERS	(P) H	6.75
0120	BAVARIAN CAB RIDE VHS	P	37.95	1732	ANIMALS	(P) H	6.75
0121	THE ORIENT EXPRESS VHS	P	33.50	1733	CASES, BARRELS, ACCESSORIES	(P) H	3.75
0209	M TRACK STENCIL	H	19.50	1734	HALF-TIMBERED HOUSE	(P) H	7.50
0210	K TRACK STENCIL	H	19.50	1735	WATER TOWER	(P) H	8.95
0211	K/M CATENARY STENCIL	H	18.50	1736	PEDESTRIAN OVERPASS	(P) H	3.50
0212	Z TRACK STENCIL	H	19.50	1737	TUNNEL	(P) H	12.95
0225	COACH INTERIOR	H	10.50	1738	TUNNEL	(P) H	8.95
0226	SEATED PASSENGERS PK/10	H	9.95	1740	TWELVE PINE TREES	(P) H	12.95
0230	M TRACK PLANNING GAME	H	27.00	1741	SIX PINE TREES	(P) H	10.95
0231	K TRACK PLANNING GAME	H	27.00	1743	GAS LIGHT	(P) H	8.95
0232	Z TRACK PLANNING GAME	Z	27.00	1744	FOUR TREES	(P) H	12.95
0241	SMOKE FLUID 1.15 OZ PK/5	S	9.85	1745	FOUR TREES	(P) H	13.95
0248	SOLDER	S	26.65	1747	HALF-TIMBERED HOUSE	(P) H	14.00
0292A	REVISED "0292" Z TRK. PLANNING BOOK	Z	12.95	1747A	SCENIC MATERIAL	(P) H	3.95
0295	Z TRACK PLAN BOOK	Z	21.00	1748	GRASS MAT	(P) H	8.50
0303	DIGITAL BOOK ENGLISH TEXT	D	19.95	1750	STATION	(P) H	11.50
0322	Z/MINI CLUB BOOK GERMAN TEXT	Z	34.00	1751	YARD TOWER	(P) H	6.75
0323	MARKLIN 1 GAUGE HANDBOOK	1	57.00	1752	MODERN RAILWAY STATION	(P) H	13.95
0324	1 GAUGE BOOK GERMAN TEXT	(D) 1	33.50	1753	PASSENGER PLATFORM	(P) H	6.75
0327	MARKLIN RR&SCENERY GERM TEXT	H	34.00	1754	YARD TOWER	(P) H	4.50
0328	ADVANCED MARKLIN RR GERM. TEXT	H	34.00	1755	TOWER MAST LAMP	(P) H	11.95
0342	M SIGNAL MANUAL	H	9.95	1756	STATION	(P) H	18.00
0356	CROCODILE BOOK-GERMAN TEXT	P	29.95	1757	YARD TOWER	(P) H	9.50
0368	K SIGNAL MANUAL	H	13.85	1758	TRAIN SHED	(P) H	12.00
0403	BRIEFCASE LAYOUT	Z	789.00	1759	TUNNEL PORTAL (2 PIECES)	(P) H	4.95
0406	EUROPEAN STYLE Z LAYOUT 28X21	Z	1085.00	1760A	RAILWAY STATION	(P) H	6.50
0408	WINTER SCENE LAYOUT	Z	795.00	1761	SINGLE HOUSE	(P) H	10.75
0428	RHEINGOLD POSTER	P	5.95	1761A	ENGINE HOUSE	(P) H	7.95
0501	HO "WALDENBURG" LAYOUT (47"X3'3")	P	1995.00	1762	ARCH BRIDGE	(P) H	3.95
0509	US STYLE Z LAYOUT 28 X 21	Z	759.00	1763	TRUSS BRIDGE	(P) H	3.95
0702	K/M TRACK PLAN BOOK	H	34.00	1764	CURVED BRIDGE	(P) H	3.95
0712	M-TRCK PLAN BOOK-BEGINNER	H	19.95	1765	BRIDGE PILLARS	(P) H	3.95
0716	HO ELECTRICAL MANUAL	H	31.50	1766	GROUND COVER	(P) H	7.50
0722	K-TRCK PLAN BOOK-BEGINNER	H	19.95	1767	FOUR SCENERY MOTIFS	(P) H	15.75
0733	MARKLIN HO SERVICE MANUAL	H	14.50	1769	GRAVEL LOADER	(P) H	7.95
1004	BASIC CONSTRUCTION SET M30	M	98.50	1770	PALACE	(P) H	11.95
1005	BASIC CONSTRUCTION SET M50	M	137.00	1771	WATER MILL	(P) H	6.50
1006	BASIC CONSTRUCTION SET M60	M	225.00	1772	BUNGALOW	(P) H	3.95
1007	ROBOTICS CONSTRUCTION SET	M	435.00	1773	SMALL HOUSE	(P) H	3.95
1008	SOLAR CONSTRUCTION SET	M	169.00	1774	ENGINE HOUSE-2 STALLS	(P) H	14.50
1016	EXTENSION SET E30	M	69.00	1775	CHURCH	(P) H	9.50
1017	EXTENSION SET E50	M	108.00	1776	GAS STATION	(P) H	5.95
1018	METALL AC/DC MOTOR	M	56.00	1777	INN	(P) H	6.95
1030	TRACTOR GIFT SET	M	36.00	1778	CABLE CAR SET	(P) H	17.95
1034	MOTOR CYCLE-GIFT PACKAGE	M	36.00	1779	ROW HOUSES	(P) H	10.50
1031	TRACTOR W/TRAILER GIFT SET	M	58.00	1780	QUARRY BUILDINGS	(P) H	11.95
1033	CHOPPER GIFT SET	M	36.00	1781	COALING STATION	(P) H	8.50
1035	CABLE CAR-GIFT PACKAGE	M	44.50	1782	BUNGALOW	(P) H	6.75
1037	HELICOPTER-GIFT PACKAGE	M	34.00	1783	LINESIDE ACCESSORY KIT	(P) H	5.50
1040	EXPANSION SET 'NUTS & BOLTS'	M	16.00	1784	GARDEN FENCE	(P) H	5.60
1041	EXPANSION SET 'FLAT GIRDERS'	M	23.00	1785	CEMENT TRUCK	(P) H	9.50
1042	EXPANSION SET 'ANGLE GIRDERS'	M	35.00	1786	TRAIN WASHING FACILITY	(P) H	5.50
1043	EXPANSION SET 'PLATES'	M	25.00	1787	LINESIDE WORKER'S HOUSE	(G) H	6.50
1044	EXPANSION SET 'TIRES W/RIMS'	M	28.00	1788	EIGHT VEHICLES	(P) H	9.95
1045	EXPANSION SET 'GEARS'	M	34.00	1791	NURSERY BUILDINGS	(P) H	5.50
1047	EXPANSION SET 'CHAIN GEARS'	M	29.95	1792	COTTAGE & BARN	(P) H	5.60
1073	MOTOR WITH GEARBOX	M	72.00	1794	SCENIC MATERIALS	(P) H	14.95
1075	ANNIVERSARY CONSTRUCTION SET	(L) M	219.00	1795	WIND MILL	(P) H	9.50
1077	MARKLIN TRAC THEME SET	M	120.00	1796	SIX FLOWERING BUSHES	(P) H	9.95
1084	METALL GO-KART SET	M	142.00	1797	CHAPEL	(P) H	8.75
1689	CASTLE	(P) H	21.00	1798	DAIRY BARN	(P) H	5.95
1690	TRAIN STATION	(P) H	13.50	1799	SIX TREES	(P) H	14.95
1691	SIGNAL TOWER	(P) H	6.50	1892	FARM MACHINERY SET	(P) H	79.00
1692	STATION PLATFORM	(P) H	9.75	1894	DELIVERY TRUCK SET	(P) H	79.00
1693	POST OFFICE	(P) H	12.95	1895	STEAM ROLLER	(P) H	120.00
1694	CHALET	(P) H	9.95	1896	LOCOMOBILE	(L) H	99.00
1695	RURAL HOTEL	(P) H	16.50	1897	LOCOMOBILE	(L) H	99.00
1696	TRACK SCALE	(P) H	11.50	1899	OLDTIMER TRUCK SET	H	68.50
1697	WATER TOWER	(P) H	14.50	2001	ALPHA TRCK 7-1/8" STRT PK/6	A	17.00
1698	DRIVE-UP DINER	(P) H	11.50	2006	ALPHA STRT TRK BRIDGE SET	A	29.00
1699	MERRY-GO-ROUND MOTORIZED	(P) H	25.95	2019	ALPHA TRACK BUMPER	A	7.50
1700	HIGHWAY MATERIAL	(P) H	17.50	2021	ALPHA TRK 14-1/8" R30 PK/6	A	17.00

Märklin, Inc. P.O. Box 51319, 16988 W. Victor Road, New Berlin, WI 53151-0319 1-414-784-8854

American Subsidiary of Gebr., Märklin & Cie, GmbH, West Germany and Exclusive Distributor in North America for Märklin Products

ITEM #	DESCRIPTION	SCALE	PRICE	ITEM #	DESCRIPTION	SCALE	PRICE
2026	ALPHA CURV TRK BRIDGE SET	A	29.00	† 2630	PASSENGER DEPOT	Z	11.50
2031	ALPHA TRK 17-1/8" R30 PK/6	A	19.95	† 2631	2-STORY RESIDENCE	Z	9.50
2062	ALPHA TRK TURNOUT LFT MANUAL	A	18.50	† 2632	FACTORY	Z	13.00
2063	ALPHA TRK TURNOUT RGHT MANUAL	A	18.50	† 2633	FEED MILL	Z	12.50
2090	ALPHA FEEDER TRACK	A	8.95	† 2634	FREIGHT TERMINAL	Z	15.00
2091	A-ADAPTER TRCK-M TRCK 7 1/8	A	6.00	† 2635	MINE HEAD	Z	14.00
2200	K TRK 7-1/8" STRAIGHT PK/10	H	2.95/pc.	† 2637	COUNTRY CHURCH	Z	12.00
2201	K TRK 3-9/16" STRAIGHT PK/10	H	2.85/pc.	† 2638	RANCH HOUSE	Z	9.50
2202	K TRK 1-3/4" STRAIGHT PK/10	H	2.80/pc.	† 2639	BARN	Z	10.00
2203	K TRACK 1-3/16" STRAIGHT PK/10	H	2.75/pc.	† 2640	STORE FRONTS	Z	11.00
2204	K TRK 7/8" STRAIGHT PK/10	H	2.65/pc.	2662	DIGITAL DEMO TRAIN SET	(L)(D) H	455.00
2205	K TRACK 35-1/2" FLEX. PK/10	H	13.00/pc.	2664A	DGTL DB EXPRESS TRAIN	H	460.00
2206	K TRK 6-5/8" STRAIGHT PK/10	H	2.95/pc.	2665	DIGITAL DRG EXPRESS TRAIN	(L)(D) H	565.00
2207	K TRK 6-1/8" STRAIGHT PK/10	H	2.95/pc.	2670	MARKLIN PEN	P	1.25
2208	K TRK 1-3/8" STRAIGHT PK/10	H	2.65/pc.	2675	USERS GUIDE TO DIGITAL SYSTEM	D	15.95
2209	K TRK 8-5/8" STRAIGHT PK/10	H	3.60/pc.	2676A	SIG NEWSLETTERS VOL. 1 (89)	D	10.00
2210	K TRK 11-5/8" R.45 PK/10	H	3.70/pc.	2677A	SIG NEWSLETTERS VOL. 2 (90)	D	10.00
2221	K TRK 14-1/8" R.30 PK/10	H	2.95/pc.	2690	DGTL DBP TRAIN SET	(D)(L) D	355.00
2223	K TRK 14-1/8" R.15 PK/10	H	2.85/pc.	2702	20TH ANNIVERSARY SET	(L)(P)(D) H	289.00
2224	K TRK 14-1/8" R.7.5 PK/10	H	2.65/pc.	2704	STEEL MILL TRAIN	(D)(L)(P) H	210.00
2229	K TRK CURVED CIRCUIT TRK 15	H	13.00	2750	PASSENGER TRAIN SET	(P)(L)(D) H	159.00
2231	K TRK 16-3/4" R.30 PK/10	H	3.40/pc.	* 2847	SWISS FREIGHT TRAIN	(E) H	275.00
2232	K TRK 16-3/4" R.22 30 PK/10	H	3.25/pc.	2861	DB SUGAR BEET TRAIN	(D) H	275.00
2233	K TRK 16-3/4" R.15 PK/10	H	2.95/pc.	2862	DB DEMONSTRATION TRAIN	(L)(D) H	410.00
2234	K TRK 16-3/4" R.7 30 PK/10	H	2.85/pc.	2863	VOLKSWAGEN AUTO. TRANS-TRAIN	(L)(D) H	350.00
2235	K TRK 16-3/4" R.7 45 PK/10	H	2.80/pc.	2864	DB EPOCH III EXPRESS TRAIN	H	429.00
2239	K TRK CURVED CIRCUIT TRK. 15	H	13.00	2865	DRG EXPRESS TRAIN	(L)(D) H	525.00
2241	K TRK 21-3/4" R.30 PK/10	H	4.45/pc.	2907	SM FREIGHT STARTER SET	H	169.00
2251	K TRK 24-3/4" R.30 PK/10	H	4.45/pc.	2967A	LARGE FREIGHT STARTER SET	H	285.00
2257	K TRK CROSSING 14 26'	H	29.95	2987	DELUXE FRT STARTER SET W/K-TRK	H	299.00
2258	K TRK CROSSING 45	H	17.50	3000	DB CL 89 0-6-0T LOCOMOTIVE	H	89.00
2259	K TRK CROSSING 22 30'	H	18.50	* 3001	DB CL 163 ELECTRIC LOCOMOTIVE	(HOB) H	155.00
2260	K TRK DOUBLE SLIP REMOTE	H	61.50	3002	DB CL E63 ELECTRIC LOCO	(P) H	129.00
2261	K TRK TURNOUT R&L REMOTE	H	74.50	3003	DB CL 24 2-6-0 LOCO W/TENDER	H	149.00
2262	K TRK TURNOUT LEFT REM. PK/2	H	74.50	3006	GERMAN POSTAL DIESEL LOCO	(P) H	149.00
2263	K TRK TURNOUT RIGHT REM PK/2	H	74.50	3012	CHIEMGAU RAILBUS SET	(P) H	179.00
2264	K TRK TURNOUT R & L MANUAL	H	35.50	3016	DB CL 795 RAILBUS	H	119.00
2265	K TRK TURNOUT LEFT MAN. PK/2	H	35.50	3017	BERLIN S-BAHN SET	(P) H	218.00
2266	K TRK TURNOUT RIGHT MAN. PK/2	H	35.50	3018	CL VT88/VB88 RAILBUS SET	(D)(P) H	99.00
2267	K TRK TURN CURVED R & L REM.	H	74.50	3019	DB CL 218 DIESEL LOCO	(P) H	150.00
2270	K TRK TURNOUT 3-WAY REM.	H	64.50	3032	DB CL 81 0-8-0T LOCO	H	165.00
2271	K TRK TURN. 35.6" R. R&L MAN.	H	46.75	* 3034	DB CL 141 ELECTRIC LOCOMOTIVE	(HOB) H	189.00
2272	K TRK TURN. 35.6" R. LEFT PK/2	H	46.75	* 3037	DB CL 141 ELECTRIC LOCOMOTIVE	(HOB) H	189.00
2273	K TRK TURN 35.6" R. RIGHT PK/2	H	46.75	3049	DB CL 104 ELECTRIC LOCO	H	218.00
2274	K TRK 35.6" R. 14 26' PK/10	H	3.65/pc.	3053	DB CL 103 ELECTRIC LOCO	H	235.00
2275	K TRK DOUBLE SLIP MANUAL	H	47.50	3058	DB CL 151 ELECTRIC LOCO	(D) H	225.00
2290	K TRK 7-1/8" STR FEEDER	H	7.50	3060	SANTA FE F7 DIESEL LOCO	H	150.00
2291	K TRK ADAPTER 7-1/8" STR 2/PK	H	6.90	3065	DB CL 260 DIESEL LOCO W/TELEX	H	172.00
2292	K TRK 7-1/8" STR FEED W/CAP	H	9.85	3072	DB CL 212 DIESEL LOCO	H	162.00
2293	K TRK 1-5/8" STRAIGHT PK/10	H	2.80/pc	3074	DB CL 216 DIESEL LOCO	H	162.00
2295	K TRK CONTACT TRACK SET	H	17.00	3078	HENSCHEL DHG 500 DIESEL LOCO	H	99.00
2297	K TRK 3/9/16" UNCOUPLER	H	23.00	3082	DB CL 41 2-8-2 LOCO W/TENDER	H	250.00
2299	K TRK STRAIGHT CIRCUIT TRACK	H	13.00	3084	DB CL 050 2-10-0 LOCO W/TENDER	H	295.00
2401M	MILLER HIGH LIFE I	(L) Z	25.00	3085	DB CL 003 4-6-2 LOCO W/TENDER	H	255.00
2402M	MILLER GENUINE DRAFT	(L) Z	25.00	3087	GERMAN 0-6-0T LOCOMOTIVE	H	80.00
2403M	MILLER LITE	(L) Z	28.00	3088	HENSCHEL DHG 700CDIESEL LOCO	H	119.00
2404M	MILLER HIGH LIFE (LADY)	(L) Z	28.00	3095	DB CL 74 2-6-0T LOCOMOTIVE	H	136.00
2507	ALPHA STARTER SET	A	169.00	3096	DB CL 86 2-8-2T LOCO W/TELEX	H	256.00
2510A	89 INT'L SERIES - SWITZERLAND	Z	24.50	3099	DB CL 038 4-6-0 LOCO W/TENDER	H	195.00
2511	ALPHA 'RADAR' EXTENSION SET	A	138.00	3106	DB CL 78 4-6-4T LOCOMOTIVE	(D) H	245.00
2512	ALPHA 'CRANE' EXTENSION SET	A	159.00	3109	KPEV CL T 18 4-6-4T LOCO	(D) H	260.00
2514A	89 INT'L SERIES - NETHERLANDS	Z	24.50	* 3123	SNCF MICHELINE RAILBUS	(E) H	369.00
2515	ALPHA MACHINES MULTIFUNCTION CAR	A	42.00	3124	SNCF MICHELINE RAILBUS	(E) H	299.00
2516A	89 INT'L SERIES - CANADA	Z	24.50	3125	SBB CL RBe 2/4 RAILCAR	(D) H	325.00
2517	ALPHA LOW SIDE CAR	A	32.00	* 3128	BERLIN S-BAHN SET	(HOB) H	239.00
* 2518	ALPHA TRAVELLER A	A	34.95	3131	DB CL 361 DIESEL LOCO W/TLX	H	180.00
* 2519	ALPHA TRAVELLER F	A	34.95	3132	SJ DIESEL SWITCHER	(E) H	125.00
* 2530	ALPHA LOCO. A	A	169.00	3133	SNCB CL 54 DIESEL LOCO	H	205.00
2550A	90 INT'L SERIES - JAPAN	H	39.95	3137	NSB DIESEL LOCO.	(E) H	232.00
2551A	89 INT'L SERIES - GREAT BRITAIN	H	39.95	3140	AUSTRIAN RAILBUS SET	(E)(D) H	169.00
2552A	90 INT'L SERIES - SWEDEN	H	39.95	3141	DB CL 260 DIESEL LOCO	H	155.00
2553A	89 INT'L SERIES - AUSTRIA	H	39.95	3142	FS CL D236 DIESEL LOCO	(L)(D) H	147.00
2556A	89 INT'L SERIES - CANADA	H	39.95	3146	DB CL 236 DIESEL LOCO	(D) H	150.00
* 2561	ALPHA BIG RIG	A	32.95	3153	DB CL 120 ELECTRIC LOCO	H	236.00
* 2562	ALPHA JUMBO	A	35.50	3156	DB CL 140 ELECTRIC LOCO	(D) H	195.00
* 2564	ALPHA RACING	A	38.50	3157	DB CL 160 ELECTRIC LOCO	H	199.00
* 2565	ALPHA POWER UNIT	A	32.95	3160	OBBL CL 1043 ELECTRIC LOCO	H	215.00
* 2566	ALPHA SPACE JET	A	22.00	3162	FS CL E 424 ELECTRIC LOCO	H	225.00
* 2581	ALPHA EXPLORER	A	27.95	* 3174	DSB CL MY DIESEL LOCOMOTIVE	(E) H	345.00
* 2582	ALPHA SCHUTTLE	A	55.00	3181	BURLINGTON NORTHERN F7 DIESEL	H	159.00
* 2583	ALPHA POWER TRUCK	A	43.95	3182	CIRCUS LOCO 0-6-0	(D)(L)(P) H	78.00
2600	MARKLIN MAGAZINE SUBSCRIPTION	P	6.00	3185	BAVARIAN MOUNTAIN TRAIN	(D)(L) H	239.00
2601	DIGITAL STARTER SET	(D) D	965.00	3186	DB CL 141 ELECTRIC LOCO	(P) H	166.00
2604	DIGITAL TURNOUTS R&L	D	135.00	3187	DRG CL EP 2 ELEC LOCO	(P) H	166.00
2611A	Z WINTER LAYOUT BOARD 13'X19'	Z	165.00	3188	DB CL 103 ELECTRIC LOCO	(P) H	235.00
2612	BACK ISSUE MARKLIN MAGAZINE	P	6.00	3189	HENSCHEL DHG 500 DIESEL	(P) H	99.00
2612A	DIGITAL STARTER SET	H	749.00	3190	DB CL 80 0-6-0T LOCOMOTIVE	(P) H	88.00
2613	MARKLIN HO COLLECTIBLE BOOK	H	35.00	3192	DB CL 32 ELECTRIC LOCO	(D)(P) H	165.00
2622A	BASIC DIGITAL SET	H	599.00	3196	DB CL 81 0-8-0T LOCOMOTIVE	(P) H	148.00
2623	MARKLIN Z LAYOUT BOOK (SOFTBOUND)	Z	14.95	3304	DB CL 80 0-6-0T LOCOMOTIVE	H	239.00
2623A	"2623" (HARDBOUND)	Z	24.95	* 3305	KPEV CL T 18 4-6-4T STEAM LOCO	H	298.00
2627	DIGITAL SET 2-RAIL DC HO	D	795.00	* 3306	DB CL 78 4-6-4T STEAM LOCO	H	289.00

ITEM #	DESCRIPTION	SCALE	PRICE	ITEM #	DESCRIPTION	SCALE	PRICE
3307	K.W.ST.E. CL T18 4-6-4T LOCO	H	289.00	3676	DGTL DB CL 628.2 RAILCAR	H	465.00
3308	DRG CL 85 2-10-2T LOCOMOTIVE	H	339.00	3680	DGTL DB CL 323 DIESEL LOCO	H	339.00
3309	DB CL 85 2-10-2T LOCO W/TELEX	H	375.00	3681	DGTL DB CL 221 DIESEL LOCO	D	395.00
3310	DB CL 012 4-6-2 LOCO W/TENDER	H	339.00	3684	DGTL DB CL 050 2-10-0 LOCO	H	345.00
3311	K.W.ST.E. CL C 4-6-2 LOCO	H	649.00	3687	DGTL DB CL 98.3 0-4-0T STEAM LOCO	H	359.00
3313	DB 2-6-2 TANK LOCO.	(E) H	259.00	3688	DGTL HENSCHHEL DHG 700 C LOCO	H	165.00
3315	DB CL 50 2-10-0 LOCO W/TENDR	H	329.00	3690	DGTL DB CL 01.10 4-6-2 STEAM LOCO W/TENDER	H	449.00
3317	SNCF CL 231 A STEAM LOCOMOTIVE	(E) H	329.00	3696	DGTL DB CL 86 2-8-2T W/TELEX	H	315.00
3318	DRG CL 18.4 4-6-2 LOCO W/TEN	H	269.00	3704	DGTL DB CL 80 0-16-0T LOCO	D	349.00
3322	DB CL 194 ELECTRIC LOCO	H	279.00	3790	DGTL DB CL 1.10 4-6-2 LOCO	D	485.00
3323	ELECTRIC LOCO CL Re 4/4 SWISS	(D) H	233.00	4009	DB EXPRESS BAGGAGE CAR	(P) H	34.00
3324	NS CL 1100 ELECTRIC LOCO	H	229.00	4010	DB SLEEPING CAR	(P) H	34.00
3326	NS CL 1600 ELECTRIC LOCO	H	315.00	4012	DB 2ND CL INTERREGIO COACH	(P) H	34.00
3327	NS CL 1100 ELECTRIC LOCO	H	226.00	4013	DB 1ST CL IC COACH	(P) H	34.00
3329	DB CL 191 ELECTRIC LOCO	H	425.00	4018	DB CL 995 RAILBUS TRAILER	H	43.50
3330	SBB CL Re 4/4 ELECT LOCO	H	262.00	4019	S-BAHN TRAILER	(P) H	44.50
3334	SNCF CL BB 26000 ELECTRIC LOCO	H	395.00	4020	GERMAN 2ND CL LOCAL COACH	(P) H	11.00
3336	SBB CL Ae 6/6 ELECTRIC LOCO	(L) H	445.00	4021	GERMAN MAIL CAR	(P) H	14.50
3338	SBB CL Ae 6/6 ELECTRIC LOCO	(L) H	445.00	4026	DB EXPRESS BAGGAGE CAR	H	35.75
3340	DB CL 110 ELECTRIC LOCOMOTIVE	H	269.00	4039	DB COACH	(HOB) H	18.00
3342	DB CL 111 ELECTRIC LOCOMOTIVE	H	245.00	4040	GERMAN 2ND CL LOCAL COACH	H	11.00
3343	DB CL 151 ELECTRIC LOCOMOTIVE	H	275.00	4044	DB EXPRESS BAGGAGE CAR	H	36.00
3344	DB CL 110 ELECTRIC LOCOMOTIVE	H	239.00	4051	DB 1ST CL EXPRESS COACH	H	36.00
3345	DB CL 140 ELECTRIC LOCOMOTIVE	H	239.00	4052	DB 2ND CL EXPRESS COACH	H	36.00
3347	DB CL 212 DIESEL LOCO	H	189.00	4053	4051 W/MARKER LIGHTS	H	58.00
3348	DB CL 120 ELECTRIC LOCOMOTIVE	H	298.00	4054	DB DINING CAR	H	32.00
3351	SBB CL Ae 3/6 ELECT LOCO	H	275.00	4055	DB IC 1ST CLASS COACH	(HOB) H	38.00
3352	SBB CL Ce 6/8 ELECT LOCO	H	435.00	4057	DB IC DINING CAR	(HOB) H	38.00
3353	DB CL 120.1 ELECTRIC LOCO	H	255.00	4060	SANTA FE F7 NON-POWERED	H	87.00
3355	DB CL 111 ELECTRIC LOCO	H	235.00	4064	DB SLEEPING CAR	H	36.00
3357	DB CL 103 ELECTRIC LOCO	H	249.00	4066	SBB 1ST CL EXPRESS COACH	H	36.00
3358	DB CL 103 ELECTRIC LOCO	H	259.00	4067	DB 1ST/2ND CL LOCAL COACH	H	32.00
3360	DB CL 111 ELECTRIC LOCO	H	235.00	4079	DB 2ND CL LOCAL COACH	H	32.00
3361	DB CL 151 ELECTRIC LOCOMOTIVE	H	259.00	4080	DB 2ND CL COACH W/BAGGAGE AREA	H	32.00
3363	SNCB CL 16 ELECTRIC LOCO	H	259.00	4084	DB AUTO CARRIER	H	36.00
3366	DB CL 152 ELECTRIC LOCO	H	299.00	4085	DB TEE/IC 1ST CL COACH	H	36.00
3371	DB ICE TRAIN SET	H	799.00	4087	DB TEE/IC DINING CAR	H	36.00
3372	DB CL 212 DIESEL LOCOMOTIVE	H	198.00	4089	4085 W/MARKER LIGHTS	H	58.00
3373	DB CL 216 DIESEL LOCOMOTIVE	H	235.00	4090	DB TEE VISTA DOME CAR	H	49.50
3374	DB CL 216 DIESEL LOCOMOTIVE	H	198.00	4098	DB TEE EXPRESS COACH	H	65.00
3375	DB CL 216 DIESEL LOCOMOTIVE	H	198.00	4100	DB 1ST/2ND CL LOCAL COACH	H	32.00
3376	DB CL 628.2 DIESEL RAILCAR	H	396.00	4101	DB 2ND CL LOCAL COACH	H	32.00
3377	DB CL 212 DIESEL LOCOMOTIVE	H	198.00	4102	DB LOCAL BAGGAGE CAR	H	37.50
3387	DB CL 98.3 0-4-0 T LOCO	H	285.00	4103	4102 W/MARKER LIGHTS	H	59.50
3386	NS PTT POSTAL RAILCAR	(E) H	395.00	4107	GERMAN LOCAL COACH	H	23.75
3388	NS PTT POSTAL RAILCAR	(E) H	315.00	4108	GERMAN LOCAL BAGGAGE CAR	H	23.75
3390	DB CL 01.10 4-6-2 STEAM LOCO W/TENDER	H	398.00	4111	DB 1ST CL EXPRESS COACH	H	36.00
3502	**** DRG BORSIG2-6-8-0 LOCO	(L) H	495.00	4112	DB 2ND CL EXPRESS COACH	H	36.00
3504	**** DB CL 80 0-6-0T LOCO	H	295.00	4113	SNCB 2ND/3RD CL COACH	(E) H	29.75
3511	**** K.W.ST.E. CL C 4-6-2 LOCO	H	685.00	4114	SNCB 2ND CL COACH	(E) H	29.75
3514	**** K.W.ST.E. CL C 4-6-2 LOCO	H	685.00	4115	SNCB LOCAL BAGGAGE CAR	(E) H	34.50
3518	**** DRG CL 18.4 4-6-2 LOCO	H	325.00	4121	SHELL EXHIBITION COACH	(D) H	49.50
3526	**** NS CL 1600 ELECT LOCO	H	345.00	4126	CFL 1ST/2ND CL COACH	(E) H	47.00
3530	**** SBB CL RE 4/4 ELEC LOCO	H	325.00	4127	CFL 2ND CL COACH	(E) H	47.00
3546	**** DB CL 236 DIESEL LOCO	H	225.00	4130	DB TEN SLEEPING CAR	H	36.00
3553	**** DB CL 120.1 ELEC LOCO	H	309.00	4131	DB 1ST/2ND CL LOCAL COACH	H	52.50
3556	**** SBB CL CE 6/8 ELEC LOCO	H	479.00	4132	DB 2ND CL LOCAL COACH	H	52.50
3558	**** DB CL 103 ELECTRIC LOCO	H	320.00	4133	DB 2ND CL COACH W/BAGGAGE AREA	H	52.50
3576	**** DB CL 628.2 RAILCAR	H	465.00	4138	SBB 3RD CL EXPRESS COACH	(D) H	42.50
3581	**** DB CL 221 DIESEL LOCO	H	395.00	4153	DB TEE/IC DINING CAR	(D) H	63.75
3603	DGTL SNCB MICHELIN RAILBUS	(E) H	385.00	4155	OBV TEN SLEEPING CAR	(E) H	43.50
3604	DGTL DB CL 80 0-6-0T LOCO	H	295.00	4156	SNCF 1ST CL EXPRESS COACH	(E) H	42.50
3605	DGTL SBB CL RBe 2/4 RAILCAR	H	389.00	4171	DB ICE COACH	H	112.00
3607	DGTL K.W.ST.E. CL T 18 LOCO	H	320.00	4181	BURL.NORTHERN F7 NON-POWERED	H	96.00
3608	DGTL NS PTT POSTAL RAILCAR	(E) H	399.00	4182	SBB TEN SLEEPING CAR	H	46.00
3609	DGTL KPEV CL T18 4-6-4T LOCO	H	320.00	4183	DB 1ST/2ND CL S-BAHN COACH	H	57.00
3610	DGTL DB CL 012 4-6-2 LOCO	H	385.00	4184	DB 2ND CL S-BAHN COACH	H	57.00
3611	DGTL K.W.ST.E. CL C4-6-2 LOCO	H	685.00	4185	DB 2ND CL S-BAHN CAB COACH	H	96.00
3614	DGTL K.W.ST.E. CL C 4-6-2 LOCO	D	685.00	4186	OLD TIMER BAGGAGE CAR	(P) H	38.50
3615	DGTL DB CL 50 2-10-0 LOCO	H	355.00	4187	S-BAHN TRAILER	(HOB) H	49.00
3618	DGTL DRG CL 18.4 4-6-2 LOCO	H	320.00	4188	DB DINING CAR	H	36.00
3624	DGTL SNCF MICHELIN RAILBUS	(E) H	385.00	4189	FS 2ND CL EXPRESS COACH	H	47.50
3629	DGTL DB CL 191 ELECTRIC LOCO	H	475.00	4192	DB 1ST CL EXPRESS COACH	(P) H	34.00
3630	DGTL SWISS ELECTRIC LOCO	H	320.00	4193	DB 2ND CL EXPRESS COACH	(P) H	34.00
3631	DGTL DB CL 361 LOCO W/TELEX	H	239.00	4197	DB 1ST CL EXPRESS COACH	(P) H	34.00
3634	DGTL SNCF CL BB 26000 ELECT. LOCO	H	435.00	4198	DB 2ND CL EXPRESS COACH	(P) H	34.00
3636	DGTL SBB CL Ae 6/6 ELECT. LOCO	(L) H	479.00	4199	K. BAY. STS. B. 3RD CL COACH	(P) H	34.00
3638	DGTL SBB CL Ae 6/6 ELECT. LOCO	(L) H	479.00	4200	DB 1ST CL COMPARTMENT CAR	H	40.00
3642	DGTL DB CL 111 ELECTRIC LOCO	H	265.00	4201	DB 2ND CL COMPT CAR W/BRK CAB	H	49.00
3647	DGTL DB CL 212 DIESEL LOCO	H	239.00	4202	DB 2ND CL COMPARTMENT CAR	H	40.00
3649	DGTL EMD F-7 DIESEL LOCO SET	(D)(L) D	599.00	4203	DB 2ND CL COMPARTMENT CAR	H	44.50
3652	DGTL SBB CL Ce 6/8 ELECT LOCO	H	485.00	4206	KPEV 1ST CL COMPARTMENT CAR	H	57.00
3653	DGTL DB CL 120 ELECTRIC LOCO	H	285.00	4207	KPEV 2ND CL DBL COMPARTMNT CAR	H	89.00
3654	DGTL DB CL 120.1 ELEC LOCO	H	310.00	4208	KPEV 3RD CL DBL COMPARTMNT CAR	H	96.00
3655	DGTL DB CL 111 ELECTRIC LOCO	H	289.00	4209	KPEV 3RD CL DBL COMPARTMNT CAR	H	104.00
3656	DGTL SBB CL Ce 6/8 ELEC LOCO	H	485.00	4210	K.W.ST.E. 2ND/3RD CL COACH	H	79.00
3657	DGTL DB CL 103 ELECTRIC LOCO	H	295.00	4211	K.W.ST.E. 2ND CL COACH	H	79.00
3658	DGTL DB CL 103 ELECTRIC LOCO	H	325.00	4212	K.W.ST.E. BAGGAGE CAR	H	64.50
3660	DGTL DB CL 111 ELECTRIC LOCO	H	289.00	4213	K.W.ST.E. 3RD CL COACH	H	79.00
3665	DGTL DB CL 260 LOCO W/TELEX	H	235.00	4214	K.W.ST.E. 4TH CL COACH	H	79.00
3672	DGTL DB CL 212 DIESEL LOCO	H	229.00	4215	SBB 1ST CL EXPRESS COACH	H	55.00
3674	DGTL DB CL 216 DIESEL LOCO	H	229.00	4216	SBB 2ND CL EXPRESS COACH	H	55.00

ITEM #	DESCRIPTION	SCALE	PRICE	ITEM #	DESCRIPTION	SCALE	PRICE
4217	SBB DINING CAR	H	75.00	4473	DB LOW SIDED GONDOLA	H	21.00
4218	BLS 1ST CL EXPRESS COACH	(D) H	59.00	4474	4473 W/BULLDOZER & LOADER	H	32.50
4219	BLS 2ND CL EXPRESS COACH	(D) H	59.00	4475	4473 W/TARP	H	24.50
4224	DB IC 1ST CL EXPRESS COACH	H	52.50	4537	DB LOW SIDED GONDOLA	(D)(P) H	20.00
4225	DB IC 2ND CL EXPRESS COACH	H	52.50	4538	DB LOW SIDED GONDOLA	(P) H	10.50
4226	DB 1ST CL IC COACH	H	55.00	4541	PRIMEX CONTAINER CAR	(P) H	16.50
4227	DB 2ND CL IC COACH	H	55.00	4542	DB BOXCAR	(P) H	14.50
4228	DRG RHEINGOLD 5 CAR SET	H	589.00	4543	RITTER SPORT REFRIG CAR	(P) H	17.85
4229	K.W.ST.E. MAIL CAR	H	82.00	4549	CASTROL TANK CAR	(P) H	14.85
* 4232	DB SLUMBER COACH	H	55.00	4554	4537 W/PRIMEX TARP	(P) H	23.00
* 4233	DB AUTO CARRIER	H	79.00	4555	DB BALLAST CAR	(P) H	24.85
4234	DB AUTO CARRIER	H	62.00	4556	DB CRANE CAR	(P) H	36.95
* 4235	DB 2ND CLASS LOCAL COACH	H	35.00	4558	DB POSTAL BOXCAR	(P) H	14.50
4236	SBB 2ND CL KINDERGARTEN CAR	H	55.00	* 4573	CONTAINER CAR W/TRUCK	(P) H	56.00
* 4238	SBB 3RD CLASS EXPRESS COACH	H	49.00	4579	DB SHELL TANK CAR	(P) H	14.85
* 4239	SBB BAGGAGE CAR	H	49.00	4582	DB GONDOLA	(P) H	14.00
* 4240	DB TEN SLEEPING CAR	H	52.00	4583	DB DUMP CAR	(P) H	9.85
4242	NSB BAGGAGE CAR	H	47.50	4584	CIRCUS CAR 1 W/TRUCK	(L)(P)(D) H	39.00
* 4244	SNCF 1ST CL EXPRESS COACH	(E) H	52.00	4587	DB BP TANK CAR	(P) H	37.00
* 4245	SNCF 2ND CL EXPRESS COACH	(E) H	52.00	4588	DB BP STROMEYER TANK CAR	(P) H	37.00
* 4246	SNCF 3RD CL EXPRESS COACH	(E) H	52.00	4595	STAKE CAR DB	(P) H	14.60
4247	DB IC 1ST CL EXPRESS COACH	H	47.00	4598	DB DBL FLAT CAR W/LOAD	(P) H	29.95
4248	DB 1ST CL COACH	H	49.50	4599	DB EAOS GONDOLA	(P) H	23.50
4251	SNCB 1ST CL COACH	H	49.50	4610	DB BALLAST CAR	H	26.95
4252	SNCB 2ND CL COACH	H	49.50	4612	DB AUTO CARRIER	H	26.95
4253	SNCF 1ST CL CORAIL COACH	H	49.50	4613	DB AUTO CARRIER W/AUTOS	H	37.95
4255	DB 1ST/2ND CL COMMUTER COACH	H	54.50	4617	DB DEPR. CTR. FLAT CAR W/TRANS	H	39.95
4256	DB 2ND CL COMMUTER COACH	H	54.00	4618	DB DEPR. CTR. FLAT CAR W/CRATE	H	38.00
4257	DB 2ND CL COMMUTER CAB CAR	H	89.00	4619	DB GONDOLA W/SLIDING ROOF	H	24.00
4258	DB 1ST/2ND CL CITY BAHN CAR	H	54.00	4624	DB HOPPER CAR	H	33.75
4259	DB 2ND CL CITY BAHN CAR	H	54.00	4626	DB COVERED HOPPER CAR	H	36.50
4260	DB 2ND CL CITY BAHN CAB CAR	H	88.00	4631	DB SIDE DUMP CAR	H	34.50
4262	NS 1ST/2ND CL EXPRESS COACH	H	55.00	4633	DB BOXCAR W/SLIDING ROOF&WALLS	H	35.75
4263	NS 2ND CL EXPRESS COACH	H	55.00	4635	DB MULTI-SECTION DUMP CAR	H	36.00
4264	NS 1ST CL INTER-CITY COACH	(E) H	51.00	4643	DB ARAL TANK CAR	H	39.95
4265	NS 2ND CL INTER-CITY COACH	(E) H	51.00	4644	DB BP TANK CAR	H	24.00
4266	SBB 1ST CL IC COACH	H	49.50	4650	DB ESSO TANK CAR	H	39.95
4267	SBB 1ST CL EUROFIMA COACH	(E) H	46.50	4651	DB SHELL TANK CAR	H	39.95
* 4272	OBB 1ST CLASS COACH	H	55.00	4663	DB FLAT CAR W/STAKES	H	37.95
* 4273	OBB 2ND CLASS COACH	H	55.00	4664	DB TFG CONTAINER CAR	H	29.95
4274	SNCB SLUMBER COACH	H	49.50	4665	DB LUMBER CAR SET	H	32.00
4275	DB 1ST CL COACH	H	48.50	4671	DB CRANE CAR	H	37.95
4276	DB 2ND CL COACH	H	48.50	4675	K.W.ST.E. OLEX TANK CAR	(D) H	35.95
4277	DB 2ND CL COACH	H	48.50	4679	K.W.ST.E. BOXCAR	H	29.95
4278	DB BAGGAGE CAR	H	48.50	4682	DB SUDZUCKER MOLASSES TANK CAR	H	35.75
4279	DB MAIL CAR	(L) H	52.00	4683	K.W.ST.E. VINEGAR TANK CAR	(D) H	35.75
4280	DB MAIL CAR	(L) H	52.00	4684	GERMAN FLAT CAR/PIVOT CRADLE	H	29.95
4281	DB 1ST CL INTERREGIO COACH	H	47.00	4687	SBB TELESCOPING CAR	H	49.75
4282	DB 2ND CL INTERREGIO COACH	H	47.00	4689	SBB EAOS GONDOLA	H	27.85
4283	DB EXPRESS BAGGAGE CAR	H	52.00	4690	DB EAOS GONDOLA	H	27.85
* 4284	DB IC DINING CAR	H	72.00	4692	DB BOXCAR	H	29.95
* 4285	DB IC 1ST CLASS COACH	H	55.00	4693	DB TELESCOPING CAR	H	49.75
* 4286	DB IC 1ST CLASS COACH	H	55.00	4694	DRG FLAT CAR W/STAKES	H	29.95
* 4287	DB IC DINING CAR	H	55.00	4695	DRG BOXCAR W/BRAKE CAB	(D) H	31.00
4288	DB TEE/IC 1ST CL COACH	(P) H	34.00	4696	DRG GONDOLA W/BRAKE CAB	(D) H	26.85
4289	DB TEE/IC DINING CAR	(P) H	34.00	4697	DRG FLT CAR W/LD CRDL&BRK CAB	H	29.85
4291	DB 1ST CL EXPRESS COACH	H	47.00	4698	SBB BOXCAR W/BRAKEMANS CAB	H	27.50
4292	DB 2ND CL EXPRESS COACH	H	47.00	4699	DB FREIGHT BAGGAGE CAR	H	28.50
4293	DB EXPRESS BAGGAGE CAR	H	52.00	4700	DB BOXCAR	H	25.95
4294	DB TEE/IC DINING CAR	H	65.00	4700N	NOCH SIX TRUCK SET	Z	46.25
4295	DB TEE/IC 1ST CL COACH	H	47.00	4710	DB BOXCAR	H	25.95
4296	DB TEE/IC 1ST CL COACH	H	47.00	4712	DB DOUBLE AUTO CARRIER	H	65.00
4297	DB TEE/IC DINING CAR	H	49.50	4715	OBB EAOS GONDOLA	(E) H	28.00
4298	4295 W/MARKER LIGHTS	H	68.00	4716	SNCB EAOS GONDOLA	(E) H	28.00
4301	DB 2ND CL LOCAL COACH	H	74.00	4717	SNCF EAOS GONDOLA	(E) H	28.00
4302	DB 2ND CL LOCAL COACH	H	74.00	4718	SBB EAOS GONDOLA	(E) H	27.85
4303	DB MAIL/BAGGAGE CAR	H	74.00	4719	NS EAOS GONDOLA	(E) H	25.95
4400D	BONN ANNIVERSARY SET 6-CARS	H	159.00	4724	OBB HOPPER CAR	(E) H	34.00
4400F	AIRLINES OF THE WORLD 6-CARS	H		4726	DB GONDOLA W/HINGED ROOF	H	33.85
4400G	1991 ANNIVERSARY SET 3-CARS	H		* 4732	DB BOXCAR	H	29.00
4400H	WILDWEST/CIRCUS 3-CARS	H		* 4734	DB SLIDING WALL BOXCAR	H	32.50
4405	CFL BOXCAR	(E) H	13.50	* 4735	SBB SLIDING WALL BOXCAR	H	32.50
4410	DB BOXCAR	H	14.50	* 4736	DBP BOXCAR	H	34.00
4411	4410 W/MARKER LIGHTS	H	24.50	* 4740	DB DEPRESSED FLR FLATCAR F/TRUCK TRNSPT	H	69.00
4413	DB DUMP CAR	H	11.50	* 4741	DB DEPRESSED FLR FLATCAR F/TRUCK TRNSPT	H	56.00
4414	DB BANANA CAR	H	15.75	4748	DSB BP PRESSURIZED TANK CAR	H	41.00
4415	DB REFRIGERATOR CAR	H	14.50	4750	DEA TEXACO TANK CAR	H	27.85
4423	DB LOW SIDED GONDOLA	H	9.75	* 4758	DB BP TANK CAR	H	44.00
4424	4423 W/BULLDOZER	H	16.50	4759	SBB BULK CONTAINER CAR	H	28.50
4428	OVOMALTINE CAR	(L) H	14.75	4761	DB DYCKERHOFF BULK CONTNR CAR	H	26.85
4430	DB GONDOLA	H	12.50	4773	RAILBOX BOXCAR	H	37.50
4431	4430 W/COAL LOAD	H	14.00	4774	SOO LINE GONDOLA	H	26.95
4432	WINE BARREL CAR	H	24.50	4775	BURLINGTON NORTHERN CABOOSE	H	39.95
4436	DB DINKELACKER BEER CAR	H	15.75	4776	CONRAIL BOXCAR	H	37.50
4439	DB STUTT. HOFBRAU BEER CAR	H	16.00	4777	SANTA FE CABOOSE	H	39.95
4440	DB ARAL TANK CAR	H	18.50	4780	K.W.ST.E. CLUSS BEER CAR	H	35.00
4441	DB ESSO TANK CAR	H	18.50	4781	KPEV SAUGLINGS FURSORGE CAR	H	36.75
4442	DB SHELL TANK CAR	H	18.50	4782	K.W.ST.E. ESSLINGER BEER CAR	H	35.00
4445	DB VDF CONTAINER CAR	H	14.85	4789	GER FRT CAR ASSOC CAR SET	H	259.00
* 4459	DB STAKE CAR	(HOB) H	14.50	4795	K.W.ST.E. GONDOLA	H	21.00
4460	DB TILT ROOF BOXCAR	H	24.95	* 4870	DRG TANK CAR	H	38.00
4465	DB GONDOLA	H	12.50	* 4871	DRG TANK CAR	H	38.00

ITEM #	DESCRIPTION	SCALE	PRICE	ITEM #	DESCRIPTION	SCALE	PRICE
* 4880	DB BOXCAR	H	32.50	5618	COALING STATION KIT	1	135.00
* 4886	DB GONDOLA	H	28.50	5621	DIESEL FUELING STATION KIT	1	176.00
4998	DGTL DANCE CAR	H	412.00	* 5622	MARKER SIGNAL SET	1	22.50
5004	M TRK FEEDER WIRE	H	2.25	5625	TURNOUT MECHANISM FOR 5970/71	1	67.00
5022	M TRK INSULATOR PK/10	H	1.50	5630	SBB CATENARY MAST PK/2	1	88.00
5100	M TRK 14-1/8" R. 30 PK/10	H	2.55/pc.	5631	SBB CATENARY FEEDER MAST	1	63.75
5101	M TRK 14-1/8" R. 15 PK/10	H	2.50/pc.	5632	DB CATENARY MAST	1	44.00
5102	M TRK 14-1/8" R. 7 30' PK/10	H	2.25/pc.	5633	DB CATENARY FEEDER MAST	1	63.75
5103	M TRK FEEDER 14-1/8" R. 30	H	6.50	5635	CATENARY WIRE 26" PK/10	1	52.50
5106	M TRK 7-1/8" STRT. PK/10	H	2.55/pc.	5636	CATENARY WIRE 17" PK/10	1	52.00
5107	M TRK 3-9/16" STRT. PK/10	H	2.50/pc.	5650	DGTL BASIC SET, 1 GAUGE	1	996.00
5108	M TRK 1-3/4" STRT. PK/10	H	2.25/pc.	5707	DB CL 78 4-6-4T LOCOMOTIVE	(D) 1	2112.00
5109	M TRK 1-5/16" STRT. PK/10	H	2.25/pc.	5715	DB CL 55 0-8-0 LOCOMOTIVE	(D) 1	2950.00
5110	M TRK 7/8" STRT. PK/10	H	2.25/pc.	5750	ADLER 4-CAR SET	(D)(L) 1	4400.00
5111	M TRK 7-1/8" STRT. FEEDER	H	6.50	5751	1935 ADLER TRAIN SET	(L)(D) 1	2525.00
5112	M TRK UNCOUPLER TRACK	H	18.50	5773	DB CL 212 DIESEL LOCOMOTIVE	(D) 1	1375.00
5113	M TRK LIGHT POLE FOR 5112	H	9.85	5798	DB CL 38 4-6-0 LOCOMOTIVE	(D) 1	2650.00
5114	M TRK CROSSING 30	H	13.85	5800	GERMAN LOCAL COACH	(D) 1	105.00
5115	M TRK STRT. CONTACT TRACK	H	6.75	5801	DB LOCAL COACH	(D) 1	105.00
5116	M TRK CURV. CONTACT TRACK	H	6.75	5808	DB LOCAL BAGGAGE CAR	(D) 1	289.00
5120	M TRK 11-1/4" R. 45 PK/10	H	2.85/pc.	5812	KPEV BAGGAGE CAR	(D) 1	548.00
5128	M TRK DOUBLE SLIP REMOTE	H	56.00	5814	KPEV 3RD CL COMPARTMENT CAR	(D) 1	585.00
5129	M TRK 2-3/4" STRT. PK/10	H	2.35/pc.	5815	KPEV 4TH CL COMPARTMENT CAR	(D) 1	568.00
5131	M TRK 7-1/8" STRT. FDR W/CAP	H	9.00	5816	DB LOCAL BAGGAGE CAR	1	495.00
5137	M TRK TURNOUT R&L REMOTE	H	71.00	5817	DB 1ST CL COMPARTMENT CAR	1	545.00
5138	M TRK TURNOUT LEFT REMOTE PK/2	H	71.00	5818	DB 2ND CL COMPARTMENT CAR	1	520.00
5139	M TRK TURN. RIGHT REMOTE PK/2	H	71.00	5819	DB 2ND CL COMPARTMENT CAR	1	520.00
5140	M TRK TURN. CURVED R&L REMOTE	H	71.00	5820	DB GONDOLA	1	147.00
5141	M TRK TURN. CURV LEFT REM PK/2	H	71.00	5821	DB LOCAL COACH	1	212.00
5142	M TRK TURN CURV RIGHT REM PK/2	H	71.00	* 5823	DB STAKE CAR	1	168.00
5145	M TRK CONTACT TRACK SET	H	12.50	5824	DB BOXCAR	1	160.00
5146	M TRK STRAIGHT CIRCUIT TRACK	H	8.75	5825	DB STAKE CAR W/TIES	1	160.00
5147	M TRK CURVED CIRCUIT TRACK 15	H	8.75	5826	DB BOXCAR W/MARKER LIGHTS	1	242.00
* 5160	M TRK 14-3/16" R30 6/PK	(HOB) H	15.50	5827	DB WEIHENSTEPHAN BEER CAR	1	178.00
* 5166	M TRK 7-3/32" STRT 10/PK	(HOB) H	26.00	5829	DB SIDE DUMP CAR	1	382.00
* 5167	M TRK ASST PKG 8/PK	(HOB) H	19.00	5834	SBB APROZ BOXCAR	1	178.00
5190	M TRK E MAN. TRK EXTENSION SET	H	65.00	5835	DB SELF-DISCHARGING CAR	1	382.00
5191	M TRK E ELEC TRK EXTENSION SET	H	120.00	* 5837	GHMFFE INSULATED BOXCAR	1	479.00
5192	M TRK T1 ELEC TRK EXTEN SET	H	128.00	5838	KPEV GONDOLA	1	395.00
5193	M TRK T2 ELEC TRK EXTEN SET	H	118.00	5839	SBB WINE BARREL CAR	1	625.00
5194	M TRK T3 ELEC TRK EXTEN SET	H	195.00	5840	SBB GONDOLA	1	552.00
5200	M TRK 17-1/8" R. 30 PK/10	H	2.80/pc.	5841	SBB BOXCAR	1	669.00
5201	M TRK 17-1/8" R. 15 PK/10	H	2.50/pc.	* 5844	SOB BOXCAR	1	598.00
5202	M TRK TURNOUT R&L REMOTE	H	71.00	5845	DB HARIBO BOXCAR	(D)(L) 1	212.00
5203	M TRK TURNOUT LEFT REMOTE PK/2	H	71.00	5848	DB LOW SIDE CAR W/AUTOS	(L)(D) 1	240.00
5204	M TRK TURN. RIGHT REMOTE PK/2	H	71.00	* 5849	KPEV STAKE CAR	1	485.00
5205	M TRK 17-1/8" R. 5 43' PK/10	H	2.50/pc.	5877	DB FLAT CAR W/CONTAINERS	(D) 1	487.00
5206	M TRK 17-1/8" R. 24 17' PK/10	H	2.85/pc.	5878	DB TELESCOPING CAR	(D) 1	457.00
5207	M TRK DOUBLE SLIP REMOTE	H	56.00	5880	DB EAOS GONDOLA	1	249.00
5208	M TRK 5/16" STRAIGHT PK/10	H	2.25/pc.	5885	SBB EAOS GONDOLA	1	375.00
5210	M TRK 5/8" STRAIGHT PK/10	H	2.25/pc.	5887	SBB FLAT CAR W/STAKES	(D) 1	519.00
5211	M TRK CROSSING 48 30'	H	11.75	5890	SBB BOXCAR	(D) 1	599.00
5213	M TRK CURVED CIRCUIT TRACK 15	H	8.75	5891	SBB GONDOLA	(D) 1	556.00
5214	M TRK TURNOUT 3-WAY REMOTE	H	59.00	5892	SBB EAOS GONDOLA	1	376.00
5215	M TRK CROSSING 24 17'	H	15.00	5893	SBB TELESCOPING CAR	1	495.00
5221	M TRK TURNOUT R&L MANUAL	H	34.50	5894	SBB AVIA TANK CAR	1	350.00
5222	M TRK TURNOUT LEFT MAN. PK/2	H	34.50	5895	DB BOXCAR	1	442.00
5223	M TRK TURN. RIGHT MANUAL PK/2	H	34.50	5896	DB GONDOLA	1	369.00
* 5260	HOBBY M TRK 17-7/8" R30 6/PK	(HOB) H	17.00	5897	DB VTG TANK CAR	1	349.00
* 5266	HOBBY M TRK 17-7/8" R24 4/PK	(HOB) H	11.50	5898	DB TEXACO TANK CAR	(L) 1	255.00
* 5501	DGTL KPEV FREIGHT TRAIN	(L) 1	2889.00	* 5899	CHEMISCHEN WERKE TANK CAR	1	398.00
5502	PASSENGER TRAIN	(L)(D) 1	3850.00	5901	1 TRK 11-3/4" STR PK/10	1	125.00
5503	DGTL PASSENGER TRAIN SET	1	995.00	5908	1 TRK 3-5/16" STR PK/10	(D) 1	66.00
5504	DGTL TRK CONST. TRAIN SET	1	1115.00	5909	1 TRK 3-5/16" STR INSUL	(D) 1	11.00
* 5505	DGTL DB CL 55 0-8-0 STEAM LOCO W/TENDER	1	3295.00	5911	1 TRK 2-3/8" STR PK/10	(D) 1	66.00
* 5506	DGTL SWISS OLDTIMER FREIGHT TRAIN (L)	1	3435.00	5912	1 TRK 3-5/16" STR PK/10	1	93.00
5507	DGTL DB CL 78 4-6-4T LOCO	1	2100.00	5913	1 TRK 3-5/16" STR INSUL	1	12.50
5510	NOSTALGIA PASSENGER TRAIN	1	995.00	5914	1 TRK 2-3/8" STR PK/10	1	93.00
5511	TRACK CONSTRUCTION TRAIN	1	1115.00	5915	1 TRK 5-7/8" STR PK/10	1	104.00
5515	DGTL DB CL 55 0-8-0 LOCO	1	2950.00	5921	1 TRK 23-5/8" R. 30' PK/10	(D) 1	98.00
5516	DIGITAL ELECT. LOCO CL. EG589	(L)(D) 1	3995.00	5932	1 TRK 40" R. 22 30' PK/10	(D) 1	139.00
5517	DGTL DB CL E91 ELEC LOCO	1	4379.00	5933	1 GA TRK 40" R. 22 30' PK/10	1	186.00
5556	DGTL SBB CL Be 6/8 ELEC LOCO	1	2995.00	5934	1 TRK 46-5/16" R. 20 30' PK/10	1	189.00
5573	DGTL DB CL 212 DIESEL LOCO	1	1375.00	5962	1 TRK TURNOUT LEFT REM	(D) 1	66.00
5574	DGTL DB CL 323 DIESEL LOCO	1	1430.00	5963	1 TRK TURNOUT RIGHT REM	(D) 1	66.00
* 5577	DGTL SOB SWITCHING TRACTOR	1	1459.00	5965	1 TRK TURNOUT LEFT MAN	(D) 1	55.00
5579	DGTL DBP DIESEL LOCO	(D)(L) 1	1136.00	5966	1 TRK TURNOUT RIGHT MAN	(D) 1	55.00
5598	DGTL DB CL 38 4-6-0 LOCO	1	2650.00	5970	1 TRK TURNOUT LEFT MANUAL	1	122.00
5600	MANUAL UNCOUPLER	(D) 1	7.50	5971	1 TRK TURNOUT RIGHT MANUAL	1	114.00
5602	TRACK BUMPER	1	15.95	5972	1 TRK TURNOUT LEFT REM	(D) 1	84.50
5603	TRACK RETAIN CLIPS PK/28	(D) 1	8.95	5973	1 TRK TURNOUT RIGHT REM	(D) 1	84.50
5605	1 GAUGE CAR LIGHTING SET	1	36.75	5990	1 TRK 11-3/4" STR FDR	(D) 1	27.50
5606	FEEDER CLIP SET	1	9.50	5991	1 TRK UNCOUPLER	1	68.00
5607	TRACK BUMPER W/LIGHT	1	27.50	5992	1 TRK 5-7/8" STR FEEDER	1	32.85
5609	INSULATED RAIL JOINERS PK/10	1	11.00	5993	1 TRK UNCOUPLER MODULE 89	1	156.00
5610	RETROFIT PROTOTYPE COUPLER KIT	1	34.00	5999	1 TRACK KIT	1	35.00
5612	DISTANT SIGNAL	(D) 1	91.00	6000F	5 WIRE CABLE FOR COMMODORE	D	35.00
5613	HOME SIGNAL	1	152.00	6000G	5 WIRE CABLE APPLE II & RADIO SHACK	D	35.00
5614	DISTANT SIGNAL	1	152.00	6000H	5 WIRE CABLE FOR MACINTOSH	D	35.00
5615	PASSENGER STATION KIT	1	158.00	6000I	5 WIRE CABLE FOR IBM 9 PIN	D	38.00
5616	SIGNAL TOWER KIT	1	147.00	6000J	5 WIRE CABLE FOR IBM 25 PIN	D	38.00
5617	LOCOMOTIVE SHED KIT	1	172.00	6001	DGTL TRANSFORMER 42 WATTS 16V	D	132.00
				6015	DIGITAL BOOSTER	D	232.00

Märklin, Inc. P.O. Box 51319, 16988 W. Victor Road, New Berlin, WI 53151-0319 1-414-784-8854

American Subsidiary of Gebr., Märklin & Cie, GmbH, West Germany and Exclusive Distributor in North America for Märklin Products

NON-CATALOGED ITEMS SUPPLEMENT #3

märklin®

- The products featured in this supplement are non-cataloged items and some are produced exclusively for the North American market.
- Availability of limited run and discontinued items can not be guaranteed.
- In order to stay up-to-date on the availability of non-cataloged items we recommend you contact your local Märklin dealer.
- Prices are listed at suggested retail as of April 1, 1990.

Z-GAUGE PRODUCTS



#403

Actual track layout may vary from photo above.

Z-Gauge Briefcase Layout, #403

Imagine the surprise when you open this attache case at your next meeting—and have your Märklin Z-gauge freight train running in seconds! You'll be driving a locomotive and three freight cars across the Bavarian countryside. Briefcase is 14 x 19". Trains run on a 9-volt battery controller (battery not included) or a standard Märklin transformer. We reserve the right to substitute locomotives and cars based on availability. **\$595.00**



#509

Z-Gauge American Layout Board, #509

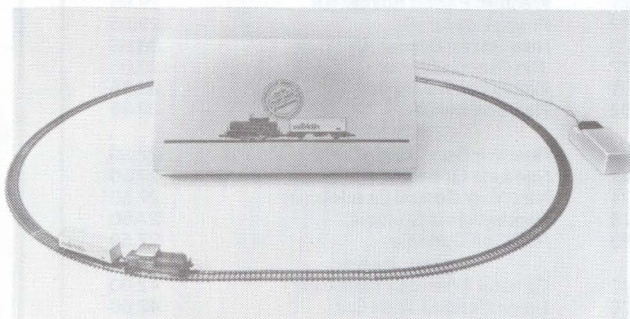
Travel across rural America on this special layout board! It is two train operational and is mounted on a sturdy wood frame measuring 21 1/3 x 28 1/4". Rolling stock and transformer are not included. **\$650.00**



#406

Z-Gauge European Layout Board, #406

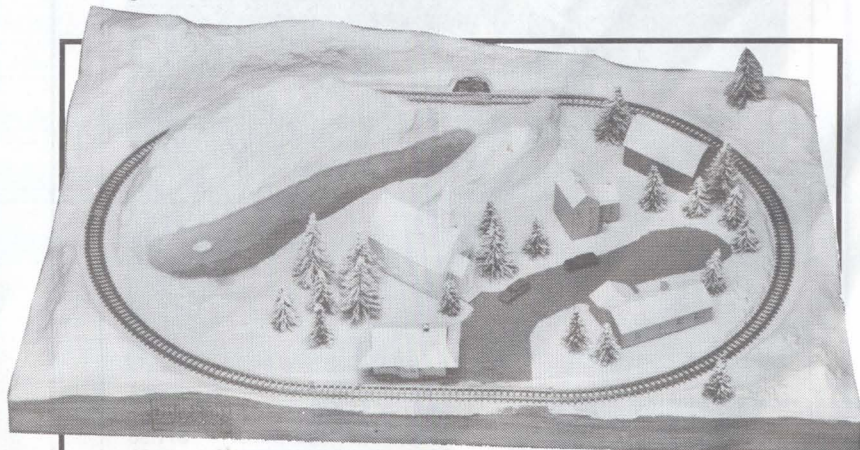
Tour the European countryside on this unique layout board! It is two-train operational and is mounted on a durable wood frame measuring 21 1/3 x 28 1/4". Rolling stock and transformer are not included. **\$785.00**



Z-Gauge Starter Set, #8174

#8174

Here's a great way to get started—the Märklin Z-gauge Starter Set. Everything you need is included: track, a diesel locomotive, Märklin container car and a 9-volt battery controller. (Battery not included.) **\$99.50**



#2611A

Z-Gauge Layout Board, #2611A

Explore the snow covered highlands of the western United States on this layout board! Oval track measures 13 x 19". Rolling stock and transformer are not included. **\$165.00**

Märklin, Inc. maintains no responsibility for inadvertent errors in the price list. Prices are subject to change without notice. All items are invoiced at prices in effect at the time of shipment.

Märklin, Inc.

P.O. Box 319, 16988 W. Victor Road, New Berlin, WI 53151

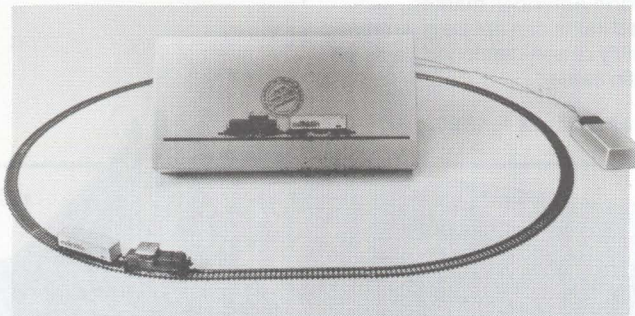
1-414-784-8854

Märklin, Inc., is the American Subsidiary of Gebr. Märklin & Cie. GmbH, West Germany, and the exclusive distributor in North America for Märklin Products.

Printed in USA Publication #2625

Z-GAUGE PRODUCTS

Z-GAUGE STARTER SET



Z-Gauge Starter Set, #8174

#8174

Here's a great way to get started—the Märklin Z-gauge Starter Set. Everything you need is included: track, a diesel locomotive, Märklin container car and a 9-volt battery controller. (Battery not included.) **\$99.50**



LIMITED Z-GAUGE CARS



As part of a special arrangement with the Miller Brewery, these cars are now available to you on a limited basis only.

2401M	Miller High Life I	25.00
2402M	Miller Genuine Draft	25.00
2403M	Miller Lite	28.00
2404M	Miller High Life (Lady)	28.00

CLASSIC AMERICAN SERIES™



Made in America for Mini-Club modelers who want to recreate Hometown, U.S.A. These polycast buildings show amazing detail right out of the box. Use standard modeling paints to further enhance the details on the building. Custom finishing will give your layout a unique and special appearance that makes it yours alone.

Item #	Structure	Suggested Retail Price
#2630	Passenger Depot	\$11.50
#2631	Two Story Residence	9.50
#2632	Factory	13.00
#2633	Feedmill	12.50
#2634	Freight Terminal	15.00
#2635	Mine Head	14.00
#2637	Country Church	12.00
#2638	Ranch House	9.50
#2639	Barn	10.00
#2640	Store Fronts	11.00

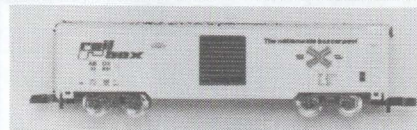
AMERICAN PROTOTYPES



#8808



#8681



#8682



#8684



#8683

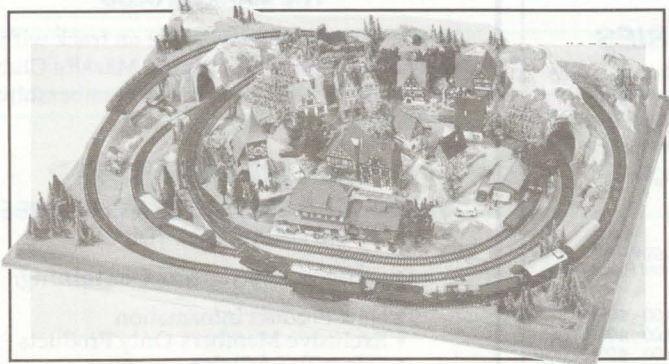


#8680

ITEM#	DESCRIPTION	SUGGESTED RETAIL PRICE
COMPLETE TRAINS		
*8189	California Zephyr Train Set (L)	399.00
LOCOMOTIVES		
*8809	Southern Pacific Daylight F7 Diesel Loco	188.00
*8807	Southern Railways Steam Locomotive	215.00
8808	New York Central Locomotive	215.00
8860	Santa Fe F-7 Diesel Locomotive (D)	178.00
8861	Southern Pacific F-7 Diesel Locomotive	178.00
*8863	Burlington Northern Locomotive (D)	178.00
BOXCARS		
8637	Milwaukee Road Boxcar	29.95
*8641	Union Pacific Boxcar (D)	29.95
*8671	Western Pacific Boxcar (D)	29.95
*8672	Frisco Boxcar (D)	29.95
*8673	New Haven Boxcar (D)	29.95
*8677	Rio Grande Boxcar	29.95
8681	Illinois Central Boxcar	29.95
8682	Rail-Box Boxcar	29.95
GONDOLAS		
*8638	Reading Gondola (D)	27.50
*8642	Soo Line Gondola	27.50
*8674	New York Central Gondola (D)	27.50
*8678	Pennsylvania Gondola	27.50
8683	Rail-Gon Gondola	27.50
TANK CARS		
*8643	General American Tank Car	42.00
*8676	Union Carbide Tank Car	42.00
8684	Mobil Gas Tank Car	42.00
PASSENGER CARS		
*8784	Southern Pacific Daylight Coach	35.00
*8785	Southern Pacific Daylight Diner Car	35.00
*8787	Southern Pacific Vista Dome Car	37.00
*8788	Southern Pacific Baggage Car	35.00
*8789	Southern Pacific Daylight Observation Car	37.00
CABOOSES		
*8636	Santa Fe Caboose	39.95
8640	Southern Pacific Caboose (D)	39.95
*8670	Burlington Northern Caboose	39.95
8680	New York Central Caboose	39.95

* Featured in the Z Gauge Catalog

HO PRODUCTS



"WALDBURG" HO-LAYOUT, #0501

- 2 Train operation (Trains & Transformer not included)
- Size - 3'3" x 4'7"
- M-Track

\$1995.00

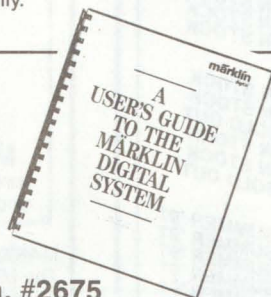
DIGITAL PRODUCTS

Digital Conversion Easy & Economical With This Central Control Unit, #6023 \$489.00



The unit, #6023, combines the Control 80, Central Unit, Keyboard and Interface functions. Best of all, the suggested retail price is less than half of that for acquiring these units separately. The unit controls as many as four different trains and four turnouts/signals.

The #6023 also will be included in the #2612A Deluxe Digital Starter Set and the #2622A Basic Digital Set. All these items will be available in North America only.



A User's Guide to the Märklin Digital System, #2675

A comprehensive introductory guide to the Märklin Digital System. Outlines all components and how they are assembled for an operating layout. Also includes programming samples so the Digital System can be interfaced with your personal computer.

\$15.95

Digital Special Interest Group

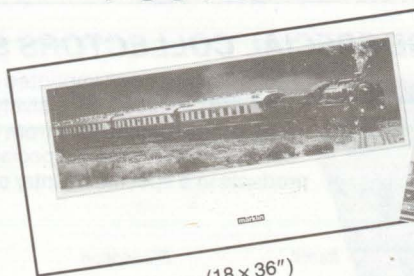
As a member of the new Märklin Digital Special Interest Group, you will receive a bi-monthly newsletter dedicated solely to the Digital System. Each newsletter is filled with in-depth articles, computer programming tips and technical expertise. Plus, as a member, you will have access to an exclusive Digital Hot Line, so if you ever have a question or a problem regarding your Digital layout, you can get it resolved quickly.

Write Now and Your First Newsletter is Free

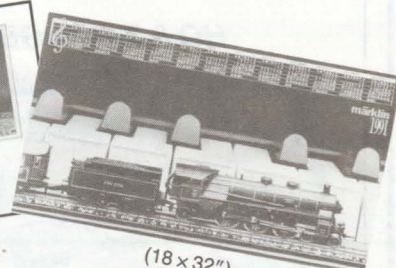
Märklin Digital SIG
16988 West Victor Rd.
P.O. Box 51319
New Berlin, WI 53151-0319

POSTER

CALENDAR



(18 x 36")



(18 x 32")

ITEM#	Description	SUGGESTED RETAIL PRICE
0428	The "Rheingold" Poster	\$5.95
0429C	1991 Märklin Calendar Wall Poster	5.95

LIMITED SETS

Two Nostalgic Trains— Together in One 50th Anniversary Set Still Available

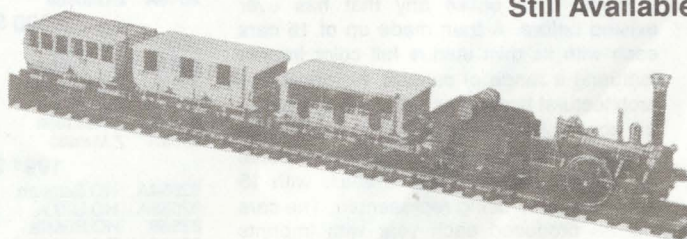


HO 50th Anniversary Set, #0050

Take a ride down memory lane with these two trains recreated especially by Märklin in 1985 to commemorate the 50th anniversary of HO! You get replicas of the first steam passenger and electric freight trains offered in HO. Only 5,000 were produced worldwide.

\$495.00

1-Gauge Adler Train Set, #5751 Still Available



This is a finely-detailed replica of the historic Adler train, circa 1935. Production limited to 5,000

\$2,525.00

GUIDEBOOKS

Greenburg's Guide To Märklin HO Train's #2613

written by Robert P. Monaghan

This book is a comprehensive guide to OO/HO production, illustrated with color and black and white photographs, and includes market values. 166 pages.

\$35.00

Greenberg's Model Railroading with Märklin Z-Gauge #2623

written by: Riley O'Connor

An easy-to-follow yet sophisticated presentation of how to build and maintain a Märklin Z Gauge layout. Basics of layout planning, bench work construction, track laying, wiring, and scenery construction, as well as layout maintenance. Softbound, 96 pages, many photos and illustrations.

Item # 2623A Hard bound \$24.95 Item #2623 Soft bound \$14.95

LIMITED ITEMS

HO & Z-GAUGE SPECIAL COLLECTORS SERIES

These limited, color imprinted collector series cars are produced exclusively for Märklin, Inc. The series themes vary from regional European breweries to special events and products in a specific country or region.

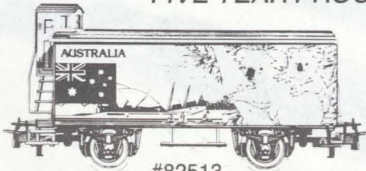


Item#	Description	Suggested Retail Price	Avail
HO Gauge			
4400A	"Bavaria" '88 Beer Car Set 6/pk	\$159.00	SOLD OUT
4400B	"Stuttgart" '88 Beer Car Set 6/pk	159.00	SOLD OUT
4400C	"Swiss" '89 Beer Car Set 6/pk	159.00	SOLD OUT
4400D	"2000th Anniversary of Bonn, Germany" Set 6/pk	159.00	AVAIL. NOW
Z-Gauge			
8400A	"Bavaria" '88 Beer Car Set 6/pk	\$159.00	SOLD OUT
8400B	"Baden Wurttemberg" '89 Beer Car Set 6/pk	159.00	SOLD OUT
88125	Spirit of France Set 3/pk	67.50	AVAIL. NOW
8400C	"Breweries of Berlin" Represents 3 from East Berlin and 3 from West Berlin	159.00	SOLD OUT

See Your Authorized Märklin Dealer For Product Availability

Collectors Please Note!

INTERNATIONAL CAR SERIES FIVE YEAR PROGRAM NOW COMPLETE



The International Series was first introduced in 1987 and is Märklin, Inc.'s way of paying tribute to the many friends of Märklin trains around the world. As a Märklin collector, you have an opportunity to collect and assemble a model train unlike any that has ever existed before. A train made up of 15 cars each with its own unique full color imprint featuring a range of cultural, historical and architectural landmarks that best symbolize the accomplishments, character and people of each selected country. The International Series will extend over five years with 15 nations in total being represented. The cars will be produced each year with imprints alternating between HO and Z-gauge until all nations have been offered in each gauge.

Item#	Country Represented	Suggested Retail Price	Avail
1987 Series			
SOLD OUT			
1988 Series			
82513	HO Australia	\$39.95	IN STOCK
82514	HO Netherlands	39.95	IN STOCK
82515	HO Italy	39.95	IN STOCK
82553	Z Austria	24.50	IN STOCK
82554	Z Belgium	24.50	IN STOCK
82555	Z U.S.A.	24.50	IN STOCK
1989 Series			
2551A	HO Great Britain	\$39.95	IN STOCK
2553A	HO Austria	39.95	IN STOCK
2556A	HO Canada	39.95	IN STOCK
2510A	Z Switzerland	24.50	IN STOCK
2514A	Z Netherlands	24.50	IN STOCK
2516A	Z Canada	24.50	IN STOCK
1990 Series			
2550A	HO Japan	\$39.95	IN STOCK
2552A	HO Sweden	39.95	IN STOCK
2557A	HO Mexico	39.95	SOLD OUT
2512A	Z France	24.50	IN STOCK
82513A	Z Australia	24.50	IN STOCK
2558A	Z Mexico	24.50	SOLD OUT
1991 Series			
82554A	HO Belgium	\$49.50	SUMMER '91
82555A	HO U.S.A.	49.50	SUMMER '91
82556	HO Russia	49.50	SUMMER '91
2511A	Z Germany	29.50	SUMMER '91
82515A	Z Italy	29.50	SUMMER '91
82516	Z Russia	29.50	SUMMER '91

THE MÄRKLIN EXCLUSIVE PROGRAM



A special Märklin dealer association has been established in Germany under the name Märklin Dealer Initiative. Participating dealers pay annual dues to belong to this "Exclusiv" association. The main feature of this program is a cooperation with the Märklin company to manufacture special line product runs which are only available to their member dealers and to Märklin's subsidiary companies in the U.S., France, Benelux countries and Switzerland. These items are packaged with a special logo titled "Exclusiv". Contact your local authorized Märklin dealer to get information on what items are available.

JOIN THE CLUB

THE MÄRKLIN CLUB

There isn't a better way to get on track with this hobby than by joining the Märklin Club. See below for the two types of memberships available.

V.I.P. MEMBERSHIP

\$19.50 IS ALL IT COSTS TO BE A V.I.P. MEMBER! AND LOOK AT ALL YOU GET!

- Quarterly Newsletters Containing:
 - New Product Information
 - Exclusive Members-Only Products
 - "How To" Articles
- Special Gifts from Märklin

OR GET ON BOARD WITH A BASIC MEMBERSHIP

\$12.50 is the cost for the Basic Membership which entitles you to the Quarterly Newsletters.

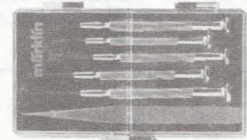
Write today for an application to join:

The Märklin Club
P.O. Box 51559
New Berlin, WI 53151-0319

SPECIALTY ITEMS

The 1991 New Items Brochure, #15800 Available from your Local Märklin Dealer.

See your local Märklin dealer today for this brochure filled with exciting information and color photographs of many of the new trains and accessories being introduced in 1991.



Märklin Tool Kit, #19005

All the tools you need for routine maintenance and repairs on your Märklin trains. \$14.95

MÄRKLIN MAGAZIN - German Text Only!

The Märklin Magazin is published 6 times a year. Each issue is packed with information, ideas and tips. Beginners and experienced modelers who enjoy model railroading will find something of interest in each issue. The magazine can be ordered in single copies or by subscription, either through an authorized Märklin Dealer, or directly through the publisher.

Dealer Subscription— #2600

6 - Issues per year. Continuous subscription until you cancel. Billed at \$6.00/Issue.

Single Back Issue— #2612 Please indicate specific number when ordering. \$6.00 each.

Publisher Subscription

Mailing Address
Modelbahnen - Welt Verlags GmbH
Stuttgarter Strasse 55-57
7320 Goppingen, West Germany
6 issues per year -- DM 45.00
(Postage included)

Märklin, Inc.

P.O. Box 51319, 16988 W. Victor Road, New Berlin, WI 53151-0319 1-414-784-8854

Märklin, Inc., is the American Subsidiary of Gebr. Märklin & Cie. GmbH, West Germany, and the exclusive distributor in North America for Märklin Products.

Printed in USA Publication #2625

primex

Modell-Eisenbahn · Spur HO

STRUCTURES & LAYOUT ACCESSORIES

The Primex line offers the following advantages:

QUALITY

The fine European engineering and quality that Märklin has always delivered. Realistic appearances, durable fabrication, plus the same ease of use associated with all Märklin products.

WIDE ASSORTMENT

You'll find over 66 structures to choose from, including residential, commercial, industrial and recreational.

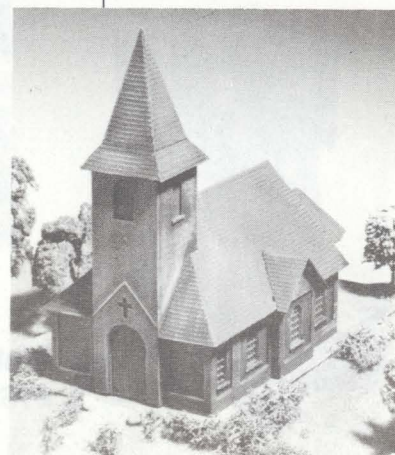
Layout accessories- amounting to more than 45 items- include: lamps, lights, vehicles, fences, bridges, tunnels, people, animals, trees, bushes. . .

Plus more than 10 locomotives and 40 HO cars are part of the Primex line. Some are limited editions, others are first run- all are Märklin quality.

MODERATELY PRICED

Retail prices start as low as \$3.95. Please check the Primex prices in the box at the end of this section and compare our prices. You will find that they are a great alternative.

STRUCTURES



Church

#1775 \$9.50



Drive Up Diner

#1698 \$11.50

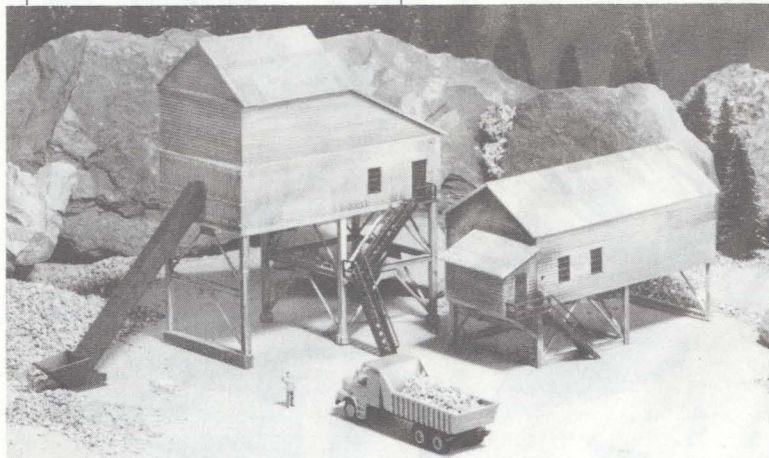
Quarry Buildings

#1780 \$11.95

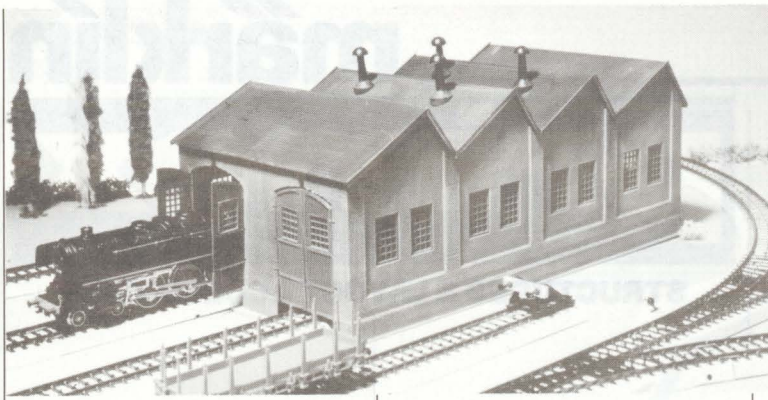


Water Mill

#1771 \$6.50



STRUCTURES



Engine House
#1774 \$14.50



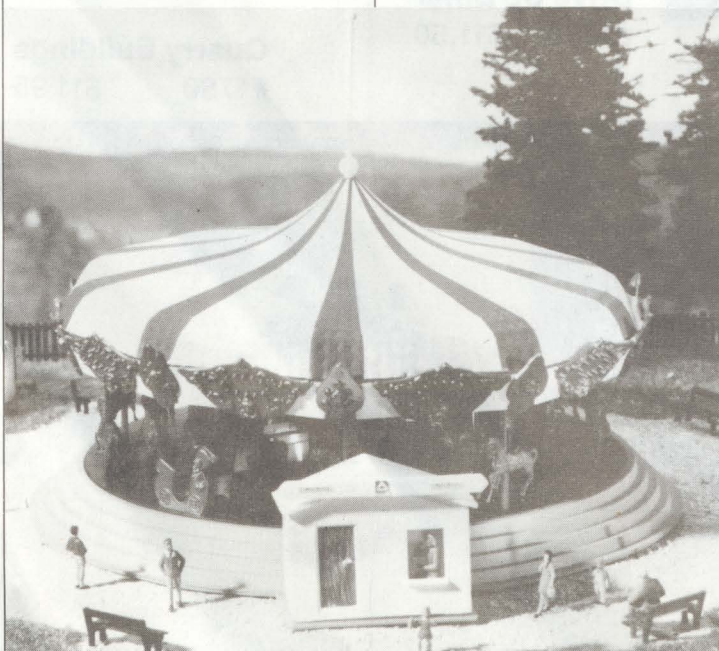
Cable Car Set
#1778 \$17.95



Water Tower
#1697 \$14.50

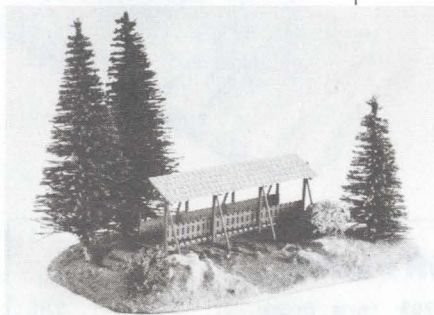


Half-Timbered House
#1747 \$14.00

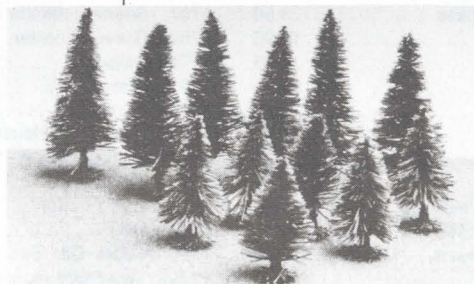


Merry-Go-Round
#1699 \$25.95

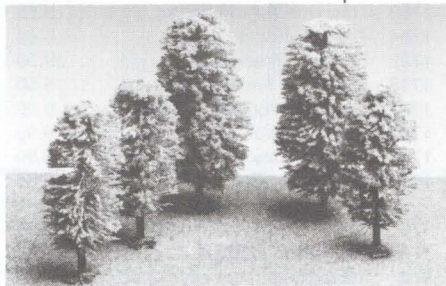
ACCESSORIES PRODUCTS



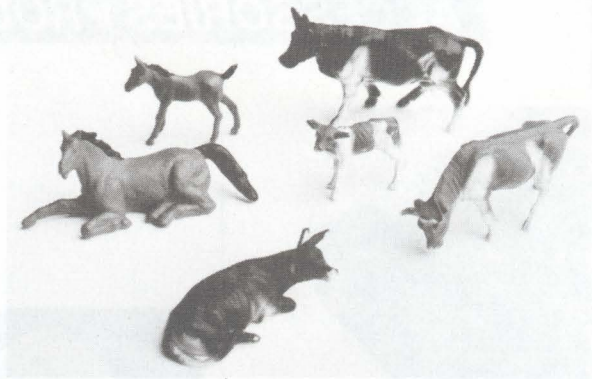
Season Motifs
#1767 \$15.75



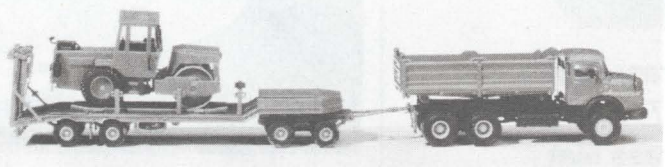
Pine Trees
#1740 \$12.95



Deciduous Trees
#1744 \$12.95



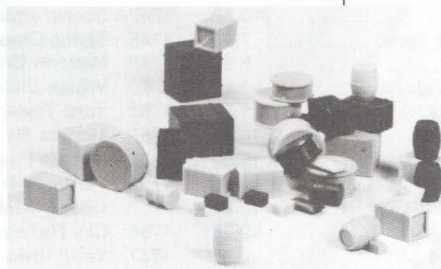
Animals
#1732 \$6.75



Truck with Trailer
#1688 \$14.95



Railroad Employees
#1730 \$6.75



Case, Barrels, Accessories
#1733 \$3.75

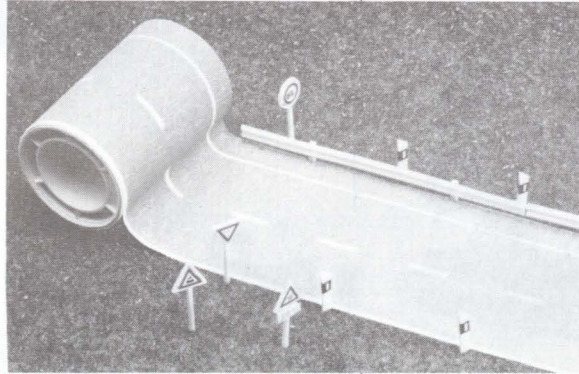
Garden Fence
#1784 \$5.60



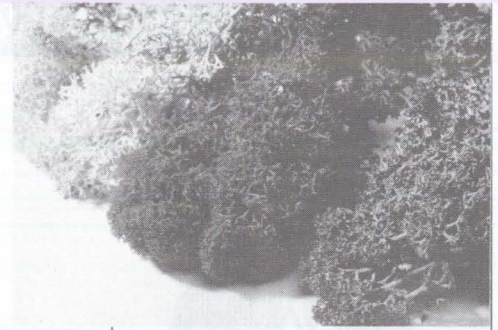
ACCESSORIES PRODUCTS



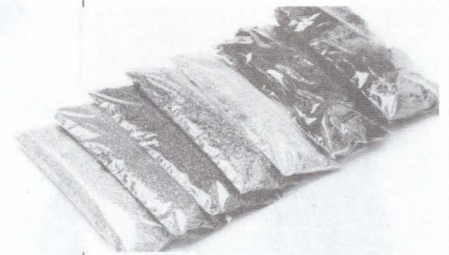
Grass Mat
#1748 \$8.50
Grass Mat
#1749 \$8.50



**Highway Materials
and Signs**
#1700 \$17.50



Ground Cover
#1766 \$7.50



**Scenery
Materials**
#1794 \$14.95

COMPLETE BUILDING & LAYOUT ACCESSORY LINE

1688 Truck with Trailer/Steam Roller... \$14.95	1732 Animals (6)..... 6.75	1763 Truss Bridge..... 3.95
1689 Castle 21.00	1733 Cases, Barrels, Accessories..... 3.75	1764 Curved Bridge..... 3.95
1690 Train Station..... 13.50	1734 Half-Timbered House..... 7.50	1765 Bridge Pillars..... 3.95
1691 Signal Tower..... 6.50	1735 Water Tower "Crailsheim"..... 8.95	1766 Ground Cover..... 7.50
1692 Station Platform..... 9.75	1736 Pedestrian Overpass..... 3.50	1767 Scenery Motifs 4pcs..... 15.75
1693 Post Office..... 12.95	1737 Tunnel..... 12.95	1769 Gravel Loader..... 7.95
1694 Challet..... 9.95	1738 Tunnel..... 8.95	1770 Palace..... 11.95
1695 Hotel..... 16.50	1739 Corner Tunnel..... 29.95	1771 Water Mill..... 6.50
1696 Track Scale..... 11.50	1740 Pine Trees 12/pk..... 12.95	1772 Bungalow..... 3.95
1697 Water Tower..... 14.50	1741 Pine Trees 6/pk..... 10.95	1773 Suburban House..... 3.95
1698 Drive-Up Diner..... 11.50	1742 Fruit Trees 4/pk..... 12.95	1774 Engine House - 2 Stalls..... 14.50
1699 Merry-Go-Round with Motor..... 25.95	1743 Gas Light..... 8.95	1775 Church..... 9.50
1700 Highway Material & Signs..... 17.50	1744 Five Deciduous Trees..... 12.95	1776 Gas Station..... 5.95
1703 Fire Station..... 13.95	1745 Four Deciduous Trees..... 13.95	1777 Inn..... 6.95
1704 Public Swimming Pool..... 10.50	1747 Half-Timbered House..... 14.00	1778 Cable Car Set..... 17.95
1705 Saw Mill..... 10.50	1747A Scenic Material..... 3.95	1779 Two-Story Row Houses..... 10.50
1706 Terraced Houses 2pcs..... 7.95	1748 Spring Green Grass Mat 29" x 39"..... 8.50	1780 Quarry Buildings..... 11.95
1707 Kindergarten..... 8.95	1749 Meadow Grass Mat 29" x 39"..... 8.50	1781 Coaling Station..... 8.50
1708 Minehead Building..... 11.95	1750 Village Station "Heildenfeld"..... 11.50	1782 Bungalow..... 6.75
1709 Liquid Gas Works..... 11.95	1751 Yard Tower..... 6.75	1783 Trackside Accessory Kit..... 5.50
1714 Industrial Plant..... 14.95	1752 Modern Railway Station..... 13.95	1784 Garden Fence..... 5.60
1719 32 Plugs & 8 Sockets..... 10.50	1753 Modern Passenger Platform..... 6.75	1785 Cement Truck..... 9.50
1720 Dual Lamp Station ARC Light..... 11.95	1754 Yard Tower..... 4.50	1786 Car Wash Facility..... 5.50
1721 Wooded Mast Street Light..... 10.95	1755 Lattice Mast Station Light..... 11.95	1787 Lineside Worker's House..... 6.50
1722 Dual Lamp Street Lamp..... 12.75	1756 City Railway Station..... 18.00	1788 Vehicles 8/pk..... 9.95
1723 Distribution Strips (2)..... 6.75	1757 Yard Tower..... 9.50	1791 Nursery Buildings..... 5.50
1724 Set of Wooden Masts & Steel Lights..... 26.95	1758 Train Shed..... 12.00	1792 Cottage & Barn..... 5.60
1725 Street Light..... 8.00	1759 Tunnel Portal 2pcs..... 4.95	1794 Scenic Materials..... 14.95
1727 Street Lamp..... 8.95	1760 Small Freight Station..... 6.50	1795 Wind Mill..... 9.95
1728 Lattice Mast Station ARC Light..... 10.75	1760A Railway Station..... 6.50	1796 Flowering Bushes..... 9.95
1729 Light Socket and Bulb (4)..... 7.75	1761 Single House..... 10.75	1797 Chapel..... 8.75
1730 Railroad Employees (6)..... 6.75	1761A Engine House..... 7.95	1798 Dairy Barn..... 5.95
1731 Passengers 6/pk..... 6.75	1762 Arch Bridge..... 3.95	1799 Six Deciduous Trees..... 14.95

SEE YOUR AUTHORIZED MÄRKLIN DEALER FOR A CURRENT PRIMEX CATALOG!

Märklin, Inc.

P.O. Box 51319, 16988 W. Victor Road, New Berlin, WI 53151-0319 1-414-784-8854
Märklin, Inc., is the American Subsidiary of Gebr. Märklin & Cie. GmbH, West Germany, and the exclusive distributor in North America for Märklin Products.
Printed in USA Publication #2625

ITEM #	DESCRIPTION	SCALE	PRICE	ITEM #	DESCRIPTION	SCALE	PRICE
6016	DIGITAL BOOSTER 2-RAIL DC	D	249.00	7164	PICKUP SHOE	S	2.35
* 6018	BOOSTER FOR 1 GAUGE	1	265.00	7169	PLUG & WIRE SET	(P) S	8.85
6020	DGTL CNTRL UNIT FOR MARKLIN HO	D	329.00	7171	M TRK SOUND DEADENING KIT	H	8.85
6023	DGTL CENTRAL CONTROL UNIT	D	489.00	7175	PICKUP SHOE PK/2	S	7.60
6027	DGTL CNTRL UNIT FOR 2RAIL DC	D	399.00	7180	***** CONVERSION KIT	S	123.00
6032	DIGITAL PROGRAMMER FOR DC LOCO	D	350.00	7181	HOME SIGNAL W/SEMAPHORE	(P) H	42.50
* 6030	CENTRAL UNIT FOR 1 GAUGE	1	595.00	7182	COLOR LIGHT SIGNAL	(P) H	42.50
6036	DIGITAL CONTROL 80 F	D	285.00	7183	PICKUP SHOE FOR 3021	S	3.00
6038	DIGITAL 72" EXTENSION CABLE	D	79.00	7185	PICKUP SHOE	S	2.35
6039	DIGITAL 25" EXTENSION CABLE	D	73.00	7186	REMOTE CONTROL TURNTABLE	H	320.00
6040	DIGITAL KEYBOARD	D	249.00	7187	M TRK COLOR LIT DISTANT SIGNAL	H	31.50
6041	DIGITAL SWITCHBOARD	D	320.00	7188	M TRK COLOR LIGHT HOME SIGNAL	H	48.00
6043	DIGITAL MEMORY	D	369.00	7190	M TRK BUMPER	H	6.50
6050	DIGITAL INTERFACE	D	238.00	7191	M TRK BUMPER W/LIGHT	H	12.00
* 6070	DGTL INFRA CONTROL 80 F	D	398.00	7192	M TRK AUTO. CROSSING GATE SET	H	116.00
* 6071	DGTL IR CONTROL	D	240.00	7193	EXTENSION SET FOR 7192	H	29.85
6074	DIGITAL K-87 DC DECODER	D	149.00	7194	REVERSE UNIT SPRINGS PK/5	S	3.80
6080	DGTL C 80 LOCO DECODER PK/5	D	450.00	7195	NUMBER PLATE SET	H	5.75
6081	DGTL C 81 LOCO DECODER PK/5	D	499.00	7197	CAR LIGHTING KIT F/4072&73	(D) S	18.50
6082	DGTL C 82 LOCO DECODER PK/5	D	470.00	7198	PICKUP SHOE FOR 7077	S	3.75
6083	DGTL K 83 ACCESSORY DECODER	D	97.00	7201	M TRK CATENARY FEEDER MAST	H	13.50
6084	DGTL K 84 ACCESSORY DECODER	D	128.00	7203	CLOSE COUPLERS PK/50	S	50.00
6085	DGTL C 85 LOCO DECODER 1 GAUGE	D	139.00	7204	PROTOTYPE COUPLER REPRO. PK/50	S	15.75
6086	DGTL K 86 ACCESSORY DECODER	D	125.00	7205	CONVERSION CLOSE COUPLER PK/50	S	50.00
6087	DGTL K 87 ACCESSORY DECODER	D	99.00	7207	SCHEREN PANTOGRAPH	S	9.00
6088	DGTL S 88 TRK DETEC MODULE	D	117.00	7208	SINGLE ARM PANTOGRAPH	S	18.50
6089	DGTL EXTENSION CABLE FOR S 88	D	25.75	7209	DISTRIBUTION STRIP	S	2.15
6090	DGTL PROPULSION SET	D	145.00	7210	CONTROL BOX FOR CIRCUITS	S	16.00
6606	IN/OUTDOOR TRAIN CONTROLLER	1	121.00	7211	CONTROL BOX FOR ON-OFF SWITCHES	S	17.75
6627	TRANSFORMER 30 WATT 16 VOLT	H	129.00	7218	DOUBLE ARM PANTOGRAPH	S	12.00
6667	TRANSFORMER 16 WATT 16 VOLT	H	94.00	7219	SINGLE ARM PANTOGRAPH	S	18.50
6727	TRANSFORMER 12 WATT 8 VOLT DC	Z	114.00	7224	HO RERAILER	H	3.65
7000	WIRE STAPLES PK/50	S	3.50	7226	SMOKE UNIT KIT	S	22.00
7001	COUPLER GAUGE FOR MARKLIN HO	H	1.50	7230	K/M SIGNAL MOUNTING BRACKET	H	1.20
7003	K/M CATENARY FEEDER WIRE	H	2.25	7234	K/M SIG BRIDGE BASE PLATE PK/2	H	3.50
7004	K/M CATENARY FASTENER HARDWARE	H	1.90	7236	K/M COLOR LIGHT DISTANT SIGNAL	H	31.00
7005	CATENARY SET FOR M SIGNALS	H	21.75	7237	K/M COLOR LIGHT DISTANT SIGNAL	H	34.00
7006	K/M CATENARY INSULATORS PK/10	H	11.00	7238	K/M COLOR LIGHT DISTANT SIGNAL	H	61.00
7009	M CATENARY MAST PK/10	H	35.00	7239	K/M COLOR LIGHT HOME SIGNAL	H	59.00
7010	M CATENARY FEEDER MAST	H	8.50	7240	K/M COLOR LIGHT HOME SIGNAL	H	61.00
7012	M CATENARY SIGNAL FEEDER MAST	H	6.80	7241	K/M COLOR LIGHT HOME SIGNAL	H	76.75
7013	K/M CATENARY WIRE 9" PK/20	H	1.98/pc.	7242	K/M COLOR LIGHT YARD SIGNAL	H	61.50
7014	K/M CATENARY WIRE 4" PK/10	H	1.15/pc.	7245	UNIVERSAL RELAY	H	36.50
7015	K/M CATENARY WIRE 4" PK/10	H	1.15/pc.	7247	SINGLE ARM PANTOGRAPH	S	22.50
7016	K/M CAT. CROSS SPAN 15" PK/5	H	6.80/pc.	7250	BRIDGE PILLAR BASE 1/10" PK/10	H	10.60
7017	K/M CAT. CROSS SPAN 11" PK/5	H	5.80/pc.	7251	PILLAR BASE F/7250 1/8" PK/10	H	10.60
7018	K/M CATENARY WIRE 10" PK/20	H	1.90/pc.	7252	BRIDGE PILLAR 1/4" PK/10	H	10.60
7019	K/M CATENARY WIRE 14" PK/20	H	2.00/pc.	7253	BRIDGE PILLAR 1-3/16" PK/2	H	3.80
7021	K/M CAT. TOWER MAST PK/5	H	5.20/pc.	7262	K/M TRUSS BRIDGE 7-1/8"	H	13.00
7022	K/M CAT. WIRE 4" INSUL. PK/10	H	2.80/pc.	7263	K/M ARCHED BRIDGE 14 1/8"	H	29.00
7023	K/M CATENARY WIRE 4" PK/10	H	1.20/pc.	7267	K/M BRIDGE RAMP 14-1/8" R.	H	12.00
7036	M TRK DISTANT SIGNAL W/DISC	H	41.50	7268	K/M BRIDGE RAMP STR 7-1/8"	H	11.50
7038	M TRK DISTANT SIGNAL W/DISC	H	59.00	7269	M BRIDGE RAMP 17-1/8" R.	H	13.85
7039	M TRK HOME SIGNAL W/SEMAPHORE	H	44.00	7277	K/M CAT. CROSSING SECTION PK/2	H	6.00
7040	M TRK HOME SIGNAL W/SEMAPHORES	H	53.00	7278	K/M CATENARY WIRE 9" PK/10	H	19.00
7041	M TRK HOME SIGNAL W/SEMAPHORES	H	63.50	7280	SINGLE LAMP STREET LIGHT	H	11.50
7042	M TRK YARD SIGNAL	H	45.75	7281	STATION PLATFORM LIGHT	H	15.25
7046	ARC LIGHT W/LATTICE MAST	H	14.75	7282	DOUBLE LAMP STREET LIGHT	H	14.75
7047	STREET LIGHT	H	10.85	7283	LAMP WITH LATTICE MAST	H	14.75
7048	ARC LIGHT	H	13.70	7284	PARK LIGHT	H	9.00
7051	REMOTE CONTROL MAGNET CRANE	H	299.00	7287	DGTL. TURNTABLE EXT. KIT	H	35.00
7072	CONTROL BOX FOR ACCESSORIES	H	14.75	7288	3-STALL ROUNDHOUSE KIT	H	95.00
7074	CAR LIGHTING KIT PK/2	H	13.00	7289	2-STALL LOCOMOTIVE SHED KIT	H	42.00
7076	PICKUP SHOE FOR 7079	S	3.50	7292	M TRK AUTO. CROSSING GATE SET	H	83.00
7077	CAR LIGHTING KIT PK/5	S	24.75	7293	EXTENSION SET FOR 7292	H	25.75
7079	CAR MARKER LIGHT	S	6.35	7294	AUTOMATIC TRANSFER TABLE	H	290.00
7100	GRAY WIRE 33"	S	2.80	7295	CATENARY SET FOR 7294	H	32.00
7101	BLUE WIRE 33"	S	2.80	7299	M TRACK MOUNTING SCREWS PK/200	H	6.00
7102	BROWN WIRE 33"	S	2.80	7319	CURRENT-COND CLSE CPLR SET	H	37.50
7103	YELLOW WIRE 33"	S	2.80	7320	CAR LIGHTING KIT	H	18.50
7105	RED WIRE 33"	S	2.80	7322	CAR LIGHTING KIT FOR 4090	H	13.50
7107	EXTENSION CABLE FOR 6606	S	15.50	7323	CAR LIGHTING KIT F/4107&08	H	7.00
7111	BROWN SOCKET PK/10	S	2.30	7329	CAR LIGHTING KIT	H	20.50
7112	YELLOW SOCKET PK/10	S	2.30	7330	CAR LIGHTING KIT	H	20.50
7113	GREEN SOCKET PK/10	S	2.30	7332	CAR LIGHTING KIT FOR 2660/2860	(D) H	24.00
7114	ORANGE SOCKET PK/10	S	2.30	7333	CAR LIGHTING KIT	H	20.50
7115	RED SOCKET PK/10	S	2.30	7335	LIGHTING KIT F/4275-4278, 4238-4239	H	22.50
7117	GRAY SOCKET PK/10	S	2.30	7339	M TRK MAN. COLOR LIGHT SIGNAL	H	32.50
7130	PLUG&SOCKET ASSORTMENT PK/100	S	21.00	7389	TRACK BUMPER W/LD LIGHT	H	10.75
7131	BROWN PLUG W/SOCKET PK/10	S	2.30	7390	M MECHANICAL CROSSING GATE SET	H	44.00
7132	YELLOW PLUG W/SOCKET PK/10	S	2.30	7391	K/M TRACK BUMPER	H	4.75
7133	GREEN PLUG W/SOCKET PK/10	S	2.30	7500	K TRK GROUND TERMINAL	H	1.90
7134	ORANGE PLUG W/SOCKET PK/10	S	2.30	7501	K TRK CATENARY FEEDER MAST	H	13.50
7135	RED PLUG W/SOCKET PK/10	S	2.30	7504	K TRK CENTER STUD TERMINAL	H	1.50
7137	GRAY PLUG W/SOCKET PK/10	S	2.30	7505	CATENARY SET FOR K/M SIGNALS	H	21.50
7149	OILER PK/10	S	6.35/pc.	7509	K TRK CATENARY MAST PK/10	H	34.50
7151	HO TRACTION TIRE PK/10	S	2.65	7510	K CATENARY FEEDER MAST	H	8.50
7152	HO TRACTION TIRE PK/10	S	2.65	7511	K/M CATENARY BRIDGE MAST PK/10	H	36.00
7153	HO TRACTION TIRE PK/10	S	2.65	7512	K CATENARY SIGNAL FEEDER MAST	H	6.80
7154	HO TRACTION TIRE PK/10	S	2.65	7522	K TRACK INSULATOR PK/5	H	4.00
7155	CROSSING GATE SET	(P) H	43.50	7525	K/M CATENARY SUPPORT ARM PK/10	H	23.50
7156	CONTROL BOX & WIRING SET	(P) S	20.75	7548	UNDER LAYOUT MOUNTING KIT	H	12.50
7158	TRACK BUMPER	(P) H	11.00	7549	TURNOUT MECHANISM F/2271&75	H	21.50

ITEM #	DESCRIPTION	SCALE	PRICE	ITEM #	DESCRIPTION	SCALE	PRICE
7555	CONTACT REED SWITCH SET	H	12.95	* 8603	SBB PIGGYBACK CAR	Z	39.00
7556	MAGNET SET FOR 7555	H	12.95	* 8604	DBB PIGGYBACK CAR	Z	39.00
7557	MAGNET SET FOR LOCOS 3/PK	S	12.95	* 8609	DB FREIGHT BAGGAGE CAR	Z	20.00
7558	MAGNET SET FOR CARS 2/PK	S	12.95	8610	DB LOW SIDE GONDOLA	Z	12.00
7569	K BRIDGE RAMP 16-3/4" R.	H	13.85	8611	DB SHELL TANK CAR	Z	17.85
7585	HO INSULATED WHEEL SET PK/2	H	5.95	8612	DB ESSO TANK CAR	Z	17.85
7586	HO INSULATED WHEEL SET PK/4	H	6.35	8613	DB ARAL TANK CAR	Z	17.85
7587	HO INSULATED WHEEL SET PK/3	H	5.75	8614	DB BP TANK CAR	Z	17.85
7588	HO INSULATED WHEEL SET PK/4	H	7.50	8615	DB CONTAINER CAR	Z	17.00
7589	HO INSULATED WHEEL SET PK/4	H	7.50	8617	DB MARKLIN CONTAINER CAR	Z	17.00
7592	K TRK AUTO CROSSING GATE SET	H	88.00	8618	DB HEWLETT PACKARD CONT. CAR	Z	17.00
7593	EXTENSION SET FOR 7592	H	26.50	8619	DB LUMBER CAR SET	Z	29.75
7595	K TRACK RAIL JOINERS FOR 2205	H	6.00	8620	DB TRANSFORMER CAR	Z	34.95
7599	K TRACK MOUNTING SCREWS PK/200	H	7.65	8622	DB GONDOLA	Z	14.00
7651	DIGITAL ROTARY CRANE	D	450.00	8623	DB BOXCAR W/SLIDING ROOF&WALLS	Z	25.00
* 7686	DIGITAL TURNABLE	H	559.00	8624	DB BALLAST CAR	Z	26.95
8104	PRUSSIAN PASSENGER TRAIN SET	Z	283.00	8625	DB SHELL TANK CAR	Z	29.95
8108	ORIENT EXPRESS TRAIN SET	Z	485.00	8626	DB ESSO TANK CAR	Z	29.95
8112	DB CHIEMGAU RAILBUS SET	Z	174.00	8627	DB ARAL TANK CAR	Z	29.95
8114	RED CROSS SET	Z	513.00	8628	DB BP TANK CAR	Z	29.95
* 8119	KPEV LANGENSCHWALBACH TRAIN	Z	489.00	8629	DEA TEXACO TANK CAR	Z	17.85
8130	PROVINCIAL RR FREIGHT SET	Z	319.00	8630	DB HOPPER CAR	Z	28.50
8131	ALLGAU-ZOLLERN TRAIN SET	(D)(L) Z	342.00	8635	DB BOXCAR WITH SLIDING ROOF	Z	31.00
8133	DRG RHEINGOLD TRAIN SET	Z	479.00	+ 8636	SANTA FE CABOOSE	Z	39.95
8134	DBP MAIL TRAIN SET	(D)(L) Z	242.00	+ 8637	MILWAUKEE ROAD BOXCAR	Z	29.95
8160	DELUXE STEAM STARTER SET	(D) Z	549.00	+ 8638	READING GONDOLA	(D) Z	27.50
8165	SMALL STEAM STARTER SET	Z	199.00	8639	DRG BOXCAR W/BRAKEMAN'S CAB	Z	25.50
8174	BATTERY Z STARTER SET	Z	99.50	+ 8640	SOUTHERN PACIFIC CABOOSE	(D) Z	39.95
8182	SM. STEAM STARTER SET	Z	199.00	+ 8641	UNION PACIFIC BOXCAR	(D) Z	29.95
8189	CALIFORNIA ZEPHYR TRAIN	(D)(L) Z	399.00	+ 8642	SOO LINE GONDOLA	Z	27.50
8190	E MANUAL TRACK EXTENSION SET	Z	72.00	8644	DB MARKLIN Z CONTAINER CAR	Z	17.50
8191	E ELECTRIC TRACK EXTENSION SET	Z	120.00	8647	DB STAUFENBRAU BEER CAR	Z	17.00
8192	T1 ELEC. TRACK EXTENSION SET	Z	127.00	8648	DB DINKELACKER BEER CAR	Z	17.00
8193	T2 ELEC. TRACK EXTENSION SET	Z	120.00	8649	K.W.ST.E. BOXCAR	Z	26.85
8194	T3 ELEC. TRACK EXTENSION SET	Z	185.00	8650	DB EAOS GONDOLA	Z	30.00
8198	CATENARY SET FOR S&E	Z	112.00	8651	SBB EAOS GONDOLA	Z	30.00
8199	CATENARY SET FOR T1&T2&T3	Z	235.00	8652	SBB EAOS GONDOLA	Z	30.00
8304	SNCF MICHELINE RAILBUS — HAMO VERSION	(E) H	295.00	8653	SBB TELESCOPING CAR	Z	31.00
8312	HAMO K.W.ST.E. CL T5 LOCO	(D) H	233.00	* 8655	DB STAKE CAR	Z	36.00
8321	HAMO SNCF CL BB 15 000 ELEC LOCO	(E) H	309.00	* 8656	SBB SLIDING WALL BOXCAR	Z	32.50
8323	HAMO SBB CL Re 4/4 ELEC.	(D) H	218.00	8657	DB CRANE CAR SET	Z	48.95
8324	HAMO NS CL 1100 ELEC LOCO	(D) H	218.00	8658	OLDENBURG STAKE CAR	Z	30.00
8327	HAMO NS CL 1100 ELEC LOCO	(D) H	218.00	8659	DB VTG TANK CAR	Z	17.85
* 8334	HAMO SNCF CL BB 26000 ELECT LO	(E) H	396.00	8660	DB EVA TANK CAR	Z	29.95
8356	HAMO SBB CL Be 6/8 ELEC LOCO	(D) H	329.00	* 8661	"FURSTENBERG" BEER CAR	Z	32.50
8366	HAMO DB CL 152 ELEC LOCO	(D) H	260.00	8662	DB FLATCAR W/TRUCK & TRAILER	Z	38.00
* 8386	HAMO NS PTT POSTAL RAILCAR	(E) H	395.00	8664	BARUM CIRCUS CAR SET	Z	198.00
8388	NS HAMO POSTAL RAILCAR	(E) H	298.00	8665	DB LOW SIDE GONDOLA W/TARP	Z	15.00
8400D	AUTO COMPANIES 6-CARS	Z		* 8666	DB SILO CAR	Z	34.00
8401	CHALET 'ST. MORITZ'	(D) Z	37.50	* 8668	DB BOXCAR W/HINGED ROOF	Z	36.50
8402	FARM HOUSE 'SILVAPLANA'	Z	37.50	+ 8670	BURLINGTON NORTH. CABOOSE	(D) Z	39.95
8404	ALPINE BARN W/WATER TROUGH	Z	37.50	+ 8671	WESTERN PACIFIC BOXCAR	(D) Z	29.95
8405	ALPINE DAIRY 'NAUDERS'	Z	37.50	+ 8672	FRISCO BOXCAR	(D) Z	29.95
8406	ALPINE HUT 'SCHONJOCHL'	Z	37.50	+ 8673	NEW HAVEN BOXCAR	(D) Z	29.95
8407	MILL 'SERFAUS'	Z	37.50	+ 8674	NEW YORK CENTRAL GONDOLA	(D) Z	27.50
8408	MOUNTAIN CHALET 'STUBEN'	Z	37.50	+ 8677	RIO GRANDE BOXCAR	Z	29.95
8409	FARM HOUSE 'SYKE'	Z	35.50	+ 8678	PENNSYLVANIA GONDOLA	Z	27.50
8410	FISHERMAN COTTAGE 'PELLWORM'	Z	35.50	+ 8679	SOUTHERN CABOOSE	Z	39.95
8411	THATCHED COTTAGE 'PLON'	Z	35.50	+ 8680	NEW YORK CENTRAL CABOOSE	Z	39.95
8412	NORTH FRISIAN HOUSE 'SYLT'	Z	35.50	+ 8681	ILLINOIS CENTRAL BOXCAR	Z	29.95
8471	HAMO DB ICE COACH	(D) H	86.00	+ 8682	RAIL-BOX BOXCAR	Z	29.95
8500	Z TRK 4-3/8" STRT. PK/10	Z	2.35/pc.	+ 8683	RAIL-GON GONDOLA	Z	27.50
8503	Z TRK 2-3/16" STRT. PK/10	Z	2.10/pc.	+ 8684	MOBILGAS TANK CAR	Z	42.00
8504	Z TRK 1" STRT. PK/10	Z	2.10/pc.	8685	DB COVERED HOPPER CAR	Z	30.00
8505	Z TRK 8-13/16" STRT. PK/10	Z	2.95/pc.	8700	K.W.ST.E. LOCAL COACH	Z	18.00
8506	Z TRK 4-5/16" STRT. PK/10	Z	2.35/pc.	8701	K.W.ST.E. LOCAL COACH	Z	18.00
8507	Z TRK 4-7/16" STRT. PK/10	Z	2.35/pc.	8703	DB LOCAL BAGGAGE CAR	Z	29.00
8510	Z TRK 5-3/4" R. 45 PK/10	Z	2.50/pc.	8704	DB 2ND CL COMPARTMENT CAR	Z	29.00
8520	Z TRK 7-11/16" R. 45 PK/10	Z	2.75/pc.	8705	DB 2ND CL COMP. CAR W/BRK CAB	Z	32.00
8521	Z TRK 7-11/16" R. 30 PK/10	Z	2.50/pc.	8706	DB 1ST/2ND CL LOCAL COACH	Z	29.00
8529	Z TRK CURVED CIRCUIT TRACK 30	Z	11.90	8707	DB 2ND CL LOCAL COACH	Z	29.00
8530	Z TRK 8-11/16" R. 45 PK/10	Z	2.75/pc.	8708	DB 2ND CL COACH W/BAGGAGE AREA	Z	29.00
8531	Z TRK 8-11/16" R. 30 PK/10	Z	2.60/pc.	8710	DB 1ST CL EXPRESS COACH	Z	27.50
8539	Z TRK CURVED CIRCUIT TRACK 30	Z	11.90	8711	DB 2ND CL EXPRESS COACH	Z	27.50
8559	Z TRK CROSSING 13	Z	16.95	8712	DB EXPRESS BAGGAGE CAR	Z	27.50
8560	Z TRK DOUBLE SLIP REMOTE	Z	53.50	8713	DB DINING CAR	Z	27.50
8562	Z TRK TURNOUT LEFT REMOTE	Z	36.50	8715	DB AUTO CARRIER	Z	35.00
8563	Z TRK TURNOUT RIGHT REMOTE	Z	36.50	8716	DB 2ND CL COMMUTER COACH	Z	29.95
8565	Z TRK TURNOUT LEFT MANUAL	Z	22.85	8717	DB 1ST/2ND CL COMMUTER COACH	Z	29.95
8566	Z TRK TURNOUT RIGHT MANUAL	Z	22.85	8718	DB 2ND CL COMMUTER CAB COACH	Z	65.00
8568	Z TRK TURNOUT CURV LEFT REMOTE	Z	39.50	8720	DB 1ST CL EXPRESS COACH	(D) Z	28.50
8569	Z TRK TURNOUT CURV RIGHT REMOTE	Z	39.50	8721	DB 2ND CL EXPRESS COACH	(D) Z	28.50
8587	Z TRK UNCOUPLER TRACK	Z	21.00	8722	DB EXPRESS BAGGAGE CAR	(D) Z	28.50
8588	Z TRK STRAIGHT ISOLATING TRACK	Z	6.35	8723	DB DINING CAR	(D) Z	28.50
8589	Z TRK STRAIGHT CIRCUIT TRACK	Z	10.85	8724	DB TEE/IC 1ST CL COACH	Z	28.50
8590	Z TRK 4-3/8" STR. FEEDER TRACK	Z	7.50	8725	DB TEE/IC 1ST CL COACH	Z	28.50
8591	Z TRK 19-1/4" R. PK/10	Z	2.50/pc.	8726	DB TEE/IC DINING CAR	Z	28.50
8592	Z TRK 4-3/4" (ADJUSTABLE) PK/10	Z	7.25/pc.	8727	DB TEE/IC DINING CAR	Z	47.50
8594	Z TRK 26" FLEX PK/10	Z	8.35/pc.	8728	DB TEE VISTA DOME CAR	Z	27.85
8600	DB REFRIGERATOR CAR	Z	16.50	8730	K.BAY.STS.E. 3RD CL COACH	Z	38.95
* 8601	KSSTE GONDOLA W/HINGED COVERS	Z	34.00	8736	8726 W/LIGHTS	(D) Z	48.95
* 8602	DRG ALSACE-LORRAINE BOXCAR	Z	34.00	8737	8727 W/LIGHTS	(D) Z	67.85
				8738	8728 W/LIGHTS	(D) Z	58.00

ITEM #	DESCRIPTION	SCALE	PRICE	ITEM #	DESCRIPTION	SCALE	PRICE
8739	K.W.ST.E. LOCAL COACH	Z	17.85	8922	Z CATENARY WIRE 6-1/2" PK/10	Z	19.75
8742	SBB SLUMBER COACH	(D) Z	34.85	8923	Z CAT. WIRE 7-1/8" ADJUS PK/10	Z	36.50
8743	DB 1ST CL INTERREGIO COACH	Z	28.50	8924	Z CAT. CROSS SPAN 4-7/8" PK/10	Z	72.00
8744	DB 1ST CL INTERREGIO COACH	Z	28.50	8925	Z CAT. CROSS SPAN 2-7/8" PK/10	Z	60.00
8745	SBB 1ST CL EXPRESS COACH	Z	35.50	8926	Z CATENARY HARDWARE KIT	Z	5.85
8746	SBB 2ND CL EXPRESS COACH	Z	35.50	8927	Z CATENARY FEEDERS W/WIRE	Z	4.80
8747	SBB DINING CAR	Z	56.50	8931	Z TRACK BUMPER W/LIGHT	Z	11.50
8748	SBB 3RD CL EXPRESS COACH	Z	39.95	8939	Z COLOR LIGHT HOME SIGNAL	Z	28.00
8749	SBB EXPRESS BAGGAGE CAR	Z	39.95	8940	Z HOME SIGNAL W/SEMAPHORE	Z	55.00
8750	DB 1ST/2ND CL LOCAL COACH	Z	29.85	8945	Z UNIVERSAL RELAY	Z	33.00
8751	DB 2ND CL LOCAL COACH	Z	29.85	8946	Z MANUAL SIGNAL CONTROLLER	Z	17.50
8752	DB LOCAL BAGGAGE CAR	Z	29.85	8947	DOUBLE POLE/DOUBLE THROW RELAY	Z	41.00
8753	DB 1ST/2ND CL LOCAL COACH	Z	34.75	8950	BUILDING INTERIOR LIGHTING KIT	Z	6.75
8754	DB 2ND CL LOCAL COACH	Z	34.75	8952	SET OF AUTOS PK/4	Z	8.85
8755	DB 2ND CL COACH W/BAGGAGE AREA	Z	38.50	8953	LIGHT BULB INSERT	Z	3.75
* 8757	DB BAGGAGE CAR	Z	29.50	8954	INSUL.®. RAIL JOINERS PK/30	Z	6.35
8758	DB IC 1ST CL EXPRESS COACH	Z	33.50	8955	DOUBLE ARM PANTOGRAPH	Z	11.75
8759	DB IC 2ND CL EXPRESS COACH	Z	33.50	8956	SINGLE ARM PANTOGRAPH	Z	14.75
8768	DB LANGENSCHWALBACHER CAR SET	Z	190.00	8957	STREET LIGHT	Z	12.50
8771	DB ICE COACH	Z	81.00	8958	STATION LIGHT	Z	12.50
8772	DB IC 1ST CL EXPRESS COACH	Z	35.50	8959	PARK LIGHT	Z	11.75
8773	DB IC 2ND CL EXPRESS COACH	Z	35.50	8961	STATION PLATFORM KIT	Z	15.50
8774	DB IC BORD RESTAURANT CAR	Z	47.85	8962	RURAL STATION KIT	Z	16.00
* 8776	DB TRACK MAINTENANCE CAR SET	Z	149.00	8970	RURAL STATION KIT	Z	21.00
8777	ORIENT EXPRESS SLEEPING CARS	Z	159.00	8971	RURAL FREIGHT SHED KIT	Z	16.50
8778	ORIENT EXPRESS LOUNGE CAR	Z	57.00	8972	CONTAINER TERMINAL SET	(D) Z	23.50
8780	DB 2ND CL CITY BAHN COACH	Z	36.50	8974	Z GAUGE RERAILER	Z	2.35
8781	DB 1ST/2ND CL CITY BAHN COACH	Z	36.50	8975	Z ARCHED BRIDGE 8-5/8"	Z	12.75
8782	DB 2ND CL CITY BAHN COMM CAR W/BAGG.	Z	71.00	8976	Z BRIDGE RAMP STR. 4-3/8" PK/2	Z	9.99
* 8784	SOUTHERN PACIFIC COACH	Z	35.00	8977	Z BRDG RAMP CUR 5-3/4" R. PK/2	Z	9.99
* 8785	SOUTHERN PACIFIC DINING CAR	Z	35.00	8978	Z APPROACH RAMP PILLAR SET	Z	12.50
* 8787	SOUTHERN PACIFIC VISTA DOME CAR	Z	37.00	8979	Z BRIDGE PILLAR SET PK/5	Z	6.80
* 8788	SOUTHERN PACIFIC BAGGAGE CAR	Z	35.00	8980	2-STALL LOCOMOTIVE SHED KIT	Z	56.00
* 8789	SOUTHERN PACIFIC OBSERVATION CAR	Z	37.00	8981	1-STALL LOCOMOTIVE SHED KIT	Z	45.85
8802	TRACK CLEANING CAR	Z	111.00	8982	COALING STATION KIT	Z	19.75
8803	DB CL 24 2-6-0 LOCOMOTIVE	Z	142.00	8983	3-STALL ROUNDHOUSE KIT	Z	96.00
8804	DB CL 260 DIESEL LOCOMOTIVE	Z	117.00	8985	FREIGHT STATION ACCESSORIES	Z	16.00
8805	DB CL 89 0-6-0T LOCOMOTIVE	Z	112.00	8986	RIGHT-OF-WAY DETAIL SET	Z	18.75
* 8806	DB CL 78 4-6-4T STEAM LOCOMOTIVE	Z	278.00	8987	Z GAUGE BRUSH SET	Z	2.50
† 8807	SOUTHERN 2-8-2 LOCOMOTIVE	Z	215.00	8988	Z GAUGE BRUSH SET	Z	2.50
† 8808	NEW YORK CENTRAL 2-8-2 LOCO	Z	215.00	8989	Z GAUGE BRUSH SET	Z	2.50
* 8809	SOUTHERN PACIFIC DAYLIGHT F7 DIESEL LOCO	Z	188.00	8991	Z TRACK BUMPER	Z	3.75
8811	DB CL 144 ELECTRIC LOCO	Z	210.00	8992	Z TRK CROSSING GATE SET	Z	77.00
8816	DB CL 798 RAILBUS	Z	115.00	8993	Z TRK REVERSE LOOP KIT	Z	21.65
8817	DB CL 998 RAILBUS TRAILER	Z	44.00	8994	AUTOMATIC TRANSFER TABLE	Z	299.00
8820	DB CL 221 DIESEL LOCOMOTIVE	Z	177.00	8995	CATENARY SET FOR 8994	Z	38.75
8822	DB CL 194 ELECTRIC LOCO	Z	265.00	8996	WATER TOWER KIT	Z	13.75
8823	SBB CL Re 4/4 ELECTRIC LOCO	Z	236.00	8997	TURNABLE EXTENSION SET	Z	48.95
8824	DB CL 194 ELECTRIC LOCO	Z	265.00	8998	AUTOMATIC TURNABLE	Z	375.00
* 8825	DB CL 144 ELECTRIC LOCOMOTIVE	Z	239.00	8999	Z TRACK NAILS PK/100	Z	2.25
* 8826	DB CL 151 ELECTRIC LOCOMOTIVE	Z	239.00	15701	91/92 HO, Z, 1 CATALOG/PRICE LIST	P	9.95
8827	DB CL 41 2-8-2 LOCOMOTIVE	Z	214.00	* 15800	1991 NEW ITEMS BROCHURE	P	N/C
8838	DB CL 139 ELECTRIC LOCO	Z	210.00	15900	SCHEMATICS/PARTS MANUAL	S	67.50
8839	DB CL 110 ELECTRIC LOCO	(D) Z	210.00	16311	89/90 METALL CATALOG	M	1.40
8840	DB CL 140 ELECTRIC LOCO	Z	195.00	16601	88/89 DIGITAL BROCHURE	P	N/C
8841	DB CL 110 ELECTRIC LOCO	Z	210.00	17441	91/92 PRIMEX CATALOG	P	1.40
8842	DB CL 111 ELECTRIC LOCO	(D) Z	177.00	19001	MINI CLUB SCREWDRIVER 2MM	S	2.80
8843	DB CL 111 ELEC LOCO	Z	205.00	19002	HO SCREW DRIVER 2.9MM	S	2.00
8847	SBB CL Re 4/4 ELECTRIC LOCO	Z	236.00	19003	SOCKET WRENCH 3.0MM	S	3.00
8848	DB CL 120.1 ELECTRIC LOCO	Z	195.00	19004	SOCKET WRENCH 3.5MM	S	3.00
8849	SBB CL Ae 6/6 ELECTRIC LOCO	Z	218.00	19005	TOOL SET AND CASE	S	14.95
8851	SBB CL Ae 3/6 ELECTRIC LOCO	Z	238.00	19032	STICKER "MARKLIN CROCODILE" 10/PK.	S	4.00
8853	DB CL 120 ELECTRIC LOCO	(D) Z	189.00	19033	STICKER "I LOVE MARKLIN" 10/PK.	P	4.00
8854	DB CL 103 ELECTRIC LOCO	Z	195.00	19035	STICKER "ICH DAMPFE DIGITAL" 10/PK.	P	4.00
8855	DB CL 111 ELECTRIC LOCO	(D) Z	178.00	19036	STICKER "MARKLIN LOCO" 10/PK.	P	4.00
8856	SBB CL Be 6/8 ELECTRIC LOCO	Z	279.00	19051	INSIDE WINDOW STICKER	P	5.00
8858	DB CL 151 ELECTRIC LOCO	(D) Z	167.00	* 19052	ALPHA INSIDE SIGN (24" x 8")	P	7.00
† 8860	SANTA FE F7 DIESEL LOCO	Z	178.00	19053	METAL INSIDE SIGN (24" x 8")	P	7.00
† 8861	SOUTH. PACIFIC F7 DIESEL LOCO	(D) Z	178.00	19054	DIGITAL SIGN (24" x 8")	D	7.00
† 8863	BURL. NORTH. F7 DIESEL LOCO	(D) Z	178.00	19098	RING BINDER FOR MAGAZINE	S	18.95
8864	DB CL 260 DIESEL LOCOMOTIVE	Z	115.00	19577	DIGITAL CARRIER BAG 45 x 56 CM PK/25	P	7.00
8865	DB CL 361 DIESEL LOCOMOTIVE	Z	119.00	20001	COUPLER PK/10	S	3.00
8866	DB CL V160 DIESEL LOCO	Z	210.00	20068	ARMATURE	S	19.35
8867	DB CL 103 ELECTRIC LOCO	Z	205.00	20157	SLIDER	S	2.65
8870	KING LUDWIG CL S 3/6 LOCO	Z	239.00	20214	COUPLER LONG SHANK PK/2	S	5.30
8871	DB ICE TRAIN	Z	569.00	20293	ARMATURE F/3021	S	19.35
8878	DB CL 218 DIESEL LOCO	Z	175.00	20381	TRUCK COUPLING F/3005-27+	S	5.30
8879	DB CL 218 DIESEL LOCO	Z	175.00	20580	ARMATURE F/3046-47	S	19.35
8880	DB CL 218.217 DIESEL LOCO	(D) Z	189.00	20780	PANTOGRAPH, OLD STYLE	S	19.35
8884	DB CL 050 2-10-0 LOCO	Z	265.00	20824	REVERSE UNIT	S	19.35
8885	DB CL 003 4-6-2 LOCO	Z	199.00	20989	COUPLER FOR 3016 PK/2	S	5.30
8892	K.BAY.STS.E. 4-6-2 LOCO	Z	210.00	21005	COUPLER FOR 4018 PK/2	S	8.00
8893	DB CL 18.4 4-6-2 LOCO	Z	205.00	21128	COUPLER WITH SPRING PK/2	S	8.00
8895	DB CL 74 2-6-0T LOCO	Z	125.00	21166	COUPLER FOR 3021 PK/2	S	5.30
8896	DB CL 86 2-8-2T LOCO	Z	205.00	21201	SLIDER	S	4.00
8899	DB CL 038 4-6-0 LOCO	Z	179.00	21376	SUB 29847	S	5.30
8911	Z CATENARY MAST PK/10	Z	23.50	21377	COUPLER FOR 21376 PK/4	S	1.20
8912	Z CATENARY FEEDER MAST	Z	6.75	21411	COUPLER PK/2	S	5.30
8913	Z CATENARY BRIDGE MAST PK/10	Z	23.50	21484	COUPLER PK/2	S	2.70
8914	Z CATENARY TOWER MAST PK/10	Z	36.50	21486	FIELD COIL FOR 3028-34-35 +	S	10.75
8918	SET OF TRUCKS 2/PK	Z	8.95	21583	FRONT COUPLER 3060-3129 + PK/2	S	5.30
8921	Z CATENARY INSULATORS PK/10	Z	6.75	21586	REAR COUPLER FOR 3060-62 PK/2	S	5.30
				21622	REAR COUPLER 3060-3129 PK/4	S	2.80

ITEM #	DESCRIPTION	SCALE	PRICE	ITEM #	DESCRIPTION	SCALE	PRICE
21708	COUPLER FOR 3050 PK/2	S	2.70	78612	WOOD SCREW F/CTRL BX PK/10	S	3.00
21745	ARMATURE	S	19.35	82513	88 INT'L SERIES-AUSTRALIA	H	39.95
21773	COUPLER FOR 3038 PK/2	S	2.70	82514	88 INT'L SERIES-NETHERLANDS	H	39.95
21783	COUPLER FOR 3055-63-66, PK/4	S	2.80	82515	88 INT'L SERIES-ITALY	H	39.95
21842	COUPLER F4631-35-3315 + 2/PK	S	2.70	82553	88 INT'L SERIES-AUSTRIA	Z	24.50
21843	COUPLER PK/4	S	1.20	82554	88 INT'L SERIES-BELGIUM	Z	24.50
21929	COUPLER SHANK PK/2	S	2.70	82555	88 INT'L SERIES-U.S.A.	Z	24.50
21951	COUPLER FOR 3071 PK/2	S	8.00	85878	THYSSENSTAHL TELESCOPING CAR (L)	1	425.00
21954	3071 COUPLER SHANK LONG PK/2	S	5.30	85893	PEINE-SALZGITTER TELESCOPING CAR (L)	1	425.00
22049	REVERSE UNIT FOR 3071	S	39.95	87288	EXTENSION SET FOR 7288	S	10.75
22218	FIELD WINDING	S	10.75	88125	'SPIRITS OF FRANCE' 3 CAR SET	Z	67.50
22220	FIELD WINDING	S	10.75	91710	CONTROL BOX FOR CRANE	S	19.35
22313	COUPLER F/3054 3357-58 4/PK	S	2.80	99900	RED PAINT 1.75 OZ.	S	4.00
22418	COUPLER W/SPRING PK/2	S	5.30	99901	BLACK PAINT 1.75 OZ.	S	4.00
22532	COUPLER W/SPRING PK/2	S	8.00	99902	CREAM PAINT 1.75 OZ	S	4.00
22897	TELEX COUPLER HOOK F/3096 PK/4	S	1.20	99903	GREEN PAINT 1.75 OZ	S	4.00
22924	TELEX COIL F/3096	S	19.35	99904	BLUE PAINT 1.75 OZ	S	4.00
22970	REVERSE UNIT F/3031/47-65	S	39.95	99905	SILVER PAINT 1.75 OZ.	S	4.00
23139	FIELD WINDING	S	10.75	99906	BURGUNDY PAINT 1.75 OZ.	S	4.00
23144	ARMATURE-ROUND COMMUTATOR	S	19.35	99907	GOLD PAINT 1.75 OZ	S	4.00
23755	FIELD COIL F/3106-51	S	6.65	99908	ORANGE PAINT	S	4.00
23846	PANTOGRAPH	S	19.35				
24166	PANTOGRAPH	S	19.35				
24281	COUPLER F/3106	S	2.65				
24456	FRONT COUPLER F3309 PK/2	S	1.40				
24457	FRONT COUPLER F3309 PK/10	S	3.00				
24460	REAR COUPLER F3309 PK/4	S	2.80				
24461	REAR COUPLER F3309 PK/4	S	2.80				
24800	PANTOGRAPH F3/67	S	10.75				
24810	COUPLER F3323-28-30 4/PK	S	2.80				
25069	PANTOGRAPH FOR 3350-3650	S	10.75				
25220	REVERSE UNIT F3300 SERIES	S	26.65				
25445	PANTOGRAPH FOR 3371	S	19.35				
25530	PANTOGRAPH	S	10.75				
25640	PANTOGRAPH FOR 3125	S	10.75				
25783	PANTOGRAPH FOR 3329	S	6.65				
25827	PANTOGRAPH	S	10.75				
25953	PANTOGRAPH	S	19.35				
26906	BULB FOR 8871	S	10.75				
27150	PICKUP SHOE FOR 4228	S	10.75				
27214	COUPLER FOR 4228 2/PK.	S	8.00				
28049	PANTOGRAPH FOR 3330-3160	S	19.35				
29847	COUPLER FOR 3065-3131-41	S	2.65				
30256	PASSENGER TRUCK FOR 4076 PK/2	S	21.50				
30339	PASSENGER TRUCK FOR 4026 PK/2	S	21.50				
30417	PASSENGER TRUCK FOR 4049 PK/2	S	13.70				
30547	PASSENGER TRUCK FOR 4066 PK/2	S	21.50				
31051	PICKUP SHOE FOR 4103	S	10.75				
31100	PICKUP SHOE FOR 4160	S	6.65				
31101	PANTOGRAPH FOR 4153	S	19.35				
32136	BOOM SUPPORT FOR 4671 PK/2	S	2.70				
32289	TRUCK FOR 4563 PK/2	S	21.50				
32339	PASSENGER TRUCK FOR 4624 PK/2	S	13.70				
32399	COUPLER 4650 PK/2	S	5.30				
32402	COUPLER 4632 PK/2	S	5.30				
32540	COUPLER 4067 + PK/2	S	2.70				
33545	BOOM SUPPORT FOR 8621 PK/2	S	5.30				
32570	TRUCK FOR 4574 PK/2	S	21.50				
35007	M-TRACK RAIL JOINER PK/10	S	3.00				
35786	RAIL JOINER FOR K TRACK PK/10	S	3.00				
36705	Z GAUGE RAIL JOINERS PK/10	S	3.00				
40619	HOOK FOR 7051 CRANE	S	2.65				
40625	CRANE MAGNET	S	26.65				
41494	PICKUP SHOE FOR PASSENGER CAR	S	6.65				
42788	BRIDGE ASSY. FOR 8998	S	206.00				
60000	BULB CARTRIDGE CLEAR PK/2	S	5.30				
60001	BULB CARTRIDGE RED PK/2	S	5.30				
60002	BULB CARTRIDGE GREEN PK/2	S	5.30				
60007	BULB FOR 3371 RED PK/2	S	5.30				
60008	BULB PK/2	S	5.30				
60010	BULB MINI-SCREW CLEAR PK/2	S	5.30				
60015	BULB BAYONET BASE CLEAR PK/2	S	5.30				
60019	BULB MINI-SCREW CLEAR 1.5 PK/2	S	5.30				
60020	BULB MINI-SCREW CLEAR LG PK/2	S	5.30				
60030	BRUSHES FOR FLAT ARMATURE PK/2	S	2.65				
60146	BRUSHES FOR ROUND ARM. PK/2	S	2.65				
60200	BULB MINI-CARTRIDGE CLEAR PK/2	S	5.30				
60201	BULB MINI-CARTRIDGE RED PK/2	S	5.30				
60202	BULB MINI-CARTRIDGE GREEN PK/2	S	5.30				
60204	BULB MINI-CARTRIDGE AMBER PK/2	S	5.30				
60210	BULB FOR 8896 ETC. PK/2	S	5.30				
60211	WHITE BULB	S	4.00				
61003	5-POLE ARMATURE	S	19.35				
61004	BULB 2/PK	S	5.30				
70081	Z GAUGE CAR WHEELS PK/4	S	10.60				
70154	COUPLER PK/2	S	2.70				
70156	COUPLER PK/2	S	5.30				
70157	COUPLER PK/2	S	5.30				
70158	COUPLER PK/2	S	2.70				
70163	CLOSE COUPLER (#7203) 2/PK	S	2.70				
70412	COUPLER PK/4	S	2.80				
70420	Z GAUGE COUPLER PK/4	S	2.80				
76568	Z COUPLER SPRING PK/10	S	3.00				