

märklin®

RETAIL PRICE LIST

(Effective April 1, 1992)

All Prices are Listed at Suggested Retail

Item 2626

ACCT. #
PETER
NEWSALES REP.
AS OF 2/92

RETAIL SALES POLICY

Märklin, Inc. sells only through authorized Märklin dealers. Märklin, Inc. does not sell directly to individuals. To locate the Authorized Märklin Dealer nearest to you, please write to: Märklin, PO Box 51559, New Berlin, WI 53151-0559 or call 1-800-825-0888.

WARRANTY

Märklin, Inc. warrants that its products are free from defects in materials and workmanship for a period of one year from the date of purchase. If there is any defect, return that item with proof of purchase to your authorized Märklin Dealer. Defects arising from abuse, improper maintenance or misuse are not covered in this warranty. This warranty applies ONLY to purchases made through Authorized Dealers in North America.

DIGITAL WARRANTY

All locomotive decoder panels (2-rail and 3-rail) are sold only to Authorized Digital dealers for installation. The 3-rail decoder panels will be covered under Märklin, Inc.'s limited warranty only if they are installed by an Authorized Digital Dealer, or by Märklin, Inc. The 2-rail decoder panel will be covered under Märklin, Inc.'s warranty only for its electronic functions. The 2-rail decoder panel will not be covered under warranty for its installation or for its compatibility with the locomotive in which it is being installed.

SYMBOLS

(D) Special U.S. Prototypes
(E) Discontinued Item
(L) Export Item
(P) Limited Run Item
(*) Primex Item
(HOB) 1992 New Items
(HF) Hobby Program
(HF) High Efficiency

SCALE

H - HO Gauge
Z - Z Gauge
1 - 1 Gauge
D - Digital
M - Metall
S - Spare Part
A - Alpha

NOTE: Availability of Discontinued, Export, and Limited Run items cannot be guaranteed.

ABBREVIATIONS

BLS Bern Lötschberg Simplon Railroad
CFL Luxemburg State Railways
DB Germany Federal Railroad
DBP German Federal Postal System
DR German State Railroad (East Germany)
DRG German State Railroad (1920-1945)
DRG Alsace-Lorraine German State Railroad Alsace-Lorraine Deutsche Reichsbahn Elsass-Lothringen
DSB Danish State Railways
FS Italian State Railways
GHMFFE Grand Ducal Mecklenburg Friedrich Franz Railroad (Grossherzoglich Mecklenburgischen Friedrich-Franz-Eisenbahn)
K.BAY.ST.E. Royal Bavarian State Railroad
KPEV Royal Prussian Railroad Administration
K.W.ST.E. Royal Württemberg State Railways
KSSTE Royal Saxon State Railways (Königlich Sächsischen Staatseisenbahnen)
NS Dutch Railways
NSB Norwegian State Railways
OBB Austrian Federal Railways
SBB Swiss Federal Railways
SJ Swedish Railways
SNCB Belgian State Railways
SNCF French State Railways
SOB Swiss Southeast Railroad (Südostbahn)

***SEE SPECIAL INSERT FOR
NON-CATALOGED ITEMS AVAILABLE**

Available From:

STORE
COPY

MÄRKLIN'S PRODUCT LINES

1 - 1:32 Scale • 1991/92 Catalog #15701
HO - 1:87 Scale • 1991/92 Catalog #15701
Z - 1:220 Scale • 1991/92 Catalog #15701

DIGITAL - An electronic model railroad control system using digital circuitry which allows control of up to 80 locomotives and 256 accessories with the option of using a personal computer for advanced semi-automatic/automatic train routing and scheduling.

DELTA - Multi-train control system for Märklin HO for independent control of up to 4 or 5 locomotives. Catalog #16641

ALPHA - HO Complete Children's Interactive Trains System. Catalog #16682.

METALL - High quality, all metal construction kits. Catalog #16311.

HAMO - HO, two-rail DC system. Line includes locomotives and conversion wheel sets for cars.

PRIMEX - Special limited assortment line compatible with Märklin's HO-Line. Includes Locomotives, Rolling Stock, Building Structures and Scenery Accessories. Catalog #17446. See enclosed special insert for more details.

NEW ITEMS BROCHURE - 1992 New Items Brochure #15810.

HOBBY - Entry level program into Märklin's HO Model Railroading. Catalog #16511.

AMERICAN Z - See enclosed special insert.

SPECIAL EXPORT PROGRAM

Märklin's Special Export Models Program consists of non-cataloged special models manufactured for certain countries outside of Germany. There is usually only one production run made and, based on demand, they can become limited in quantity. These export models are distributed in the first year to all export countries (Germany is excluded). In subsequent years the remaining inventory is available on a worldwide basis. In some cases the items may be completely sold out at the factory and can no longer be ordered. A separate price list and brochure is available. Catalog #17591.

Märklin, Inc. maintains no responsibility for inadvertent errors in this price list. All prices are subject to change without notice. All items are invoiced at prices in effect at the time of shipment.

Märklin, Inc. PO Box 51319, 16988 W. Victor Road, New Berlin, WI 53151-0319

Märklin, Inc. is the American Subsidiary of Gebr. Märklin & Cie. GmbH, Germany and Exclusive Distributor in North America for Märklin Products

ITEM #	DESCRIPTION	SCALE	PRICE	ITEM #	DESCRIPTION	SCALE	PRICE
0050	50TH ANNIVERSARY HO SET (L)	H	495.00	1691	SIGNAL TOWER	(P) H	6.50
0100	DIGITAL DECODER SOLDERING IRON	S	46.00	1692	STATION PLATFORM	(P) H	9.75
0101	VHS VIDEO "THE GOTTHARD BAHN"	P	62.00	1693	POST OFFICE	(P) H	12.95
0102	VHS VIDEO "RAILWAYS OF THE RHINE"	P	46.95	1694	CHALET	(P) H	9.95
0103	VHS VIDEO "EUROPEAN EXPRESS" Vol. 3	P	37.95	1695	RURAL HOTEL	(P) H	16.50
0104	VHS VIDEO "THE AUSTRIAN RR"	P	72.00	1696	TRACK SCALE	(P) H	11.50
0107	VHS VIDEO "THE GERMAN RR TODAY"	P	62.00	1697	WATER TOWER	(P) H	14.50
0108	VHS VIDEO "EUROPE ON RAILS"	P	72.00	1698	DRIVE-UP DINER	(P) H	11.50
0109	VHS VIDEO "SWISS RAILWAYS"	P	46.95	1699	MERRY-GO-ROUND MOTORIZED	(P) H	25.95
0110	VHS VIDEO "EUROPEAN EXPRESS" Vol. 2	P	37.95	1703	FIRE STATION	(P) H	13.95
0111	VHS VIDEO "THE BLACK FOREST RR"	P	62.00	1704	PUBLIC SWIMMING POOL	(P) H	10.50
0113	VHS RHATISCHE BAHN	P	46.95	1705	SAW MILL	(P) H	10.50
0114	VHS ALPINE EXPRESS	P	46.95	1706	TRACT HOUSES	(P) H	7.95
0115	VHS VIDEO "EUROPEAN EXPRESS" Vol. 4	P	37.95	1707	KINDERGARTEN	(P) H	8.95
0116	VHS VIDEO "EUROPEAN EXPRESS" Vol. 5	P	37.95	1708	MINEHEAD BUILDING	(P) H	11.95
0117	VHS VIDEO "EUROPEAN EXPRESS" Vol. 6	P	37.95	1709	LIQUID GAS TANK	(P) H	11.95
0118	VHS RAILWAYS OF SOUTHERN GERMANY	P	46.95	1714	FACTORY	(P) H	14.95
0119	VHS VIDEO "EUROPEAN EXPRESS" Vol. 8	P	37.95	1719	32 PLUGS/8 SOCKETS	(P) H	10.50
0120	VHS BAVARIAN CAB RIDE	P	37.95	1720	STATION PLATFORM LIGHT	(P) H	11.95
0121	VHS THE ORIENT EXPRESS	P	33.50	1721	STREET LIGHT	(P) H	10.95
0209	M TRACK STENCIL	H	19.95	1722	STREET LIGHT	(P) H	12.75
0210	K TRACK STENCIL	H	19.95	1723	DISTRIBUTION STRIPS	(P) H	6.75
0211	K/M CATENARY STENCIL	H	18.95	1724	SET OF STREET LIGHTS	(P) H	26.95
0212	Z TRACK STENCIL	Z	19.95	1725	STREET LIGHT	(P) H	8.00
0225	COACH INTERIOR	H	10.95	1727	STREET LAMP	(P) H	8.95
0226	SEATED PASSENGERS PK/10	H	9.95	1728	ARC LAMP W/LATTICE MAST	(P) H	10.75
0230	M TRACK PLANNING KIT (HOB)	H	28.00	1729	LIGHTING KITS	(P) H	7.75
0231	K TRACK PLANNING KIT	H	28.00	1730	RAILROAD WORKERS	(P) H	6.75
0232	Z TRACK PLANNING KIT	Z	28.00	1731	SIX PASSENGERS	(P) H	6.75
0241	SMOKE FLUID 1.15 OZ. PK/5	S	13.50	1732	ANIMALS	(P) H	6.75
0292A	REVISED "0292" Z TRACK PLANNING BOOK	Z	12.95	1733	CASES, BARRELS, ACCESSORIES	(P) H	3.75
0303	DIGITAL BOOK ENGLISH TEXT	D	19.95	1734	HALF-TIMBERED HOUSE	(P) H	7.50
0322	Z/mini CLUB BOOK GERMAN TEXT	Z	35.00	1735	WATER TOWER	(P) H	8.95
0323	MÄRKLIN 1 GAUGE HANDBOOK	1	57.00	1736	PEDESTRIAN OVERPASS	(P) H	3.50
0324	1 GAUGE BOOK GERMAN TEXT (D)	1	33.50	1737	TUNNEL	(P) H	12.95
0327	MÄRKLIN RR & SCENERY GERMAN TEXT	H	35.00	1738	TUNNEL	(P) H	8.95
0328	ADVANCED MÄRKLIN RR GERMAN TEXT	H	35.00	1740	TWELVE PINE TREES	(P) H	12.95
0342	M SIGNAL MANUAL	H	10.50	1741	SIX PINE TREES	(P) H	10.95
0356	CROCODILE BOOK GERMAN TEXT	P	31.50	1743	GAS LIGHT	(P) H	8.95
0368	K SIGNAL MANUAL	H	14.50	1744	FOUR TREES	(P) H	12.95
0403	BRIEFCASE LAYOUT	Z	789.00	1745	FOUR TREES	(P) H	13.95
0406	EUROPEAN STYLE Z LAYOUT	Z	1085.00	1747	HALF-TIMBERED HOUSE	(P) H	14.00
0408	WINTER SCENE Z LAYOUT	Z	789.00	1747A	SCENIC MATERIAL	(P) H	3.95
0428	RHEINGOLD POSTER	P	5.95	1748	GRASS MAT	(P) H	8.50
0430	TRAIN COMPOSITION POSTER	P	3.95	1750	STATION	(P) H	11.50
0501	"WALDENBURG" HO LAYOUT	H	1995.00	1751	YARD TOWER	(P) H	6.75
0509	US STYLE Z LAYOUT	Z	759.00	1752	MODERN RAILWAY STATION	(P) H	13.95
0702	K/M TRACK PLAN BOOK	H	35.00	1753	PASSENGER PLATFORM	(P) H	6.75
0712	M-TRACK PLAN BOOK-BEGINNER (ENGLISH)	H	19.95	1754	YARD TOWER	(P) H	4.50
0713	M-TRACK PLAN BOOK-BEGINNER (FRENCH)	H	19.95	1755	TOWER MAST LAMP	(P) H	11.95
0716	HO ELECTRICAL MANUAL	H	32.50	1756	STATION	(P) H	18.00
0722	K-TRACK PLAN BOOK-BEGINNER (ENGLISH)	H	19.95	1757	YARD TOWER	(P) H	9.50
0723	K-TRACK PLAN BOOK-BEGINNER (FRENCH)	H	19.95	1758	TRAIN SHED	(P) H	12.00
0733	MÄRKLIN HO SERVICE MANUAL	H	14.95	1759	TUNNEL PORTAL (2 PIECES)	(P) H	4.95
1004	BASIC CONSTRUCTION SET M30	M	102.00	1760A	RAILWAY STATION	(P) H	6.50
1005	BASIC CONSTRUCTION SET M50	M	142.00	1761	SINGLE HOUSE	(P) H	10.75
1006	BASIC CONSTRUCTION SET M60	M	235.00	1761A	ENGINE HOUSE	(P) H	7.95
1007	ROBOTICS CONSTRUCTION SET	M	446.00	1762	ARCH BRIDGE	(P) H	3.95
1008	SOLAR CONSTRUCTION SET	M	172.00	1763	TRUSS BRIDGE	(P) H	3.95
1016	EXTENSION SET E30	M	71.50	1764	CURVED BRIDGE	(P) H	3.95
1017	EXTENSION SET E50	M	112.00	1765	BRIDGE PILLARS	(P) H	3.95
1018	METALL AC/DC MOTOR (D)	M	58.00	1766	GROUND COVER	(P) H	7.50
1022	MOTOR FOR 9-16 VOLTS DC	M	39.95	1767	FOUR SCENERY MOTIVES	(P) H	15.75
1030	TRACTOR GIFT SET	M	36.00	1769	GRAVEL LOADER	(P) H	7.95
1031	TRACTOR W/TRAILER GIFT SET	M	58.00	1770	PALACE	(P) H	11.95
1033	CHOPPER GIFT SET	M	36.00	1771	WATER MILL	(P) H	6.50
1035	CABLE CAR-GIFT PACKAGE (D)	M	46.00	1772	BUNGALOW	(P) H	3.95
1040	EXPANSION SET 'NUTS & BOLTS'	M	16.95	1773	SMALL HOUSE	(P) H	3.95
1041	EXPANSION SET 'FLAT GIRDERS'	M	23.95	1774	ENGINE HOUSE-2 STALLS	(P) H	14.50
1042	EXPANSION SET 'ANGLE GIRDERS'	M	35.00	1775	CHURCH	(P) H	9.50
1043	EXPANSION SET 'PLATES'	M	25.00	1776	GAS STATION	(P) H	5.95
1044	EXPANSION SET 'TIRES W/RIMS'	M	29.50	1777	INN	(P) H	6.95
1045	EXPANSION SET 'GEARS'	M	35.50	1778	CABLE CAR SET	(P) H	17.95
1047	EXPANSION SET 'CHAIN GEARS'	M	31.95	1779	ROW HOUSES	(P) H	10.50
1075	ANNIVERSARY CONSTRUCTION SET (L)	M	219.00	1780	QUARRY BUILDINGS	(P) H	11.95
1077	MÄRKLIN TRAC THEME SET	M	120.00	1781	COALING STATION	(P) H	8.50
1084	METALL GO-KART SET	M	146.00	1782	BUNGALOW	(P) H	6.75
1689	CASTLE (P)	H	21.00	1783	LINESIDE ACCESSORY KIT	(P) H	5.50
1690	TRAIN STATION (P)	H	13.50	1784	GARDEN FENCE	(P) H	5.60

Märklin, Inc. PO Box 51319, 16988 W. Victor Road, New Berlin, WI 53151-0319

American Subsidiary of Gebr. Märklin & Cie. GmbH, Germany and Exclusive Distributor in North America for Märklin Products

ITEM #	DESCRIPTION	SCALE	PRICE	ITEM #	DESCRIPTION	SCALE	PRICE
1785	CEMENT TRUCK	(P) H	9.50	2511	ALPHA 'RADAR' EXTENSION SET (D)	A	138.00
1786	TRAIN WASHING FACILITY	(P) H	5.50	2512	ALPHA 'CRANE' EXTENSION SET (D)	A	159.00
1787	LINESIDE WORKER'S HOUSE	(P) H	6.50	2512A	'90 INT'L SERIES-FRANCE	Z	24.50
1788	EIGHT VEHICLES	(P) H	9.95	2514A	89 INT'L SERIES - NETHERLANDS	Z	24.50
1791	NURSERY BUILDINGS	(P) H	5.50	2515	ALPHA MACHINES MULTIFUNCTION CAR	A	42.00
1792	COTTAGE & BARN	(P) H	5.60	2516A	89 INT'L SERIES - CANADA	Z	24.50
1794	SCENIC MATERIALS	(P) H	14.95	2517	ALPHA LOW SIDE CAR	A	32.00
1795	WIND MILL	(P) H	9.50	2518	ALPHA TRAVELLER A	A	34.95
1796	SIX FLOWERING BUSHES	(P) H	9.95	2519	ALPHA TRAVELLER F	A	34.95
1797	CHAPEL	(P) H	8.75	2530	ALPHA LOCO A	A	169.00
1798	DAIRY BARN	(P) H	5.95	2550A	90 INT'L SERIES - JAPAN	H	39.95
1799	SIX TREES	(P) H	14.95	2551A	89 INT'L SERIES - GREAT BRITAIN	H	39.95
1892	FARM MACHINERY SET	(P) H	79.00	2552A	90 INT'L SERIES - SWEDEN	H	39.95
1894	DELIVERY TRUCK SET	(P) H	79.00	2553A	89 INT'L SERIES - AUSTRIA	H	39.95
1895	STEAM ROLLER	(P) H	120.00	2556A	89 INT'L SERIES - CANADA	H	39.95
1896	LOCOMOBILE	(L) H	99.00	2561	ALPHA BIG RIG	A	32.95
1897	LOCOMOBILE	(L) H	99.00	2562	ALPHA JUMBO	A	35.50
1899	OLDTIMER TRUCK SET	H	68.50	2564	ALPHA RACING	A	38.50
2001	ALPHA TRACK 7-1/8" STRT PK/6	A	17.00	2565	ALPHA POWER UNIT	A	32.95
2006	ALPHA STRT TRACK BRIDGE SET	A	29.00	2566	ALPHA SPACE JET	A	22.00
2019	ALPHA TRACK BUMPER	A	7.50	2581	ALPHA EXPLORER	A	27.95
2021	ALPHA TRACK 14-1/8" R 30° PK/6	A	17.00	2582	ALPHA SCHUTTLE	A	55.00
2026	ALPHA CURVE TRK BRIDGE SET	A	29.00	2583	ALPHA POWER TRUCK	A	43.95
2031	ALPHA TRK 17-1/8" R 30° PK/6	A	19.95	2600	MÄRKLIN MAGAZINE SUBSCRIPTION 6/YR	P	6.00 ISSUE
2062	ALPHA TRK TURNOUT LEFT MANUAL	A	18.50	2601	DIGITAL STARTER SET (D)	D	965.00
2063	ALPHA TRK TURNOUT RIGHT MANUAL	A	18.50	2604	DIGITAL TURNOUTS R & L	D	139.00
2090	ALPHA FEEDER TRACK	A	8.95	2611A	Z WINTER LAYOUT BOARD	Z	165.00
2091	A-ADAPTER TRACK-M TRACK 7-1/8	A	6.00	2612	BACK ISSUE MÄRKLIN MAGAZINE	P	6.00
2200	K TRK 7-1/8" STRAIGHT PK/10	H	3.00/pc.	2612A	DIGITAL STARTER SET (D)	H	749.00
2201	K TRK 3-9/16" STRAIGHT PK/10	H	2.95/pc.	2613	MÄRKLIN HO COLLECTIBLE BOOK	H	35.00
2202	K TRK 1-3/4" STRAIGHT PK/10	H	2.90/pc.	2622A	BASIC DIGITAL SET (D)	H	599.00
2203	K TRK 1-3/16" STRAIGHT PK/10	H	2.80/pc.	* 2622B	GREENBERG'S MODEL RR WITH HO	P	19.95
2204	K TRK 7/8" STRAIGHT PK/10	H	2.75/pc.	2623	MÄRKLIN Z LAYOUT BOOK (SOFTBOUND)	Z	14.95
2205	K TRK 35-1/2" FLEX PK/10	H	13.50/pc.	2623A	"2623" (HARDBOUND)	Z	24.95
2206	K TRK 6-5/8" STRAIGHT PK/10	H	3.20/pc.	2627	DIGITAL SET 2-RAIL DC HO	D	795.00
2207	K TRK 6-1/8" STRAIGHT PK/10	H	3.20/pc.	↑ 2630	PASSENGER DEPOT	Z	11.50
2208	K TRK 1-3/8" STRAIGHT PK/10	H	2.75/pc.	↑ 2631	2-STORY RESIDENCE	Z	9.50
2209	K TRK 8-5/8" STRAIGHT PK/10	H	3.75/pc.	↑ 2632	FACTORY	Z	13.00
2210	K TRK 11-5/8" R 45° PK/10	H	3.85/pc.	↑ 2633	FEED MILL	Z	12.50
2221	K TRK 14-1/8" R 30° PK/10	H	3.00/pc.	↑ 2634	FREIGHT TERMINAL	Z	15.00
2223	K TRK 14-1/8" R 15° PK/10	H	2.95/pc.	↑ 2635	MINE HEAD	Z	14.00
2224	K TRK 14-1/8" R 7.5° PK/10	H	2.75/pc.	↑ 2637	COUNTRY CHURCH	Z	12.00
2229	K TRK CURVED CIRCUIT TRK 15	H	13.50	↑ 2638	RANCH HOUSE	Z	9.50
2231	K TRK 16-3/4" R 30° PK/10	H	3.55/pc.	↑ 2639	BARN	Z	10.00
2232	K TRK 16-3/4" R 22° 30' PK/10	H	3.40/pc.	↑ 2640	STORE FRONTS	Z	11.00
2233	K TRK 16-3/4" R 15° PK/10	H	3.20/pc.	2662	DIGITAL DEMO TRAIN SET (L) (D)	H	455.00
2234	K TRK 16-3/4" R 7° 30' PK/10	H	2.95/pc.	2664A	DIGITAL DB EXPRESS TRAIN	H	478.00
2235	K TRK 16-3/4" R 3° 45' PK/10	H	2.90/pc.	2665	DIGITAL DRG EXPRESS TRAIN (L) (D)	H	565.00
2239	K TRK CURVED CIRCUIT TRK 15	H	13.50	2670	MÄRKLIN PEN	P	1.25
2241	K TRK 21-3/4" R 30° PK/10	H	4.60/pc.	2675	USERS GUIDE TO DIGITAL SYSTEM	D	15.95
2251	K TRK 24-3/4" R 30° PK/10	H	4.60/pc.	2676A	SIG NEWSLETTERS VOL. 1 (89)	D	10.00
2257	K TRK CROSSING 14° 26'	H	31.00	2677A	SIG NEWSLETTERS VOL. 2 (90)	D	10.00
2258	K TRK CROSSING 45°	H	17.95	2687A	SIG NEWSLETTERS VOL. 3 (91)	D	12.00
2259	K TRK CROSSING 22° 30'	H	18.95	2690	DIGITAL DBP TRAIN SET (L) (D)	D	355.00
2260	K TRK DOUBLE SLIP REMOTE	H	63.50	2702	20TH ANNIVERSARY SET (L) (P) (D)	H	289.00
2261	K TRK TURNOUT R & L REMOTE	H	76.50	2704	STEEL MILL TRAIN (L) (P) (D)	H	210.00
2262	K TRK TURNOUT LEFT REMOTE PK/2	H	76.50	2847	SWISS FREIGHT TRAIN (E)	H	275.00
2263	K TRK TURNOUT RIGHT REMOTE PK/2	H	76.50	2859	DB DEMONSTRATION TRAIN (D)	H	359.00
2264	K TRK TURNOUT R & L MANUAL	H	36.50	2861	DB SUGAR BEET TRAIN (D)	H	275.00
2265	K TRK TURNOUT LEFT MANUAL PK/2	H	36.50	2862	DB DEMONSTRATION TRAIN (L) (D)	H	410.00
2266	K TRK TURNOUT RIGHT MANUAL PK/2	H	36.50	2864	DB EPOCH III EXPRESS TRAIN	H	445.00
2267	K TRK TURN CURVED R & L REMOTE	H	76.50	2865	DRG EXPRESS TRAIN (L) (D)	H	525.00
2270	K TRK TURNOUT 3-WAY REMOTE	H	66.50	* 2868	LUFTHANSA AIRPORT EXPRESS	H	539.00
2271	K TRK TURNOUT 35.6° R. R & L MANUAL	H	48.00	2890	FEDERAL POSTAL SET (L) (D)	H	325.00
2272	K TRK TURNOUT 35.6° R. LEFT PK/2	H	48.00	2907	SM FREIGHT STARTER SET (HOB)	H	175.00
2273	K TRK TURNOUT 35.6° R. RIGHT PK/2	H	48.00	* 2916	DELTA-SM. FREIGHT STARTER SET	H	199.00
2274	K TRK 35.6° R. 14° 26' PK/10	H	3.75/pc.	* 2964	DELTA-LG. FREIGHT STARTER SET	H	325.00
2275	K TRK DOUBLE SLIP MANUAL	H	48.75	2967A	LARGE FREIGHT STARTER SET (HOB)	H	295.00
2290	K TRK 7-1/8" STRAIGHT FEEDER	H	7.50	2987	DELUXE FRT STARTER SET W/K-TRK (D)	H	299.00
2291	K TRK ADAPTER 7-1/8" STRAIGHT 2/PK	H	7.00	3000	DB CL 89 0-6-0T LOCOMOTIVE (HOB)	H	93.00
2292	K TRK 7-1/8" STRAIGHT FEED W/CAP	H	10.00	3001	DB CL 163 ELECTRIC LOCOMOTIVE (HOB)	H	155.00
2293	K TRK 1-5/8" STRAIGHT PK/10	H	2.90/pc.	3002	DB CL E63 ELECTRIC LOCO (P)	H	129.00
2295	K TRK CONTACT TRACK SET	H	17.75	3003	DB CL 24 2-6-0 LOCO W/TENDER (HOB)	H	155.00
2297	K TRK 3/9/16" UNCOUPLER	H	24.00	3006	GERMAN POSTAL DIESEL LOCO (P)	H	145.00
2299	K TRK STRAIGHT CIRCUIT TRACK	H	13.50	3012	CHIEMGAU RAILBUS SET (P)	H	179.00
2401M	MILLER HIGH LIFE I (L)	Z	25.00	3016	DB CL 795 RAILBUS (HOB)	H	123.00
2402M	MILLER GENUINE DRAFT (L)	Z	25.00	3018	CL VT88/VB88 RAILBUS SET (D) (P)	H	99.00
2403M	MILLER LITE (L)	Z	28.00	3019	DB CL 218 DIESEL LOCO (P)	H	150.00
2404M	MILLER HIGH LIFE LADY (L)	Z	28.00	2510A	89 INT'L SERIES - SWITZERLAND	Z	24.50
2507	ALPHA STARTER SET	A	169.00	3032	DB CL 81 0-8-0T LOCO (HOB)	H	170.00

Märklin, Inc. PO Box 51319, 16988 W. Victor Road, New Berlin, WI 53151-0319

American Subsidiary of Gebr. Märklin & Cie. GmbH, Germany and Exclusive Distributor in North America for Märklin Products

ITEM #	DESCRIPTION	SCALE	PRICE	ITEM #	DESCRIPTION	SCALE	PRICE
3034	DB CL 141 ELECTRIC LOCOMOTIVE (HOB)	H	189.00	3353	DB CL 120.1 ELECTRIC LOCO	H	262.00
3037	DB CL 141 ELECTRIC LOCOMOTIVE (HOB)	H	189.00	3355	DB CL 111 ELECTRIC LOCO	H	238.00
3044	DB CL EA800 ELECTRIC SWITCHER	H	122.00	3357	DB CL 103 ELECTRIC LOCO	H	256.00
3049	DB CL 104 ELECTRIC LOCO	H	218.00	3358	DB CL 103 ELECTRIC LOCO	H	268.00
3053	DB CL 103 ELECTRIC LOCO (HOB)	H	235.00	3360	DB CL 111 ELECTRIC LOCO	H	239.00
3060	SANTA FE F7 DIESEL LOCO	H	155.00	3361	DB CL 151 ELECTRIC LOCO	H	259.00
3065	DB CL 260 DIESEL LOCO W/TELEX	H	175.00	3363	SNCF CL 16 ELECTRIC LOCO	H	265.00
3072	DB CL 212 DIESEL LOCO (HOB)	H	168.00	3366	DB CL 152 ELECTRIC LOCO	H	316.00
3074	DB CL 216 DIESEL LOCO (HOB)	H	168.00	* 3368	DB CL 118 ELECTRIC LOCO	H	449.00
3078	HENSCHEL DHG 500 DIESEL LOCO (HOB)	H	105.00	* 3370	DB CL 401 INTERCITY EXPRESS TRAIN SET	H	749.00
3082	DB CL 41 2-8-2 LOCO W/TENDER	H	258.00	3371	DB ICE TRAIN SET	H	835.00
3084	DB CL 050 2-10-0 LOCO W/TENDER	H	305.00	3372	DB CL 212 DIESEL LOCOMOTIVE	H	198.00
3085	DB CL 003 4-6-2 LOCO W/TENDER (HOB)	H	265.00	3373	DB CL 216 DIESEL LOCOMOTIVE	H	235.00
3087	GERMAN 0-6-0T LOCOMOTIVE (HOB)	H	85.00	* 3374	DELTA - DB CL 216 DIESEL LOCOMOTIVE	H	209.00
3088	HENSCHEL DHG 700C DIESEL LOCO (HOB)	H	122.00	3375	DB CL 216 DIESEL LOCOMOTIVE	H	198.00
3095	DB CL 74 2-6-0T LOCOMOTIVE (HOB)	H	142.00	3376	DB CL 628.2 DIESEL RAILCAR	H	406.00
3096	DB CL 86 2-8-2T LOCO W/TELEX (HOB)	H	265.00	3377	DB CL 212 DIESEL LOCOMOTIVE	H	198.00
3099	DB CL 038 4-6-0 LOCO W/TENDER (HOB)	H	199.00	3386	NS PTT POSTAL RAILCAR (E)	H	395.00
3106	DB CL 4-6-4T LOCOMOTIVE (D)	H	252.00	3387	DB CL 98.3 0-4-0T LOCOMOTIVE	H	295.00
3123	SNCF MICHELIN RAILBUS (E)	H	369.00	3388	NS PTT POSTAL RAILCAR (E)	H	315.00
3125	SBB CL R Be 2/4 RAILCAR (D)	H	325.00	3389	PTT POSTAL RAILCAR (D) (E) (L)	H	359.00
3128	BERLIN S-BAHN SET (HOB)	H	239.00	3390	DB CL 01.10 4-6-2 STEAM LOCO W/TENDER	H	398.00
3131	DB CL 361 DIESEL LOCO W/TELEX (HOB)	H	186.00	* 3391	DRG CL 03.10 STREAMLINED STEAM LOCO (HF)	H	379.00
3132	SJ DIESEL SWITCHER (E)	H	125.00	* 3396	DELTA DB CL 86 TANK LOCOMOTIVE	H	279.00
3133	SNCF CL 54 DIESEL LOCO	H	210.00	* 3428	DELTA DB CL 515 RAILCAR	H	289.00
3140	AUSTRIAN RAILBUS SET (E) (D)	H	169.00	* 3448	DB CL E70 ELECTRIC LOCOMOTIVE	H	539.00
3141	DB CL 260 DIESEL LOCO	H	160.00	* 3449	DR CL 204 ELECTRIC LOCOMOTIVE	H	289.00
3142	FS CL D236 DIESEL LOCO (L) (D)	H	147.00	3502	DRG BORSIG 2-6-8-0 LOCOMOTIVE (L)	H	495.00
3146	DB CL 236 DIESEL LOCO (D)	H	150.00	3504	DB CL 80 0-6-0T LOCO	H	295.00
3153	DB CL 120 ELECTRIC LOCO (HOB)	H	244.00	3511	K.W.ST.E. CL C 4-6-2 LOCO	H	685.00
3157	DB CL 160 ELECTRIC LOCO	H	208.00	3514	K.W.ST.E. CL C 4-6-2 LOCO	H	685.00
3160	ÖBB CL 1043 ELECTRIC LOCO	H	220.00	3518	DRG CL 18.4 4-6-2 LOCO	H	325.00
3172	DB CL 111 ELECTRIC LOCO	H	179.00	3526	NS CL 1600 ELECTRIC LOCO (D)	H	345.00
3174	DSB CL MY DIESEL LOCOMOTIVE (E)	H	345.00	3530	SBB CL Re 4/4 ELEC LOCO	H	325.00
3179	DB CL 132 ELECTRIC LOCOMOTIVE (HOB)	H	196.00	3546	DB CL 236 DIESEL LOCO	H	229.00
3181	BURLINGTON NORTHERN F7 DIESEL	H	165.00	3553	DB CL 120.1 ELECTRIC LOCO	H	320.00
3182	CIRCUS LOCO 0-6-0T (D) (L) (P)	H	78.00	3556	SBB CL Ce 6/8 ELECTRIC LOCO	H	495.00
3185	BAVARIAN MOUNTAIN TRAIN (D) (L)	H	239.00	3558	DB CL 103 ELECTRIC LOCO	H	329.00
3186	DB CL 141 ELECTRIC LOCO (P)	H	166.00	3576	DB CL 628.2 RAILCAR	H	405.00
3187	DRG CL EP 2 ELEC LOCO (P)	H	166.00	3581	DB CL 221 DIESEL LOCO	H	405.00
3188	DB CL 103 ELECTRIC LOCO (P)	H	235.00	3604	DGTL DB CL 80 0-6-0T LOCO	H	295.00
3189	HENSCHEL DHG 500 DIESEL (P)	H	99.00	3605	DGTL SBB CL Re 2/4 RAILCAR	H	394.00
3190	DB CL 80 0-6-0T LOCOMOTIVE (P)	H	88.00	3607	DGTL K.W.ST.E. CL T 18 LOCO	H	329.00
3192	DB CL 32 ELECTRIC LOCO (D) (P)	H	165.00	3608	DGTL NS PTT POSTAL RAILCAR (E)	H	399.00
3196	DB CL 81 0-8-0T LOCOMOTIVE (P)	H	148.00	3609	DGTL KPEV CL T18 4-6-4T LOCO	H	329.00
3198	DB DIESEL SWITCHER ENGINE	H	84.00	3610	DGTL DB CL 012 4-6-2 LOCO	H	398.00
3304	DB CL 80 0-6-0T LOCOMOTIVE	H	248.00	3611	DGTL K.W.ST.E. CL C 4-6-2 LOCO	H	649.00
3305	KPEV CL T 18 4-6-4T STEAM LOCO	H	298.00	3614	DGTL K.W.ST.E. CL C 4-6-2 LOCO	D	685.00
3306	DB CL 78 4-6-4T STEAM LOCO	H	289.00	3615	DGTL DB CL 50 2-10-0 LOCO	H	366.00
3307	K.W.ST.E. CL T18 4-6-4T LOCO	H	299.00	3618	DGTL DRG CL 18.4 4-6-2 LOCO	H	328.00
3308	DRG CL 85 2-10-2T LOCOMOTIVE	H	348.00	3624	DGTL SNCF MICHELIN RAILBUS (E)	H	385.00
3309	DB CL 85 2-10-2T LOCO W/TELEX	H	386.00	3629	DGTL DB CL 191 ELECTRIC LOCO	H	485.00
3310	DB CL 012 4-6-2 LOCO W/TENDER	H	349.00	3631	DGTL DB CL 361 LOCO W/TELEX	H	249.00
3311	K.W.ST.E. CL C 4-6-2 LOCO	H	669.00	* 3634	DGTL SNCF CL BB 26000 ELECTRIC LOCO	H	445.00
3313	DB 2-6-2 TANK LOCO (E)	H	259.00	3636	DGTL SBB CL Ae 6/6 ELECTRIC LOCO (L)	H	479.00
3315	DB CL 50 2-10-0 LOCO W/TENDER	H	342.00	3638	DGTL SBB CL Ae 6/6 ELECTRIC LOCO (L)	H	479.00
3317	SNCF CL 231 A STEAM LOCOMOTIVE (E)	H	329.00	3642	DGTL DB CL 111 ELECTRIC LOCO	H	270.00
3318	DRG CL 18.4 4-6-2 LOCO W/TENDER	H	279.00	3647	DGTL DB CL 212 DIESEL LOCO	H	248.00
3322	DB CL 194 ELECTRIC LOCO	H	289.00	* 3648	DGTL DB CL E70 ELECTRIC LOCO	H	569.00
3323	SBB ELECTRIC LOCO CL Re 4/4 (D)	H	233.00	3649	DGTL EMD F-7 DIESEL LOCO SET (D) (L)	D	599.00
* 3326	NS CL 1600 ELECTRIC LOCO	H	349.00	3652	DGTL SBB CL Ce 6/8 ELECTRIC LOCO	H	495.00
3328	SBB CL Re 4/4 ELECTRIC LOCO	H	268.00	3653	DGTL DB CL 120 ELECTRIC LOCO	H	290.00
3329	DB CL 191 ELECTRIC LOCO	H	437.00	3654	DGTL DB CL 120.1 ELECTRIC LOCO	H	319.00
3330	SBB CL Re 4/4 ELECTRIC LOCO	H	269.00	3656	DGTL SBB CL Ce 6/8 ELECTRIC LOCO	H	495.00
* 3331	DELTA-DB CL 140 ELECTRIC LOCOMOTIVE	H	249.00	3657	DGTL DB CL 103 ELECTRIC LOCO	H	300.00
* 3334	SNCF CL BB 26 000 ELECTRIC LOCOMOTIVE	H	395.00	3658	DGTL DB CL 103 ELECTRIC LOCO	H	335.00
3336	SBB CL Ae 6/6 ELECTRIC LOCO (L)	H	445.00	3660	DGTL DB CL 111 ELECTRIC LOCO	H	295.00
3338	SBB CL Ae 6/6 ELECTRIC LOCO (L)	H	445.00	3665	DGTL DB CL 260 LOCO W/TELEX	H	240.00
* 3339	SBB CL Ae 6/6 ELECTRIC LOCOMOTIVE	H	439.00	3672	DGTL DB CL 212 DIESEL LOCO	H	235.00
3340	DB CL 110 ELECTRIC LOCOMOTIVE	H	269.00	3674	DGTL DB CL 216 DIESEL LOCO	H	235.00
* 3341	SJ CL Rc 2 ELECTRIC LOCOMOTIVE	H	260.00	3676	DGTL DB CL 628.2 RAILCAR	H	478.00
3342	DB CL 111 ELECTRIC LOCOMOTIVE	H	245.00	3680	DGTL DB CL 323 DIESEL LOCO	H	348.00
3343	DB CL 151 ELECTRIC LOCOMOTIVE	H	275.00	3681	DGTL DB CL 221 DIESEL LOCO	D	405.00
3344	DB CL 110 ELECTRIC LOCOMOTIVE	H	239.00	3684	DGTL DB CL 050 2-10-0 LOCO	H	350.00
3345	DB CL 140 ELECTRIC LOCOMOTIVE	H	239.00	3687	DGTL DB CL 98.3 0-4-0T STEAM LOCO	H	359.00
3347	DB CL 212 DIESEL LOCO	H	194.00	3688	DGTL HENSCHEL DHG 700 C LOCO	H	170.00
3348	DB CL 120 ELECTRIC LOCOMOTIVE	H	298.00	3690	DGTL DB CL 01.10 4-6-2 STEAM LOCO W/TENDER	H	449.00
3351	SBB CL Ae 3/6 ELECTRIC LOCO	H	282.00	3698	DGTL DB CL 86 2-8-2T W/TELEX	H	320.00
3352	SBB CL Ce 6/8 ELECTRIC LOCO	H	446.00	* 3704	DGTL DB CL 80 TANK LOCO (HF)	H	349.00
				* 3709	DGTL DB CL 85 TANK LOCO (HF)	H	498.00

Märklin, Inc. PO Box 51319, 16988 W. Victor Road, New Berlin, WI 53151-0319

American Subsidiary of Gebr. Märklin & Cie. GmbH, Germany and Exclusive Distributor in North America for Märklin Products

ITEM #	DESCRIPTION	SCALE	PRICE	ITEM #	DESCRIPTION	SCALE	PRICE
* 3739	DGTL SBB CL A# 6/6 ELECTRIC LOCO (HF)	H	539.00	4207	KPEV 2ND CL DBL COMPARTMENT CAR	H	92.50
* 3768	DGTL DB CL 118 ELECTRIC LOCO (HF)	H	529.00	4208	KPEV 3RD CL DBL COMPARTMENT CAR	H	99.00
* 3770	DGTL DB CL 401 INTERCITY EXPRESS (HF)	H	849.00	4209	KPEV 3RD CL DBL COMPARTMENT CAR	H	106.00
* 3790	DGTL DB CL 011 EXPRESS LOCO (HF)	H	485.00	4210	K.W.ST.E. 2ND/3RD CL COACH	H	82.00
* 3791	DGTL DRG CL 03.10 STREAMLINED STEAM LOCO(HF)	H	475.00	4211	K.W.ST.E. 2ND CL COACH	H	82.00
3871	ICE TRAIN SET 3-RAIL DC	H	785.00	4212	K.W.ST.E. BAGGAGE CAR	H	66.50
4009	DB EXPRESS BAGGAGE CAR (P)	H	34.00	4213	K.W.ST.E. 3RD CL COACH	H	82.00
4010	DB SLEEPING CAR (P)	H	34.00	4214	K.W.ST.E. 4TH CL COACH	H	82.00
4012	DB 2ND CL INTERREGIO COACH (P)	H	34.00	4215	SBB 1ST CL EXPRESS COACH	H	56.50
4013	DB 1ST CL IC COACH (P)	H	34.00	4216	SBB 2ND CL EXPRESS COACH	H	56.50
4018	DB CL 995 RAILBUS TRAILER (HOB)	H	45.00	4217	SBB DINING CAR	H	76.00
4019	S-BAHN TRAILER (P)	H	44.50	4220	DB IC 1ST CL COACH	H	43.85
4020	GERMAN 2ND CL LOCAL COACH (P)	H	11.00	4221	DB 2ND CL EXPRESS COACH	H	44.00
4021	GERMAN MAIL CAR (P)	H	14.50	4224	DB IC 1ST CL EXPRESS COACH	H	54.00
4026	DB EXPRESS BAGGAGE CAR (HOB)	H	36.75	4225	DB IC 2ND CL EXPRESS COACH	H	54.00
* 4027	DB IR 1ST CL COACH (HOB)	H	38.50	4226	DB 1ST CL IC COACH	H	56.50
4028	DB CL 815 RAILBUS TRAILER (D)	H	73.50	4227	DB 2ND CL IC COACH	H	56.50
* 4032	DB IR 2ND CL COACH (HOB)	H	38.50	4228	DRG RHEINGOLD 5 CAR SET	H	610.00
4039	DB COACH (HOB)	H	18.00	4229	K.W.ST.E. MAIL CAR	H	83.50
4044	DB EXPRESS BAGGAGE CAR (HOB)	H	36.00	4232	DB SLUMBER COACH	H	55.00
4051	DB 1ST CL EXPRESS COACH (HOB)	H	37.00	4233	DB AUTO CARRIER	H	79.00
4052	DB 2ND CL EXPRESS COACH (HOB)	H	37.00	4234	DB AUTO CARRIER	H	63.50
4053	4051 W/MARKER LIGHTS (HOB)	H	59.00	4235	DB 2ND CLASS LOCAL COACH	H	35.00
4054	DB DINING CAR	H	35.00	4236	SBB 2ND CL KINDERGARTEN CAR	H	56.50
4055	DB IC 1ST CLASS COACH (HOB)	H	38.00	4238	SBB 3RD CLASS EXPRESS COACH	H	49.00
4057	DB IC DINING CAR (HOB)	H	38.00	4239	SBB BAGGAGE CAR	H	49.00
4060	SANTA FE F7 NON-POWERED	H	89.00	4240	DB TEN SLEEPING CAR	H	52.00
4064	DB SLEEPING CAR	H	37.00	4242	NSB BAGGAGE CAR	H	47.50
4066	SBB 1ST CL EXPRESS COACH	H	37.00	4244	SNCF 1ST CL EXPRESS COACH (E)	H	52.00
4067	DB 1ST/2ND CL LOCAL COACH	H	33.00	4245	SNCF 2ND CL EXPRESS COACH (E)	H	52.00
4079	DB 2ND CL LOCAL COACH	H	33.00	4246	SNCF 3RD CL EXPRESS COACH (E)	H	52.00
4080	DB 2ND CL COACH W/BAGGAGE AREA	H	33.00	4247	DB IC 1ST CL EXPRESS COACH	H	48.50
4084	DB AUTO CARRIER	H	37.00	4248	DB 1ST CL COACH	H	51.00
4085	DB TEE/IC 1ST CL COACH (HOB)	H	37.00	4251	SNCB 1ST CL COACH	H	51.00
4087	DB TEE/IC DINING CAR (HOB)	H	37.00	4252	SNCB 2ND CL COACH	H	51.00
4089	4085 W/MARKER LIGHTS (HOB)	H	59.00	4253	SNCF 1ST CL CORAIL COACH	H	51.00
4090	DB TEE/IC VISTA DOME CAR (HOB)	H	49.50	4255	DB 1ST/2ND CL COMMUTER COACH	H	56.00
4098	DB TEE/IC EXPRESS COACH	H	67.00	4256	DB 2ND CL COMMUTER COACH	H	56.00
4100	DB 1ST/2ND CL LOCAL COACH	H	33.00	4257	DB 2ND CL COMMUTER CAB CAR	H	92.00
4101	DB 2ND CL LOCAL COACH	H	33.00	4258	DB 1ST/2ND CL CITY BAHN CAR	H	56.00
4102	DB LOCAL BAGGAGE CAR	H	38.00	4259	DB 2ND CL CITY BAHN CAR	H	56.00
4103	4102 W/MARKER LIGHTS	H	61.50	4260	DB 2ND CL CITY BAHN CAB CAR	H	92.00
4107	GERMAN LOCAL COACH	H	24.50	4262	NS 1ST/2ND CL EXPRESS COACH	H	56.50
4108	GERMAN LOCAL BAGGAGE CAR	H	24.50	4263	NS 2ND CL EXPRESS COACH	H	56.50
4111	DB 1ST CL EXPRESS COACH	H	37.00	4266	SBB 1ST CL IC COACH	H	52.00
4112	DB 2ND CL EXPRESS COACH	H	37.00	4267	SBB 1ST CL EUROFIMA COACH (E)	H	46.50
4113	SNCB 2ND/3RD CL COACH (E)	H	29.75	* 4268	SBB EUROFIMA SLUMBER COACH	H	54.00
4114	SNCB 2ND CL COACH (E)	H	29.75	4272	ÖBB 1ST CLASS COACH	H	55.00
4115	SNCB LOCAL BAGGAGE CAR (E)	H	34.50	4273	ÖBB 2ND CLASS COACH	H	55.00
4121	SHELL EXHIBITION COACH (D)	H	52.00	4274	SNCB SLUMBER COACH	H	52.00
4126	CFL 1ST/2ND CL COACH (E)	H	47.00	4275	DB 1ST CL COACH	H	49.75
4127	CFL 2ND CL COACH (E)	H	47.00	4276	DB 2ND CL COACH	H	49.75
4130	DB TEN SLEEPING CAR (HOB)	H	37.00	4277	DB 2ND CL COACH	H	49.75
4131	DB 1ST/2ND CL LOCAL COACH	H	54.00	4278	DB BAGGAGE CAR	H	49.75
4132	DB 2ND CL LOCAL COACH	H	54.00	4279	DB MAIL CAR (L)	H	52.00
4133	DB 2ND CL COACH W/BAGGAGE AREA	H	54.00	4280	DB MAIL CAR (L)	H	52.00
4153	DB TEE/IC DINING CAR (D)	H	63.75	4281	DB 1ST CL INTERREGIO COACH	H	48.50
4155	ÖBB TEN SLEEPING CAR (E)	H	43.50	4282	DB 2ND CL INTERREGIO COACH	H	48.50
4156	SNCF 1ST CL EXPRESS COACH (E)	H	42.50	4283	DB EXPRESS BAGGAGE CAR	H	53.50
4171	DB ICE COACH	H	115.00	4284	DB IC DINING CAR	H	72.00
4181	BURLINGTON NORTHERN F7 NON-POWERED	H	98.50	4285	DB IC 1ST CLASS COACH	H	55.00
4182	SBB TEN SLEEPING CAR	H	47.00	4286	DB IC 1ST CLASS COACH	H	55.00
4183	DB 1ST/2ND CL S-BAHN COACH	H	59.00	4287	DB IC DINING CAR	H	55.00
4184	DB 2ND CL S-BAHN COACH	H	59.00	4288	DB TEE/IC 1ST CL COACH (P)	H	34.00
4185	DB 2ND CL S-BAHN CAB COACH	H	99.00	4289	DB TEE/IC DINING CAR (P)	H	34.00
4186	OLD TIMER BAGGAGE CAR (P)	H	38.50	4291	DB 1ST CL EXPRESS COACH	H	48.50
4187	S-BAHN TRAILER (HOB)	H	49.00	4292	DB 2ND CL EXPRESS COACH	H	48.50
4188	DB DINING CAR (HOB)	H	37.00	4293	DB EXPRESS BAGGAGE CAR	H	53.50
4189	FS 2ND CL EXPRESS COACH (D)	H	47.50	4294	DB TEE/IC DINING CAR	H	67.00
4192	DB 1ST CL EXPRESS COACH (P)	H	34.00	4295	DB TEE/IC 1ST CL COACH	H	48.50
4193	DB 2ND CL EXPRESS COACH (P)	H	34.00	4296	DB TEE/IC 1ST CL COACH	H	48.50
4194	DB LOCAL COACH (D) (P)	H	20.00	4297	DB TEE/IC DINING CAR	H	49.50
4197	DB 1ST CL EXPRESS COACH (P)	H	34.00	4298	4295 W/MARKER LIGHTS	H	69.75
4198	DB 2ND CL EXPRESS COACH (P)	H	34.00	4301	DB 2ND CL LOCAL COACH	H	75.50
4199	K.BAY.STS.B. 3RD CL COACH (P)	H	34.00	4302	DB 2ND CL LOCAL COACH	H	75.50
4200	DB 1ST CL COMPARTMENT CAR	H	41.50	4303	DB MAIL/BAGGAGE CAR	H	75.50
4201	DB 2ND CL COMP. CAR W/BRAKEMAN'S CAB	H	52.00	* 4370	DB INTERCITY EXPRESS OPEN SEATING COACH	H	110.00
4202	DB 2ND CL COMPARTMENT CAR	H	41.50	* 4371	DB INTERCITY EXPRESS OPEN SEATING COACH	H	110.00
4203	DB 2ND CL COMPARTMENT CAR	H	45.75	* 4377	SJ EXPRESS TRAIN PASSENGER CAR	H	49.00
4206	KPEV 1ST CL COMPARTMENT CAR	H	59.00	* 4378	SJ EXPRESS TRAIN DINING CAR	H	49.00

Märklin, Inc. PO Box 51319, 16988 W. Victor Road, New Berlin, WI 53151-0319

American Subsidiary of Gebr. Märklin & Cie. GmbH, Germany and Exclusive Distributor in North America for Märklin Products

ITEM #	DESCRIPTION	SCALE	PRICE	ITEM #	DESCRIPTION	SCALE	PRICE
* 4389	DB S-BAHN CAR SET	H	275.00	4700	DB BOXCAR	H	26.95
4400D	BONN ANNIVERSARY SET-6 CARS	H	159.00	4700N	NOCH SIX TRUCK SET	Z	46.25
4400F	AIRLINES OF THE WORLD-6 CARS	H	SEE YOUR DEALER	* 4701	DR BOXCAR	H	28.00
4400G	1991 ANNIVERSARY SET-3 CARS	H	SEE YOUR DEALER	4710	DB BOXCAR	H	26.95
4400H	WILDWEST/CIRCUS SET-3 CARS	H	115.00	4712	DB DOUBLE AUTO CARRIER	H	66.50
4405	CFL BOXCAR	(E) H	13.50	4716	SNCB EAOS GONDOLA	(E) H	28.00
4410	DB BOXCAR	(HOB) H	15.00	4718	SBB EAOS GONDOLA	(E) H	28.85
4411	4410 W/MARKER LIGHTS	(HOB) H	25.00	4719	NS EAOS GONDOLA	(E) H	25.95
4413	DB DUMP CAR	(HOB) H	12.00	4726	DB GONDOLA WHINGED ROOF	H	34.75
4414	DB BANANA CAR	(HOB) H	16.50	4729	SJ BOXCAR/SLIDING ROOF	H	37.00
4415	DB REFRIGERATOR CAR	(HOB) H	15.00	4732	DB BOXCAR	H	29.00
* 4416	"VELTINS BREWERY" BEER CAR	(HOB) H	17.50	* 4733	FS "INTERFRIGO" REFRIGERATOR CAR	H	33.50
4423	DB LOW SIDED GONDOLA	(HOB) H	9.75	4734	DB SLIDING WALL BOXCAR	H	32.50
4424	4423 W/BULLDOZER	(HOB) H	16.50	4735	SBB SLIDING WALL BOXCAR	H	32.50
4428	OVOMALTINE CAR	(L) H	14.75	4736	DBP BOXCAR	H	34.00
4430	DB GONDOLA	(HOB) H	12.75	4740	DB DEPRESSED FLATCAR F/TRUCK TRANSPRT	H	69.00
4431	4430 W/COAL LOAD	(HOB) H	14.50	4741	DB DEPRESSED FLATCAR F/TRUCK TRANSPRT	H	56.00
4432	WINE BARREL CAR	H	25.50	4748	DSB BP PRESSURIZED TANK CAR	H	42.00
4436	DB DINKELACKER BEER CAR	H	16.00	4750	DEA TANK CAR	H	27.85
4439	DB STUTTGART HOFBRAU BEER CAR (HOB)	H	16.50	* 4753	"BRENNTAG COMPANY" CHEMICAL TANK CAR	H	43.50
4440	DB ARAL TANK CAR	(HOB) H	19.00	* 4754	"ESSO" TANK CAR	H	43.50
4441	DB ESSO TANK CAR	(HOB) H	19.00	* 4756	"SHELL" TANK CAR	H	43.50
4442	DB SHELL TANK CAR	(HOB) H	19.00	* 4757	"EVA COMPANY" CHEMICAL TANK CAR	H	43.50
4445	DB VDF CONTAINER CAR	H	14.85	4758	DB BP TANK CAR	H	44.00
4459	DB STAKE CAR	(HOB) H	14.50	4759	SBB BULK CONTAINER CAR	H	29.00
4460	DB TILT ROOF BOXCAR	H	25.50	4761	DB DYCKERHOFF BULK CONTAINER CAR	H	27.50
4465	DB GONDOLA	H	12.75	4773	RAILBOX BOXCAR	H	38.50
4473	DB LOW SIDED GONDOLA	(HOB) H	21.50	4774	SOO LINE GONDOLA	H	26.95
4474	4473 W/BULLDOZER & LOADER	(HOB) H	33.50	4775	BURLINGTON NORTHERN CABOOSE	H	44.00
4475	4473 W/TARP	(HOB) H	25.50	4776	CONRAIL BOXCAR	H	38.50
* 4478	"MANNESMANN COMPANY" CRUDE IRON CAR	H	46.00	4777	SANTA FE CABOOSE	H	44.00
* 4479	"MANNESMANN COMPANY" SLAG CAR	H	46.00	4780	K.W.ST.E. CLUSS BEER CAR	H	36.00
* 4485	"BÄRENMARKE" REFRIGERATOR CAR (HOB)	H	17.50	4781	KPEV SAUGLINGS FURSORGE CAR	H	37.75
4537	DB LOW SIDED GONDOLA	(D) (P) H	20.00	4782	K.W.ST.E. ESSLINGER BEER CAR	H	36.00
4538	DB LOW SIDED GONDOLA	(P) H	10.50	4789	GER FREIGHT CAR ASSOC CAR SET	H	266.00
4541	PRIMEX CONTAINER CAR	(P) H	16.50	4795	K.W.ST.E. GONDOLA	H	21.00
4542	DB BOXCAR	(P) H	14.50	* 4796	SBB DEPRESSED FLOOR FLAT CAR SET	H	121.00
4543	RITTER SPORT REFRIGERATOR CAR	(P) H	17.85	* 4797	ÖBB DEPRESSED FLOOR FLAT CAR SET	H	121.00
4549	CASTROL TANK CAR	(P) H	14.85	4870	DRG ABC TANK CAR	H	38.00
4554	4537 W/PRIMEX TARP	(P) H	23.00	4871	DRG MEXPHALT SPRAMEX TANK CAR	H	38.00
4555	DB BALLAST CAR	(P) H	24.85	4880	DB BOXCAR	H	32.50
4556	DB CRANE CAR	(P) H	36.95	4886	DB GONDOLA	H	28.50
4558	DB POSTAL BOXCAR	(P) H	14.50	5004	M TRACK FEEDER WIRE	H	2.30
4573	CONTAINER CAR W/TRUCK	(P) H	56.00	5022	M TRACK INSULATOR PK/10	H	1.50
4582	DB GONDOLA	(P) H	14.00	5100	M TRACK 14-1/8" R 30° PK/10	H	2.65/pc
4583	DB DUMP CAR	(P) H	9.85	5101	M TRACK 14-1/8" R 15° PK/10	H	2.50/pc
4584	CIRCUS CAR 1 W/TRUCK	(L) (P) (D) H	39.00	5102	M TRACK 14-1/8" R 7° 30' PK/10	H	2.35/pc
4585	SARRASANI CIRCUS SET #2	(P) (D) H	39.00	5103	M TRACK FEEDER 14-1/8" R 30°	H	6.50
4587	DB BP TANK CAR	(P) H	37.00	5106	M TRACK 7-1/8" STRAIGHT PK/10	H	2.65/pc
4588	DB BP STROMEYER TANK CAR	(P) H	37.00	5107	M TRACK 3-9/16" STRAIGHT PK/10	H	2.50/pc
4595	STAKE CAR DB	(P) H	14.60	5108	M TRACK 1-3/4" STRAIGHT PK/10	H	2.35/pc
4610	DB BALLAST CAR	(HOB) H	27.50	5109	M TRACK 1-5/16" STRAIGHT PK/10	H	2.35/pc
4612	DB AUTO CARRIER	(HOB) H	27.50	5110	M TRACK 7/8" STRAIGHT PK/10	H	2.35/pc
4613	DB AUTO CARRIER W/AUTOS	(HOB) H	38.95	5111	M TRACK 7-1/8" STRAIGHT FEEDER	H	6.50
4617	DB DEPR. CTR. FLAT CAR W/TRANS	H	41.95	5112	M TRACK UNCOUPLER TRACK	(HOB) H	19.00
4618	DB DEPR. CTR. FLAT CAR W/CRATE	H	39.00	5113	M TRACK LIGHT POLE FOR 5112	H	9.95
4619	DB GONDOLA W/SLIDING ROOF	H	24.50	5114	M TRACK CROSSING 30°	H	14.50
4624	DB HOPPER CAR	H	34.75	5115	M TRACK STRAIGHT CONTACT TRACK	H	6.95
4626	DB COVERED HOPPER CAR	H	37.50	5116	M TRACK CURVED CONTACT TRACK	H	6.95
4631	DB SIDE DUMP CAR	H	37.50	5120	M TRACK 11-1/4" R 45° PK/10	H	2.95/pc
4633	DB BOXCAR W/SLIDING ROOF & WALLS	H	35.75	5128	M TRACK DOUBLE SLIP REMOTE	H	57.50
4635	DB MULTI-SECTION DUMP CAR	H	37.50	5129	M TRACK 2-3/4" STRAIGHT PK/10	H	2.45/pc
4643	DB ARAL TANK CAR	H	42.00	5131	M TRACK 7-1/8" STRAIGHT FEEDER W/CAP	H	9.50
4644	DB BP TANK CAR	H	24.75	5137	M TRACK TURNOUT R & L REMOTE	H	73.50
4650	DB ESSO TANK CAR	H	41.50	5138	M TRACK TURNOUT LEFT REMOTE PK/2	H	73.50
4651	DB SHELL TANK CAR	H	41.50	5139	M TRACK TURNOUT RIGHT REMOTE PK/2	H	73.50
4663	DB FLAT CAR W/STAKES	H	38.95	5140	M TRACK TURNOUT CURVED R & L REMOTE	H	73.50
4684	DB TFG CONTAINER CAR	H	31.00	5141	M TRACK TURNOUT CURVED LEFT REMOTE PK/2	H	73.50
4685	DB LUMBER CAR SET	(HOB) H	33.00	5142	M TRACK TURNOUT CURVED RIGHT REMOTE PK/2	H	73.50
4671	DB CRANE CAR	(HOB) H	38.95	5145	M TRACK CONTACT TRACK SET	H	12.75
4679	K.W.ST.E. BOXCAR	H	32.00	5146	M TRACK STRAIGHT CIRCUIT TRACK	H	8.95
4684	DRG FLAT CAR/PIVOT CRADLE	H	31.00	5147	M TRACK CURVED CIRCUIT TRACK 15°	H	8.95
4689	SBB EAOS GONDOLA	H	28.85	5160	M TRACK 14-3/16" R 30° 6/PK	(HOB) H	16.00
4690	DB EAOS GONDOLA	H	28.85	5166	M TRACK 7-3/32" STRT R 30° 10/PK	(HOB) H	26.50
4692	DB BOXCAR	H	31.00	5167	M TRACK ASST PKG 8/PK	(HOB) H	19.50
4693	DB TELESCOPING CAR	H	51.00	5190	M TRACK E MAN. TRACK EXTEN SET	(HOB) H	66.00
4694	DB FLAT CAR W/STAKES	H	31.50	5191	M TRACK E ELEC TRACK EXTEN SET	(HOB) H	124.00
4697	DRG FLAT CAR W/LD CRDL & BRK CAB	H	31.00	5192	M TRACK T1 ELEC TRACK EXT SET	(HOB) H	132.00
4698	SBB BOXCAR W/BRAKEMANS CAB	H	27.50	5193	M TRACK T2 ELEC TRACK EXT SET	(HOB) H	122.00
4699	DB FREIGHT BAGGAGE CAR	H	29.50	5194	M TRACK T3 ELEC TRACK EXT SET	(HOB) H	199.00

Märklin, Inc. PO Box 51319, 16988 W. Victor Road, New Berlin, WI 53151-0319

American Subsidiary of Gebr. Märklin & Cie. GmbH, Germany and Exclusive Distributor in North America for Märklin Products

SPECIALTY ITEMS

(Non-Cataloged Items)

märklin®

- The products featured in this supplement are non-cataloged items and some are produced exclusively for the North American market.
- Availability of limited run and discontinued items cannot be guaranteed.
- In order to stay up-to-date on the availability of non-cataloged items we recommend you contact your local Märklin dealer.

•Prices are listed at suggested retail as of April 1, 1992.

Z-GAUGE PRODUCTS

Briefcase Layouts

Imagine the surprise you will generate when you open this attache case at your next meeting and have your Märklin Z-gauge freight train running in seconds! Whether on the Bavarian or picturesque winter scene layout, your attache will be the envy of your friends and business acquaintances.



#0403

Bavarian Layout, #0403

Briefcase is 14 x 19". Trains run on a 9-volt battery controller (battery not included) or a standard Märklin transformer. This layout includes a steam locomotive and three freight cars.

\$789.00



#0408

Winter Scene Layout, #0408

Briefcase is 14 x 19". Trains run on a 9-volt battery controller (battery not included) or a standard Märklin transformer. This layout includes a steam locomotive and two passenger cars.

\$789.00



#509

Z-Gauge American Layout Board, #509

Travel across rural America on this special layout board! It is two train operational and is mounted on a sturdy wood frame measuring 21 1/3 x 28 1/4". Rolling stock and transformer are not included.

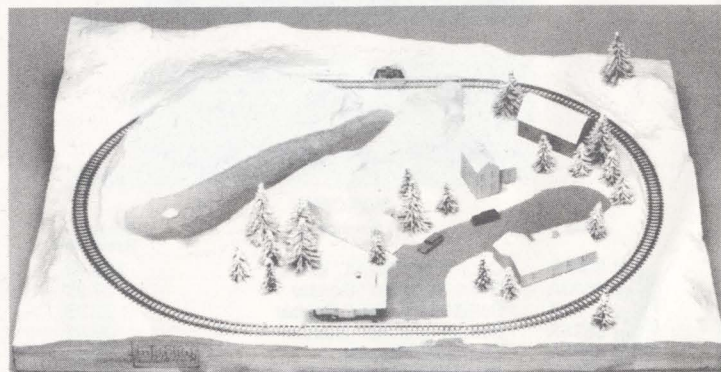
#406



Z-Gauge European Layout Board, #406

Tour the European countryside on this unique layout board! It is two-train operational and is mounted on a durable wood frame measuring 21 1/3 x 28 1/4". Rolling stock and transformer are not included.

\$1085.00



#2611A

Z-Gauge Layout Board, #2611A

Explore the snow covered highlands of the western United States on this layout board! Oval track measures 13 x 19". Rolling stock and transformer are not included.

\$165.00

Note: We reserve the right to substitute locomotives and cars based on availability. Track plans and scenicing may vary from photos shown.

Märklin, Inc. maintains no responsibility for inadvertent errors in the price list. Prices are subject to change without notice. All items are invoiced at prices in effect at the time of shipment.

Z-GAUGE PRODUCTS



CLASSIC AMERICAN SERIES™



Made in America for Mini-Club modelers who want to recreate Hometown, U.S.A. These polycast buildings show amazing detail right out of the box. Use standard modeling paints to further enhance the details on the building. Custom finishing will give your layout a unique and special appearance that makes it yours alone.

Item #	Structure	Suggested Retail Price
#2630	Passenger Depot	\$11.50
#2631	Two Story Residence	9.50
#2632	Factory	13.00
#2633	Feedmill	12.50
#2634	Freight Terminal	15.00
#2635	Mine Head	14.00
#2637	Country Church	12.00
#2638	Ranch House	9.50
#2639	Barn	10.00
#2640	Store Fronts	11.00

LIMITED Z-GAUGE CARS



As part of a special arrangement with the Miller Brewery, these cars are now available to you on a limited basis only.

Item#	Description	Suggested Retail Price
2401M	Miller High Life I	\$25.00
2402M	Miller Genuine Draft	25.00
2403M	Miller Lite	28.00
2404M	Miller High Life (Lady)	28.00

AMERICAN PROTOTYPES



#8808

LOCOMOTIVES

Item#	Description	Suggested Retail Price
*8807	Southern Railway Steam Locomotive	\$229.00
8808	New York Central Locomotive	229.00
*8809	Southern Pacific Daylight F7 Diesel Loco	188.00
*8860	Santa Fe F-7 Diesel Locomotive	178.00
8861	Southern Pacific F-7 Diesel Locomotive	178.00
8863	Burlington Northern Locomotive	178.00



#8683

GONDOLAS

Item#	Description	Suggested Retail Price
8638	Reading Gondola	\$29.50
8642	Soo Line Gondola	29.50
8674	New York Central Gondola	29.50
8678	Pennsylvania Gondola	29.50
8683	Rail-Gon Gondola	29.50



#8681

BOXCARS

Item#	Description	Suggested Retail Price
8692A	"Ontario Northland" Boxcar	\$39.95
8693A	"Great Northern" Boxcar	39.95
8694A	"Baltimore & Ohio" Boxcar	39.95
8695A	"Boston & Maine" Boxcar	39.95
8696A	"The Rock" Boxcar	39.95
8637	Milwaukee Road Boxcar	31.50
8641	Union Pacific Boxcar	31.50
8671	Western Pacific Boxcar	31.50
8672	Frisco Boxcar	31.50
8673	New Haven Boxcar	31.50
8677	Rio Grande Boxcar	31.50
8681	Illinois Central Boxcar	31.50
8682	Rail-Box Boxcar	31.50

NEW
NEW
NEW
NEW
NEW

* Featured in the Z Gauge Catalog



#8684

TANK CAR

Item#	Description	Suggested Retail Price
8684	Mobil Gas Tank Car	\$42.00

PASSENGER CARS

Item#	Description	Suggested Retail Price
*8784	Southern Pacific Daylight Coach	\$35.00
*8785	Southern Pacific Daylight Diner Car	35.00
*8787	Southern Pacific Vista Dome Car	37.00
*8788	Southern Pacific Baggage Car	35.00
*8789	Southern Pacific Observation Car	37.00



#8680

CABOOSES

Item#	Description	Suggested Retail Price
8679	Southern Caboosie	\$41.50
*8636	Santa Fe Caboosie	41.50
8640	Southern Pacific Caboosie	41.50
8670	Burlington Northern Caboosie	41.50
8680	New York Central Caboosie	41.50

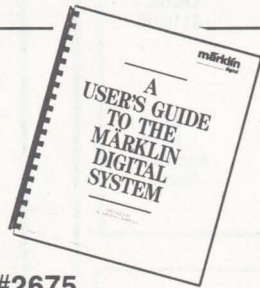
DIGITAL PRODUCTS

Available in North America Only

**Digital Conversion
Easy & Economical
With This Central
Control Unit, #6023
\$489.00**



The unit, #6023, combines the Control 80, Central Unit, Keyboard and Interface functions. Best of all, the suggested retail price is less than half of that for acquiring these units separately. The unit controls as many as four different trains and four turnouts/signals.



**A User's Guide to the
Märklin Digital System, #2675**

A comprehensive introductory guide to the Märklin Digital System. Outlines all components and how they are assembled for an operating layout. Also includes programming samples so the Digital System can be interfaced with your personal computer. **\$15.95**

LIMITED SETS

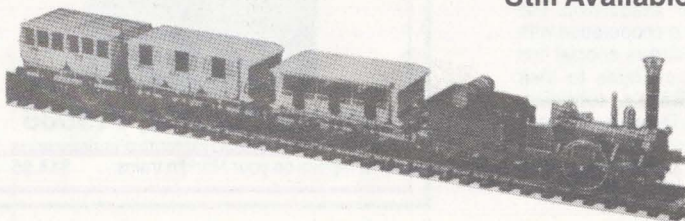
**Two Nostalgic Trains—
Together in One
50th Anniversary Set
Still Available**



HO 50th Anniversary Set, #0050

Take a ride down memory lane with these two trains recreated especially by Märklin in 1985 to commemorate the 50th anniversary of HO! You get replicas of the first steam passenger and electric freight trains offered in HO. Only 5,000 were produced worldwide. **\$495.00**

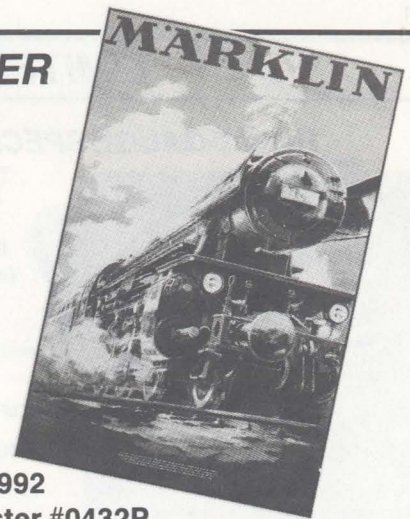
**1-Gauge Adler Train Set, #5751
Still Available**



This is a finely-detailed replica of the historic Adler train, circa 1935. Production limited to 5,000

\$2,525.00

POSTER



**Märklin 1992
Train Poster #0432P**

This new 36 x 24" train poster features the class 23 locomotive in a full color reproduction of art done in the 1950's. One of the few color steam trains ordered by the German Federal Railroad after 1945, the locomotive was designed for light freight, passenger and express passenger work. **\$5.95**

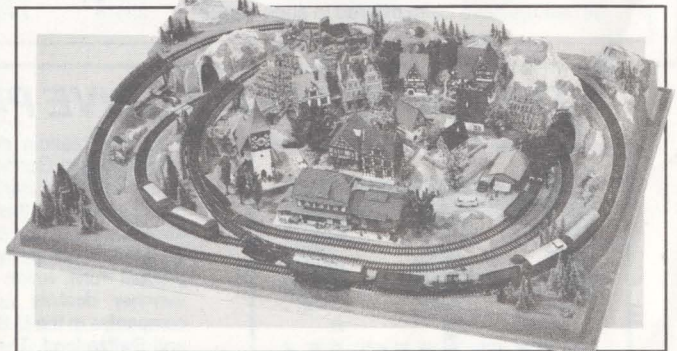
CALENDAR



**1992 Märklin Calendar
Wall Poster #0429A**

This 24 x 36" 1992 wall calendar features the full color reproduction of the 1952/53 Märklin Catalog showing a busy station scene with the Swiss Crocodile CCS 800/3015 and German 01 express locomotive F 800/3008. Full calendar down the side shows the full year at a glance. **\$5.95**

HO PRODUCTS



"WALDBURG" HO-LAYOUT, #0501

- 2 Train operation (Trains & Transformer not included)
- Size - 3'3" x 4'7"
- M-Track

\$1995.00

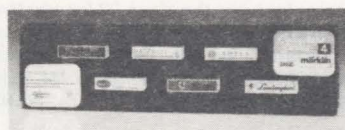
LIMITED ITEMS

HO & Z-GAUGE SPECIAL COLLECTORS SERIES



These limited, color imprinted collector series cars are produced exclusively for Märklin, Inc. The series themes vary from regional European breweries to special events and products in a specific country or region.

Item#	Description	Suggested Retail Price
HO Gauge		
4400F	Airlines of the Worlds Set 6/pk	See Your Dealer
4400G	1991 Anniversary Set 3/pk	See Your Dealer
4400H	Wild West/Circus Set 3/pk	\$115.00
Z-Gauge		
88125	Spirit of France Set 3/pk	67.50
88126	Auto Companies of France 3/pk	85.00
8400D	Auto Companies Set	See Your Dealer



Collectors Please Note!

INTERNATIONAL CAR SERIES FIVE YEAR PROGRAM NOW COMPLETE



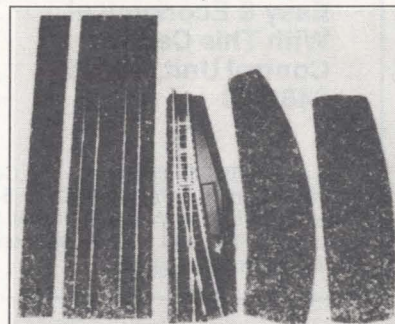
The International Series was first introduced in 1987 and is Märklin, Inc.'s way of paying tribute to the many friends of Märklin trains around the world. As a Märklin collector, you have an opportunity to collect and assemble a model train unlike any that has ever existed before. A train made up of 15 cars each with its own unique full color imprint featuring a range of cultural, historical and architectural landmarks that best symbolize the accomplishments, character and people of each selected country. The International Series will extend over five years with 15 nations in total being represented. The cars will be produced each year with imprints alternating between HO and Z-gauge until all nations have been offered in each gauge.

Item#	Country Represented	Suggested Retail Price
1987 Series SOLD OUT		
1988 Series		
82513	HO Australia	\$39.95
82514	HO Netherlands	39.95
82515	HO Italy	39.95
82553	Z Austria	24.50
82554	Z Belgium	24.50
82555	Z U.S.A.	24.50
1989 Series		
2551A	HO Great Britain	\$39.95
2553A	HO Austria	39.95
2556A	HO Canada	39.95
2510A	Z Switzerland	24.50
2514A	Z Netherlands	24.50
2516A	Z Canada	24.50
1990 Series		
2550A	HO Japan	\$39.95
2552A	HO Sweden	39.95
2557A	HO Mexico (Sold Out)	39.95
2512A	Z France	24.50
82513A	Z Australia	24.50
2558A	Z Mexico (Sold Out)	24.50
1991 Series		
82554A	HO Belgium	\$49.50
82555A	HO U.S.A.	49.50
82556	HO Russia	49.50
2511A	Z Germany	29.50
82515A	Z Italy	29.50
82516	Z Russia	29.50

Z-SCALE ITEMS

1:1 Z-SCALE CORK ROADBED

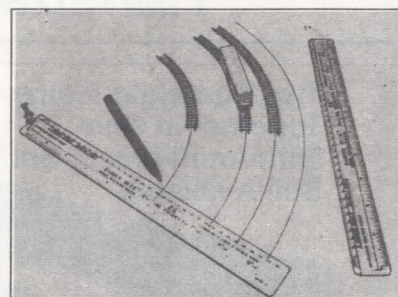
Distributed by Märklin, Inc.



- Beveled Edges for Realistic Appearance
- High Quality Fine-Grained Cork
- Easy to Apply and Ballast
- Straight Sections in Manageable Lengths
- Pre-Cut Switch Pieces
- Fits All Märklin Track
- Handcrafted in the USA

Item#	Description	Suggested Retail Price
M-100-5	Single Track 5-18" pcs	\$2.60
M-200-2	Double Track 2-18" pcs	2.10
M-300-1	Straight Switch 1pair L&R	2.65
M-400-1	Curved Switch 1 pair L&R	2.65
M-500-1	Double Slip Switch 1 piece	1.90
M-600-2	Cork Base 2-5 x 7" pcs	1.95

1:1 RADIUS RULE™



- Durable Translucent Plastic Allows Clear View of Subject Measured
- Easy to Use Radius Template Draws Full Size Curves to Fit All Märklin Track
- Vinyl Storage Sleeve
- Made in USA

Item#	Description	Suggested Retail Price
R-180 -	Z-Scale Radius Rule	\$6.95

Available at Your Local Hobby Dealer

THE MÄRKLIN EXCLUSIVE PROGRAM



A special Märklin dealer association has been established in Germany under the name Märklin Dealer Initiative. Participating dealers pay annual dues to belong to this "Exclusiv" association. The main feature of this program is a cooperation with the Märklin company to manufacture special line product runs which are only available to their member dealers and to Märklin's subsidiary companies in the U.S., France, Benelux countries and Switzerland. These items are packaged with a special logo titled "Exclusiv". Contact your local authorized Märklin dealer to get information on what items are available.



Märklin Tool Kit, #19005

All the tools you need for routine maintenance and repairs on your Märklin trains. **\$14.95**

Märklin, Inc.

P.O. Box 51319, 16988 W. Victor Road, New Berlin, WI 53151-0319

Märklin, Inc., is the American Subsidiary of Gebr. Märklin & Cie. GmbH, West Germany, and the exclusive distributor in North America for Märklin Products.

Printed in USA Publication #2625

VIDEOS

Rhätische Bahn

This masterpiece captures the excitement of the railway jubilees held this summer all across Europe, including celebrations at Chur and Prattigauer! Time: 60 minutes.
Item #0113 Sugg. Retail Price: \$46.95

Alpine Express

The travel agent's dream! Climb aboard for the most memorable Alpine railway expeditions ever. From Kandersteg to Andermatt on the Glacier Express. Time: 60 minutes.
Item #0114 Sugg. Retail Price: \$46.95

European Video Express Volume 4

The 4th edition of this highly acclaimed series of railway video "magazines" puts you at the controls of some of the most exciting locomotives in European history. Time: 60 minutes.
Item #0115 Sugg. Retail Price: \$37.95

European Video Express Volume 5

Your journey begins with a successful attempt at a world record! Then it's on to an exclusive trip behind the Iron Curtain for the 150th anniversary of the East German Railway. Time: 60 minutes.
Item #0116 Sugg. Retail Price: \$37.95

European Video Express Volume 6

Climb aboard the historic Golden Arrow as this recently-revived train makes its "maiden" trip from London to Paris. You'll also take a fascinating tour of Luxembourg Railway. Time: 60 minutes.
Item #0117 Sugg. Retail Price: \$37.95

European Video Express Volume 8

Featuring the AlbtalBahn, WutachtalBahn and Kaiserstuhlbahn in Germany, the TGV Atlantique on the day it broke the world speed record, the closure of the Bort les Orgues-Neussargues line and Mallard meeting City of Truro at Swindon (three record holders on one programme).
Item #0119 Sugg. Retail Price: \$37.95

The Orient Express

Whenever you need a little pampering, take a trip on the famed Orient Express. This 1,800-mile journey from Paris to Istanbul aboard the elegant blue train was once reserved for Europe's aristocracy. Enjoy one of the greatest train rides in history over and over again. Time: 62 minutes.
Item #0121 Sugg. Retail Price: \$33.50

Full Steam Ahead

Go full steam ahead with the legendary German Heavy Pacific 01 150. First arriving on the scene in December of 1935, the Germany Heavy Pacific 01 150 was chosen to open the 1935 German Railway Parade of the Reichsbahn in Nuremberg. The video includes authentic portrayals of historical events, as well as fascinating archive footage of the 01 150. Time: 50 minutes.
Item #0123 Sugg. Retail Price: \$39.95



252 MPH on RAILS

Experience the thrill of traveling 252 MPH across Germany on the 1988 World record run of the German ICE train. This fantastic "railflight" was filmed by seventeen different camera teams from inside and outside the train. Time: 30 minutes.
Item #0122 Sugg. Retail Price: \$19.95



The Famous 1985 Rail Festival in Nuremberg

The German railroad celebrated 150 years of railroading to commemorate the opening on December 7, 1835 of the first stretch of railroad between Nuremberg and Furth. The festival features more than 250 cars representing 150 years of technology. Six camera teams were there. Even longtime railroad buffs will be surprised by the multitude of showpieces presented. Time: 55 minutes.
Item #0124 Sugg. Retail Price: \$29.95



Bavarian Cab Ride

This is a view from the driver's cab on the express from Passau traveling between Nurnberg and Wurzburg.
Item #0120 Sugg. Retail Price: \$37.95

Railways of Southern Germany

Includes many of the main railway routes in Southern Germany including the Black Forest and Bavaria. Private lines and steam centres (including a steam hauled trip of the Rheingold) are covered.
Item #0118 Sugg. Retail Price: \$46.95

GUIDEBOOKS

NEW!



Koll's Preis-Katalog

Volume 1- Collector's guide to Märklin OO/HO locomotives with descriptions of variations for each model, years produced and suggested values in German Marks. Includes Primex and Export models. German Text.
Item #0921 Sugg. Retail Price: \$49.95

Volume 2- Collector's guide to Märklin OO/HO cars, accessories and catalogs with values in German Marks. Includes Primex and Export models for cars. German text.
Item #0922 Sugg. Retail Price: \$49.95

Kolls' Spezial-Katalog

Collector's guide to uncataloged special imprint and special edition cars produced for individual dealers/companies for coop groups or chains of dealers, and uncataloged models produced for export countries. Description of each model, year(s) produced, quantity produced (if known), suggested values in German Marks. German text.
Item #0923 Sugg. Retail Price: \$59.95

NEW! Greenberg's Model Railroading with Märklin HO

written by Carl Weaver (2nd Edition) Starting where the first edition left off this edition offers expanded insight on how to plan, build and landscape a layout for the Märklin HO system. New chapters on controlling your trains, layout photography and more. Now with color photography.
Item #2622B Sugg. Retail Price: \$19.95

Greenberg's Guide To Märklin HO Train's

written by Robert P. Monaghan This book is a comprehensive guide to OO/HO production, illustrated with color and black and white photographs, and includes market values. 166 pages.
Item #2613 Sugg. Retail Price: \$35.00

Greenberg's Model Railroading with Märklin Z-Gauge

written by: Riley O'Connor An easy-to-follow yet sophisticated presentation of how to build and maintain a Märklin Z Gauge layout. Basics of layout planning, bench work construction, track laying, wiring, and scenery construction, as well as layout maintenance. Softbound, 96 pages, many photos and illustrations.
Item #2623A Hard bound \$24.95
Item #2623 Soft Bound \$14.95

Märklin, Inc.

P.O. Box 51319, 16988 W. Victor Road, New Berlin, WI 53151-0319

Marklin, Inc., is the American Subsidiary of Gebr. Marklin & Cie. GmbH, Germany, and the exclusive distributor in North America for Marklin Products.
 Printed in USA Publication #2625

primex

Modell-Eisenbahn · Spur HO

STRUCTURES & LAYOUT ACCESSORIES

The Primex line offers the following advantages:

QUALITY

The fine European engineering and quality that Märklin has always delivered. Realistic appearances, durable fabrication, plus the same ease of use associated with all Märklin products.

WIDE ASSORTMENT

You'll find over 66 structures to choose from, including residential, commercial, industrial and recreational.

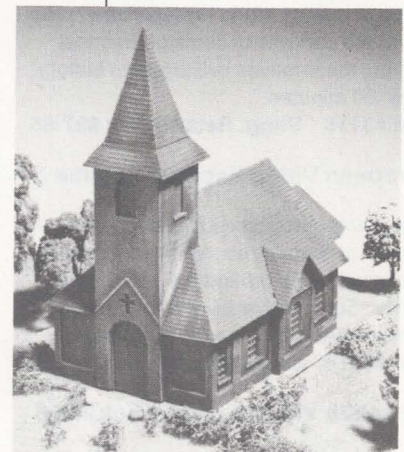
Layout accessories- amounting to more than 45 items- include: lamps, lights, vehicles, fences, bridges, tunnels, people, animals, trees, bushes. . .

Plus more than 10 locomotives and 40 HO cars are part of the Primex line. Some are limited editions, others are first run- all are Märklin quality.

MODERATELY PRICED

Retail prices start as low as \$3.95. Please check the Primex prices in the box at the end of this section and compare our prices. You will find that they are a great alternative.

STRUCTURES



Church

#1775 \$9.50



Drive Up Diner

#1698 \$11.50

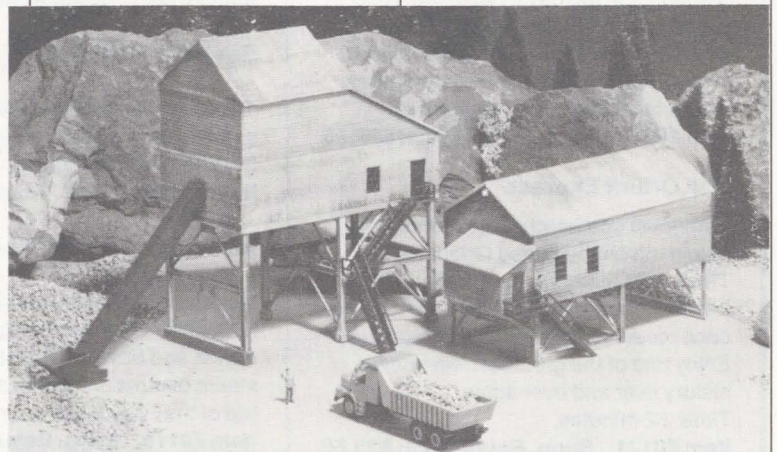
Quarry Buildings

#1780 \$11.95

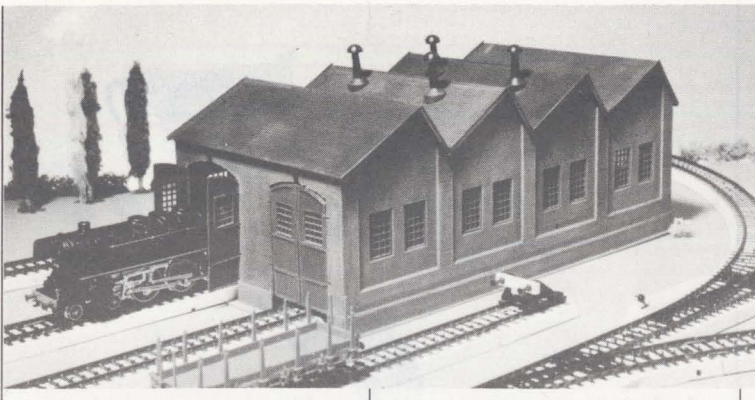


Water Mill

#1771 \$6.50



STRUCTURES



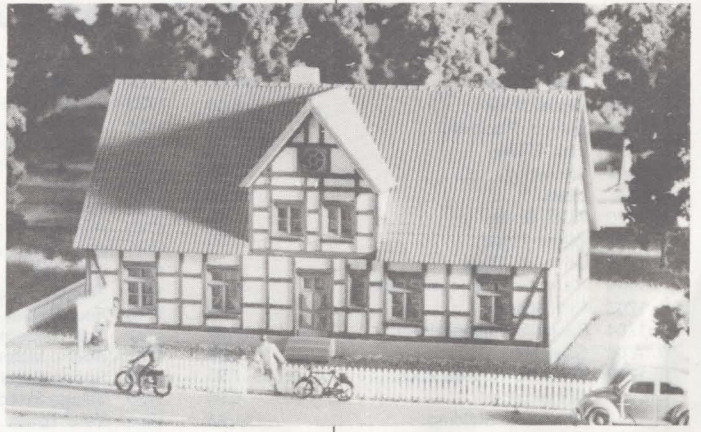
Engine House
#1774 \$14.50



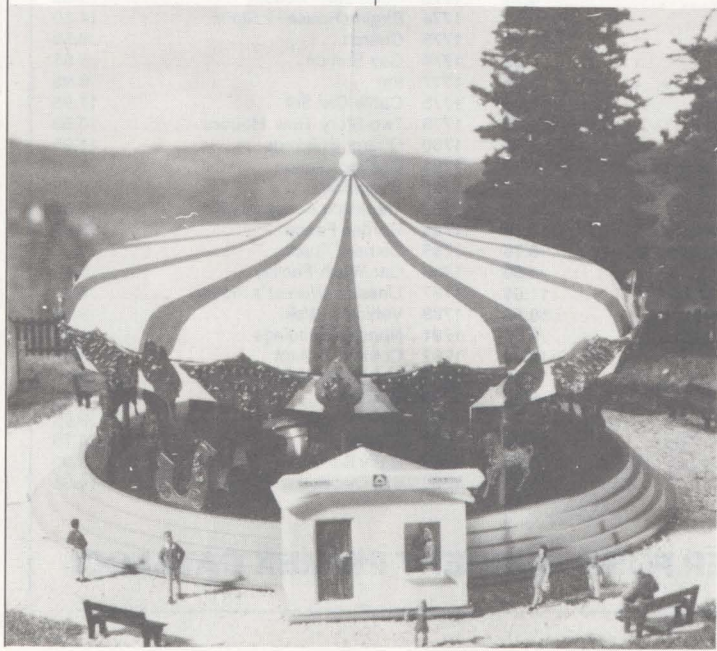
Water Tower
#1697 \$14.50



Cable Car Set
#1778 \$17.95



Half-Timbered House
#1747 \$14.00

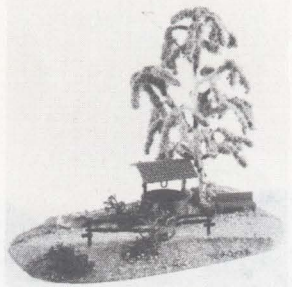


Merry-Go-Round
#1699 \$25.95

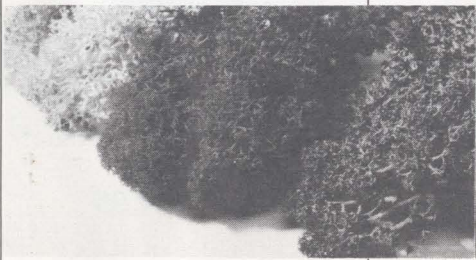
ACCESSORIES PRODUCTS



Season Motifs
#1767 \$15.75
4/pack



Railroad Employees
#1730 \$6.75



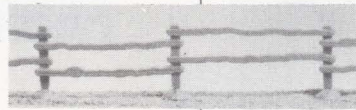
Ground Cover
#1766 \$7.50



Animals
#1732 \$6.75



Garden Fence
#1784 \$5.60



COMPLETE BUILDING & LAYOUT ACCESSORY LINE

1689 Castel.....	\$21.00	1731 Passengers 6/pk.....	\$6.75	1765 Bridge Pillars.....	\$3.95
1690 Train Station.....	13.50	1732 Animals (6).....	6.75	1766 Ground Cover.....	7.50
1691 Signal Tower.....	6.50	1733 Cases, Barrels, Accessories.....	3.75	1767 Scenery Motifs 4pcs.....	15.75
1692 Station Platform.....	9.75	1734 Half Timbered House.....	7.50	1769 Gravel Loader.....	7.95
1693 Post Office.....	12.95	1735 Water Tower "Crailsheim".....	8.95	1770 Palace.....	11.95
1694 Chalet.....	9.95	1736 Pedestrian Overpass.....	3.50	1771 Water Mill.....	6.50
1695 Hotel.....	16.50	1737 Tunnel.....	12.95	1772 Bungalow.....	3.95
1696 Track Scale.....	11.50	1738 Tunnel.....	8.95	1773 Suburban House.....	3.95
1697 Water Tower.....	14.50	1740 Pine Trees 12/pk.....	12.95	1774 Engine House - 2 Stalls.....	14.50
1698 Drive-Up Diner.....	11.50	1741 Pine Trees 6/pk.....	10.95	1775 Church.....	9.50
1699 Merry-Go-Round with Motor.....	25.95	1743 Gas Light.....	8.95	1776 Gas Station.....	5.95
1703 Fire Station.....	13.95	1744 Five Deciduous Trees.....	12.95	1777 Inn.....	6.95
1704 Public Swimming Pool.....	10.50	1745 Four Deciduous Trees.....	13.95	1778 Cable Car Set.....	17.95
1705 Saw Mill.....	10.50	1747 Half-Timbered House.....	14.00	1779 Two-Story Row Houses.....	10.50
1706 Terraced Houses 2pcs.....	7.95	1747A Scenic Material.....	3.95	1780 Quarry Buildings.....	11.95
1707 Kindergarten.....	8.95	1748 Spring Green Grass Mat 29x39".....	8.50	1781 Coaling Station.....	8.50
1708 Minehead Building.....	11.95	1750 Village Station "Heildenfeld".....	11.50	1782 Bungalow.....	6.75
1709 Liquid Gas Works.....	11.95	1751 Yard Tower.....	6.75	1783 Trackside Accessory Kit.....	5.50
1714 Industrial Plant.....	14.95	1752 Modern Railway Station.....	13.95	1784 Garden Fence.....	5.60
1719 32 Plugs & 8 Sockets.....	10.50	1753 Modern Passenger Platform.....	6.75	1785 Cement Truck.....	9.50
1720 Dual Lamp Station ARC Light.....	11.95	1754 Yard Tower.....	4.50	1786 Car Wash Facility.....	5.50
1721 Wooden Mast Street Light.....	10.95	1755 Lattice Mast Station Light.....	11.95	1787 Lineside Worker's House.....	6.50
1722 Dual Lamp Street Lamp.....	12.75	1756 City Railway Station.....	18.00	1788 Vehicles 8/pk.....	9.95
1723 Distribution Strips (2).....	6.75	1757 Yard Tower.....	9.50	1791 Nursery Buildings.....	5.50
1724 Set of Wooden Masts & Street Lights.....	26.95	1758 Train Shed.....	12.00	1792 Cottage & Barn.....	5.60
1725 Street Light.....	8.00	1759 Tunnel Portal 2pcs.....	4.95	1794 Scenic Materials.....	14.95
1727 Street Lamp.....	8.95	1760A Railway Station.....	6.50	1795 Wind Mill.....	9.95
1728 Lattice Mast Station ARC Light.....	10.75	1761 Single House.....	10.75	1796 Flowering Bushes.....	9.95
1729 Light Socket and Bulb (4).....	7.75	1761A Engine House.....	7.95	1797 Chapel.....	8.75
1730 Railroad Employees (6).....	6.75	1762 Arch Bridge.....	3.95	1798 Dairy Barn.....	5.95
		1763 Truss Bridge.....	3.95	1799 Six Deciduous Trees.....	14.95
		1764 Curved Bridge.....	3.95		

SEE YOUR AUTHORIZED MÄRKLIN DEALER FOR A CURRENT PRIMEX CATALOG!

Märklin, Inc.

P.O. Box 51319, 16988 W. Victor Road, New Berlin, WI 53151-0319

Marklin, Inc., is the American Subsidiary of Gebr. Marklin & Cie. GmbH, Germany, and the exclusive distributor in North America for Marklin Products.

Printed in USA Publication #2625

ITEM #	DESCRIPTION	SCALE	PRICE	ITEM #	DESCRIPTION	SCALE	PRICE
5200	M TRACK 17-1/8" R 30° PK/10	H	2.90/pc	5819	DB 2ND CL COMPARTMENT CAR	1	520.00
5201	M TRACK 17-1/8" R 15° PK/10	H	2.65/pc	5820	DB GONDOLA	1	147.00
5202	M TRACK TURNOUT R & L REMOTE (HOB)	H	73.50	5821	DB LOCAL COACH	1	212.00
5203	M TRACK TURNOUT LEFT REMOTE PK/2	H	73.50	5823	DB STAKE CAR	1	168.00
5204	M TRACK TURNOUT RIGHT REMOTE PK/2	H	73.50	5824	DB BOXCAR	1	160.00
5205	M TRACK 17-1/8" R 5° 43' PK/10	H	2.60/pc	5825	DB STAKE CAR W/TIES	1	160.00
5206	M TRACK 17-1/8" R 24° 17' PK/10	H	2.95/pc	5826	DB BOXCAR W/MARKER LIGHTS	1	242.00
5207	M TRACK DOUBLE SLIP REMOTE	H	57.00	5829	DB SIDE DUMP CAR	1	382.00
5208	M TRACK 5/16" STRAIGHT PK/10	H	2.35/pc	* 5831	"SCHWABENBRÄU" BEER CAR	1	395.00
5210	M TRACK 5/8" STRAIGHT PK/10	H	2.35/pc	5834	SBB APROZ BOXCAR	1	178.00
5211	M TRACK CROSSING 48° 30'	H	11.95	5835	DB SELF-DISCHARGING CAR	1	382.00
5213	M TRACK CURVED CIRCUIT TRACK 15°	H	8.95	* 5836	DB MAINTENANCE CAR	1	199.00
5214	M TRACK TURNOUT 3-WAY REMOTE	H	62.00	5837	GHMFFE INSULATED BOXCAR	1	479.00
5215	M TRACK CROSSING 24° 17' (HOB)	H	15.50	5838	KPEV GONDOLA	1	395.00
5221	M TRACK TURNOUT R & L MANUAL (HOB)	H	35.50	5839	SBB WINE BARREL CAR	1	625.00
5222	M TRACK TURNOUT LEFT MANUAL PK/2	H	35.50	5840	SBB GONDOLA	1	552.00
5223	M TRACK TURNOUT RIGHT MANUAL PK/2	H	35.50	5841	SBB BOXCAR	1	669.00
5260	M TRACK 17-7/8" R 30° 6/PK (HOB)	H	17.00	5844	SOB BOXCAR	1	598.00
5266	M TRACK 17-7/8" R 24° 4/PK (HOB)	H	12.00	5845	DB HARIBO BOXCAR (D) (L)	1	212.00
5501	DIGITAL KPEV FREIGHT TRAIN (L)	1	2889.00	5848	DB LOW SIDE CAR W/AUTOS (D) (L)	1	240.00
5502	PASSENGER TRAIN (L) (D)	1	3850.00	5849	KPEV STAKE CAR	1	485.00
5503	DIGITAL PASSENGER TRAIN SET	1	995.00	* 5854	WINE CAR	1	429.00
5504	DIGITAL TRACK CONSTR. TRAIN SET (D)	1	1115.00	* 5858	K. BAY. STS. B. GONDOLA	1	399.00
5505	DGTL DB CL 55 0-8-0 STEAM LOCO W/TENDER	1	3295.00	5878	DB TELESCOPING CAR (D)	1	457.00
5506	DGTL SWISS FREIGHT TRAIN (L)	1	3435.00	5880	DB EAOS GONDOLA	1	249.00
5507	DGTL DB CL 78 4-6-4T LOCO (D)	1	2100.00	5885	SBB EAOS GONDOLA	1	375.00
* 5509	DB CL 89.70-75 TANK LOCOMOTIVE	1	1875.00	5887	SBB GLAT CAR W/STAKES (D)	1	519.00
5510	NOSTALGIA PASSENGER TRAIN	1	995.00	5890	SBB BOXCAR (D)	1	599.00
5515	DIGITAL DB CL 55 0-8-0 LOCO	1	2995.00	5891	SBB GONDOLA	1	556.00
5516	DIGITAL ELECTRIC LOCO CL EG589 (L) (D)	1	3995.00	5892	SBB EAOS GONDOLA	1	376.00
5517	DIGITAL DB CL E91 ELECTRIC LOCO	1	4500.00	5893	SBB TELESCOPING CAR	1	495.00
5556	DIGITAL SBB CL Bø 6/8 ELECTRIC LOCO	1	2995.00	5894	SBB AVIA TANK CAR	1	350.00
5573	DIGITAL DB CL 212 DIESEL LOCO (D)	1	1375.00	5895	DB BOXCAR	1	442.00
5574	DIGITAL DB CL 323 DIESEL LOCO	1	1475.00	5896	DB GONDOLA	1	369.00
5577	DIGITAL SOB SWITCHING TRACTOR	1	1459.00	5897	DB VTG TANK CAR	1	349.00
5579	DIGITAL DBP DIESEL LOCO (D)(L)	1	1136.00	5898	DB TEXACO TANK CAR (L)	1	255.00
5598	DIGITAL DB CL 38 4-6-0 LOCO	1	2725.00	5899	CHEMISCHEN WERKE TANK CAR	1	398.00
5600	MANUAL UNCOUPLER (D)	1	7.50	5901	1 TRACK 11-3/4" STRAIGHT PK/10	1	125.00
5602	TRACK BUMPER	1	15.95	5908	1 TRACK 3-5/16" STRAIGHT PK/10 (D)	1	66.00
5603	TRACK RETAIN CLIPS PK/28 (D)	1	8.95	5909	1 TRK 3-5/16" STRAIGHT INSULATED (D)	1	11.00
5605	1 GAUGE CAR LIGHTING SET	1	36.75	5911	1 TRACK 2-3/8" STRAIGHT PK/10 (D)	1	66.00
5606	FEEDER CLIP SET	1	9.50	5912	1 TRACK 3-5/16" STRAIGHT PK/10	1	93.00
5607	TRACK BUMPER W/LIGHT	1	27.50	5913	1 TRACK 3-5/16" STRAIGHT INSULATED	1	12.50
5609	INSULATED RAIL JOINERS PK/10	1	11.00	5914	1 TRACK 2-3/8" STRAIGHT PK/10	1	93.00
5610	RETROFIT PROTOTYPE COUPLER KIT	1	34.00	5915	1 TRACK 5-7/8" STRAIGHT PK/10	1	104.00
5612	DISTANT SIGNAL (D)	1	91.00	5921	1 TRACK 23-5/8" R 30° PK/10 (D)	1	98.00
5613	HOME SIGNAL	1	152.00	5932	1 TRACK 40" R 22 30° PK/10 (D)	1	139.00
5614	DISTANT SIGNAL	1	152.00	5933	1 TRACK 40" R 22° 30' PK/10	1	186.00
5615	PASSENGER STATION KIT	1	158.00	5934	1 TRACK 46-5/16" R 2° 30' PK/10	1	189.00
5616	SIGNAL TOWER KIT	1	147.00	5962	1 TRACK TURNOUT LEFT REMOTE (D)	1	66.00
5617	LOCOMOTIVE SHED KIT	1	172.00	5963	T TRACK TURNOUT RIGHT REMOTE (D)	1	66.00
5618	COALING STATION KIT	1	135.00	5965	1 TRACK TURNOUT LEFT MANUAL (D)	1	55.00
5621	DIESEL FUELING STATION KIT	1	176.00	5966	1 TRACK TURNOUT RIGHT MANUAL (D)	1	55.00
5622	MARKER SIGNAL SET	1	22.50	5970	1 TRACK TURNOUT LEFT MANUAL	1	122.00
5625	TURNOUT MECHANISM FOR 5970/71	1	67.00	5971	1 TRACK TURNOUT RIGHT MANUAL	1	122.00
* 5627	BRAKE RIGGING KIT	1	29.95	5972	1 TRACK TURNOUT LEFT REMOTE (D)	1	84.50
5630	SBB CATENARY MAST PK/2	1	88.00	5973	1 TRACK TURNOUT RIGHT REMOTE (D)	1	84.50
5631	SBB CATENARY FEEDER MAST	1	63.75	5990	1 TRACK 11-3/4" STRAIGHT FEEDER (D)	1	27.50
5632	DB CATENARY MAST	1	44.00	5991	1 TRACK UNCOUPLER	1	88.00
5633	DB CATENARY FEEDER MAST	1	63.75	5992	1 TRACK 5-7/8" STRAIGHT FEEDER	1	32.85
5635	CATENARY WIRE 26" PK/10	1	52.50	5993	1 TRACK UNCOUPLER MODULE	1	156.00
5636	CATENARY WIRE 17" PK/10	1	52.00	5999	1 TRACK KIT	1	35.00
5650	DIGITAL BASIC SET	1	996.00	6000F	5 WIRE CABLE FOR COMMODORE	D	35.00
5707	DB CL 78 4-6-4T LOCOMOTIVE (D)	1	2112.00	6000G	5 WIRE CABLE FOR APPLE II & RADIO SHACK	D	35.00
5715	DB CL 55 0-8-0 LOCOMOTIVE (D)	1	2950.00	6000H	5 WIRE CABLE FOR MACINTOSH	D	35.00
5750	ADLER 4-CAR SET (D) (L)	1	4400.00	6000I	5 WIRE CABLE FOR IBM 9 PIN	D	38.00
5751	1935 ADLER TRAIN SET (D) (L)	1	2525.00	6000J	5 WIRE CABLE FOR IBM 25 PIN	D	38.00
5773	DB CL 212 DIESEL LOCOMOTIVE (D)	1	1375.00	6001	DIGITAL TRANSFORMER 42 WATTS 16V	D	136.00
5798	DB CL 38 4-6-0 LOCOMOTIVE (D)	1	2650.00	6015	DIGITAL BOOSTER	D	239.00
5800	GERMAN LOCAL COACH (D)	1	105.00	6016	DIGITAL BOOSTER 2-RAIL DC	D	258.00
5801	DB LOCAL COACH (D)	1	105.00	6018	DIGITAL BOOSTER FOR 1 GAUGE	1	265.00
* 5806	"GERMAN SHELL, INC." TANK CAR	1	375.00	6020	DIGITAL CONTROL UNIT FOR MÄRKLIN HO	D	359.00
* 5807	"PHOENIX, INC." TANK CAR	1	375.00	6023	DIGITAL CENTRAL CONTROL UNIT	D	489.00
5808	DB LOCAL BAGGAGE CAR (D)	1	289.00	6027	DIGITAL CONTROL UNIT FOR 2-RAIL DC	D	420.00
5810	DB 1ST/2ND CL LOCAL COACH	1	355.00	6030	DIGITAL CENTRAL CONTROL FOR 1 GAUGE	1	595.00
5811	DB 2ND CL LOCAL COACH (D)	1	399.00	6032	DIGITAL PROGRAMMER FOR DC LOCO	D	376.00
5815	KPEV 4TH CL COMPARTMENT CAR (D)	1	568.00	6036	DIGITAL CONTROL 80 F	D	294.00
5816	DB LOCAL BAGGAGE CAR	1	495.00	6038	DIGITAL 72" EXTENSION CABLE	D	79.00
5817	DB 1ST CL COMPARTMENT CAR	1	545.00	6039	DIGITAL 25" EXTENSION CABLE	D	73.00
5818	DB 2ND CL COMPARTMENT CAR	1	520.00	6040	DIGITAL KEYBOARD	D	259.00

Märklin, Inc. PO Box 51319, 16988 W. Victor Road, New Berlin, WI 53151-0319

American Subsidiary of Gebr. Märklin & Cie. GmbH, Germany and Exclusive Distributor in North America for Märklin Products

ITEM #	DESCRIPTION	SCALE	PRICE
6041	DIGITAL SWITCHBOARD	D	332.00
6043	DIGITAL MEMORY	D	385.00
6050	DIGITAL INTERFACE	D	244.00
6070	DIGITAL INFRA CONTROL 80 F	D	398.00
6071	DIGITAL IR CONTROL	D	240.00
* 6072	DIGITAL INFRA CONTROL 80 F EXTENSION CABLE	H	35.00
* 6073	DIGITAL TURNOUT DECODER	H	43.00
6074	DIGITAL K-87 DC DECODER	D	154.00
6080	DIGITAL C 80 LOCO DECODER PK/5	D	469.00
6081	DIGITAL C 81 LOCO DECODER PK/5	D	528.00
6082	DIGITAL C 82 LOCO DECODER PK/5	D	485.00
6083	DIGITAL K 83 ACCESSORY DECODER	D	99.00
6084	DIGITAL K 84 ACCESSORY DECODER	D	132.00
6085	DIGITAL C 85 LOCO DECODER 1 GAUGE	D	143.00
6086	DIGITAL K 86 ACCESSORY DECODER	D	129.00
6087	DIGITAL K 87 ACCESSORY DECODER	D	105.00
6088	DIGITAL S 88 TRACK DETEC MODULE	D	120.00
6089	DIGITAL EXTENSION CABLE FOR S88	D	26.75
* 6090	DIGITAL PROPULSION SET	D	159.00
* 6603	DELTA MODULE PK/5	H	295.00
* 6604	DELTA CONTROL UNIT	H	115.00
* 6605	DELTA PILOT HAND CONTROLLER	H	44.50
6606	IN/OUTDOOR TRAIN CONTROLLER	1	125.00
6627	TRANSFORMER 30 WATT 16 VOLT (HOB)	H	132.00
6667	TRANSFORMER 16 WATT 16 VOLT (D)	H	97.00
6727	TRANSFORMER 12 WATT 8 VOLT DC	Z	117.50
7000	WIRE STAPLES PK/50	S	3.50
7001	COUPLER GAUGE FOR MÄRKLIN HO	H	1.50
7003	K/M CATENARY FEEDER WIRE	H	2.35
7004	K/M CATENARY FASTENER HARDWARE	H	1.95
7005	CATENARY SET FOR M SIGNALS	H	22.50
7006	K/M CATENARY INSULATORS PK/10	H	11.00
7009	M CATENARY MAST PK/10	H	35.50
7010	M CATENARY FEEDER MAST	H	8.75
7012	M CATENARY SIGNAL FEEDER MAST	H	6.80
7013	K/M CATENARY WIRE 9" PK/20	H	2.08/pc
7014	K/M CATENARY WIRE 4" PK/10	H	1.18/pc
7015	K/M CATENARY WIRE 4" PK/10	H	1.18/pc
7016	K/M CATENARY CROSS SPAN 15" PK/5	H	6.95/pc
7017	K/M CATENARY CROSS SPAN 11" PK/5	H	5.90/pc
7018	K/M CATENARY WIRE 10" PK/20	H	1.90/pc
7019	K/M CATENARY WIRE 14" PK/20	H	2.05/pc
7021	K/M CATENARY TOWER MAST PK/5	H	5.20/pc
7022	K/M CATENARY WIRE 4" INSULATED PK/10	H	2.90/pc
7023	K/M CATENARY WIRE 4" PK/10	H	1.25/pc
7036	M TRACK DISTANT SIGNAL W/DISC	H	42.75
7038	M TRACK DISTANT SIGNAL W/DISC	H	59.00
7039	M TRACK HOME SIG W/SEMAPHORE (HOB)	H	45.50
7040	M TRACK HOME SIGNAL W/SEMAPHORES	H	54.85
7041	M TRACK HOME SIGNAL W/SEMAPHORES	H	65.50
7042	M TRACK YARD SIGNAL	H	47.00
7046	ARC LIGHT W/LATTICE MAST	H	15.00
7047	STREET LIGHT	H	11.00
7048	ARC LIGHT	H	14.00
7051	REMOTE CONTROL MAGNET CRANE	H	315.00
7072	CONTROL BOX FOR ACCESSORIES (HOB)	H	15.00
7074	CAR LIGHTING KIT PK/2	H	13.50
7076	PICKUP SHOE FOR 7079	S	3.50
7077	CAR LIGHTING KIT PK/5	S	25.50
7079	CAR MARKER LIGHT	S	6.60
7100	GRAY WIRE 33'	S	2.80
7101	BLUE WIRE 33'	S	2.80
7102	BROWN WIRE 33'	S	2.80
7103	YELLOW WIRE 33'	S	2.80
7105	RED WIRE 33'	S	2.80
7107	EXTENSION CABLE FOR 6606	S	15.85
7111	BROWN SOCKET PK/10	S	2.30
7112	YELLOW SOCKET PK/10	S	2.30
7113	GREEN SOCKET PK/10	S	2.30
7114	ORANGE SOCKET PK/10	S	2.30
7115	RED SOCKET PK/10	S	2.30
7117	GRAY SOCKET PK/10	S	2.30
7130	PLUG & SOCKET ASSORTMENT PK/100	S	21.00
7131	BROWN PLUG W/SOCKET PK/10	S	2.30
7132	YELLOW PLUG W/SOCKET PK/10	S	2.30
7133	GREEN PLUG W/SOCKET PK/10	S	2.30
7134	ORANGE PLUG W/SOCKET PK/10	S	2.30
7135	RED PLUG W/SOCKET PK/10	S	2.30
7137	GRAY PLUG W/SOCKET PK/10	S	2.30
7149	OILER PK/10	S	6.35/pc

ITEM #	DESCRIPTION	SCALE	PRICE
7151	HO TRACTION TIRE PK/10	S	2.65
7152	HO TRACTION TIRE PK/10	S	2.65
7153	HO TRACTION TIRE PK/10	S	2.65
7154	HO TRACTION TIRE PK/10	S	2.65
7155	CROSSING GATE SET	(P) H	43.50
7156	CONTROL BOX & WIRING SET	(P) S	20.75
7158	TRACK BUMPER	(P) H	11.00
7164	PICKUP SHOE	S	2.35
7169	PLUG & WIRE SET	(P) S	8.85
7171	M TRACK SOUND DEADENING KIT	H	9.00
7175	PICKUP SHOE PK/2	S	7.60
7180	****CONVERSION KIT	S	126.00
7181	HOME SIGNAL W/SEMAPHORE	(P) H	42.50
7182	COLOR LIGHT SIGNAL	(P) H	42.50
7183	PICKUP SHOE FOR 3021	S	3.85
7185	PICKUP SHOE	S	2.50
7186	REMOTE CONTROL TURNTABLE	H	329.00
7187	M TRACK COLOR LIGHT DISTANT SIGNAL	H	32.50
7188	M TRACK COLOR LGT HOME SIGNAL (HOB)	H	49.50
7190	M TRACK BUMPER (HOB)	H	6.75
7191	M TRACK BUMPER W/LIGHT	H	12.50
7192	M TRACK AUTO. CROSSING GATE SET	H	119.50
7193	EXTENSION SET FOR 7192	H	32.00
7194	REVERSE UNIT SPRINGS PK/5	S	1.65
7195	NUMBER PLATE SET	H	5.85
7197	CAR LIGHTING KIT F/4072 & 4073 (D)	S	18.50
7198	PICKUP SHOE FOR 7077	S	3.85
7201	M TRACK CATENARY FEEDER MAST	H	13.85
7203	CLOSE COUPLERS PK/50	S	50.00
7204	PROTOTYPE COUPLER REPRO. PK/50	S	16.50
7205	CONVERSION CLOSE COUPLER PK/50	S	50.00
7207	SCHEREN PANTOGRAPH	S	11.50
7208	SINGLE ARM PANTOGRAPH	S	18.85
7209	DISTRIBUTION STRIP	S	2.25
7210	CONTROL BOX FOR CIRCUITS	S	16.50
7211	CONTROL BOX FOR ON-OFF SWITCHES	S	18.00
7218	DOUBLE ARM PANTOGRAPH	S	12.00
7219	SINGLE ARM PANTOGRAPH	S	18.85
7224	HO REPAIRER	H	3.70
7226	SMOKE UNIT KIT	S	23.00
7230	K/M SIGNAL MOUNTING BRACKET	H	1.40
7234	K/M SIGNAL BRIDGE BASE PLATE PK/2	H	3.60
7236	K/M COLOR LIGHT DISTANT SIGNAL	H	31.50
7237	K/M COLOR LIGHT DISTANT SIGNAL	H	35.50
7238	K/M COLOR LIGHT DISTANT SIGNAL	H	63.00
7239	K/M COLOR LIGHT HOME SIGNAL	H	61.00
7240	K/M COLOR LIGHT HOME SIGNAL	H	63.50
7241	K/M COLOR LIGHT HOME SIGNAL	H	79.00
7242	K/M COLOR LIGHT YARD SIGNAL	H	63.50
7245	UNIVERSAL RELAY	H	36.50
7247	SINGLE ARM PANTOGRAPH	S	22.50
7250	BRIDGE PILLAR BASE 1/10" PK/10	H	11.00
7251	PILLAR BASE F/7250 1/8" PK/10	H	11.00
7252	BRIDGE PILLAR 1/4" PK/10	H	11.00
7253	BRIDGE PILLAR 1-3/16" PK 2	H	5.00
7262	K/M TRUSS BRIDGE 7-1/8"	H	13.50
7263	K/M ARCHED BRIDGE 14-1/8"	H	29.95
7267	K/M BRIDGE RAMP 14-1/8" R 30°	H	12.60
7268	K/M BRIDGE RAMP STRAIGHT 7-1/8"	H	11.75
7269	M BRIDGE RAMP 17-1/8" R 30°	H	14.50
7277	K/M CATENARY CROSSING SECTION PK/2	H	6.00
7278	K/M CATENARY WIRE 9" PK/10	H	19.00
7280	SINGLE LAMP STREET LIGHT	H	11.75
7281	STATION PLATFORM LIGHT	H	15.85
7282	DOUBLE LAMP STREET LIGHT	H	15.25
7283	LAMP WITH LATTICE MAST	H	15.25
7284	PARK LIGHT	H	9.50
7287	DIGITAL TURNTABLE EXTENSION KIT	H	35.00
7288	3-STALL ROUNDHOUSE KIT	H	98.00
7289	2-STALL LOCOMOTIVE SHED KIT	H	43.00
7292	M TRACK AUTO. CROSSING GATE SET	H	86.00
7293	EXTENSION SET FOR 7292	H	26.50
7294	AUTOMATIC TRANSFER TABLE	H	299.00
7295	CATENARY SET FOR 7294	H	33.00
7299	M TRACK MOUNTING SCREWS PK/200	H	6.00
7319	CURRENT-COND CLOSE COUPLER SET	H	38.50
7320	CAR LIGHTING KIT	H	19.00
7322	CAR LIGHTING KIT FOR 4090	H	13.85
7323	CAR LIGHTING KIT FOR 4107 & 4108	H	7.50
7329	CAR LIGHTING KIT	H	21.50

Märklin, Inc. PO Box 51319, 16988 W. Victor Road, New Berlin, WI 53151-0319

American Subsidiary of Gebr. Märklin & Cie. GmbH, Germany and Exclusive Distributor in North America for Märklin Products

ITEM #	DESCRIPTION	SCALE	PRICE	ITEM #	DESCRIPTION	SCALE	PRICE
7330	CAR LIGHTING KIT	H	21.50	8500	Z TRACK 4-3/8" STRAIGHT PK/10	Z	2.45/pc
7332	CAR LIGHTING KIT FOR 2660/2660 (D)	H	25.00	8503	Z TRACK 2-3/16" STRAIGHT PK/10	Z	2.20/pc
7333	CAR LIGHTING KIT	H	21.50	8504	Z TRACK 1" STRAIGHT PK/10	Z	2.20/pc
7335	LIGHTING KIT FOR 4275-4278, 4238-4239	H	22.50	8505	Z TRACK 8-13/16" STRAIGHT PK/10	Z	2.95/pc
7339	M TRACK MAN. COLOR LIGHT SIGNAL (HOB)	H	33.50	8506	Z TRACK 4-5/16" STRAIGHT PK/10	Z	2.45/pc
7389	TRACK BUMPER W/LED LIGHT	H	11.00	8507	Z TRACK 4-7/16" STRAIGHT PK/10	Z	2.45/pc
7390	M MECHANICAL CROSSING GATE SET (HOB)	H	45.00	8510	Z TRACK 5-3/4" R 45° PK/10	Z	2.60/pc
7391	K/M TRACK BUMPER	H	4.85	8520	Z TRACK 7-11/16" R 45° PK/10	Z	2.80/pc
7500	K TRACK GROUND TERMINAL	H	1.95	8521	Z TRACK 7-11/16" R 30° PK/10	Z	2.60/pc
7501	K TRACK CATENARY FEEDER MAST	H	13.85	8529	Z TRACK CURVED CIRCUIT TRACK 30°	Z	12.00
7504	K TRACK CENTER STUD TERMINAL	H	2.50	8530	Z TRACK 8-11/16" R 45° PK/10	Z	2.80/pc
7505	CATENARY SET FOR K/M SIGNALS	H	22.00	8531	Z TRACK 8-11/16" R 30° PK/10	Z	2.65/pc
7509	K TRACK CATENARY MAST PK/10	H	35.50	8539	Z TRACK CURVED CIRCUIT TRACK 30°	Z	12.00
7510	K CATENARY FEEDER MAST	H	8.75	8559	Z TRACK CROSSING 13°	Z	17.50
7511	K/M CATENARY BRIDGE MAST PK/10	H	37.00	8560	Z TRACK DOUBLE SLIP REMOTE	Z	55.00
7512	K CATENARY SIGNAL FEEDER MAST	H	7.00	8562	Z TRACK TURNOUT LEFT REMOTE	Z	37.50
7522	K TRACK INSULATOR PK/5	H	4.00	8563	Z TRACK TURNOUT RIGHT REMOTE	Z	37.50
7525	K/M CATENARY SUPPORT ARM PK/10	H	24.50	8565	Z TRACK TURNOUT LEFT MANUAL	Z	23.50
7548	UNDER LAYOUT MOUNTING KIT	H	12.95	8566	Z TRACK TURNOUT RIGHT MANUAL	Z	23.50
7549	TURNOUT MECHANISM FOR 2271 & 2275	H	22.00	8568	Z TRACK TURNOUT CURVE LEFT REMOTE	Z	42.00
7555	CONTACT REED SWITCH SET	H	12.95	8569	Z TRACK TURNOUT CURVE RIGHT REMOTE	Z	42.00
7556	MAGNET SET FOR 7555	H	12.95	8587	Z TRACK UNCOUPLER TRACK	Z	21.75
7557	MAGNET SET FOR LOCOS 3/PK	S	12.95	8588	Z TRACK STRAIGHT ISOLATING TRACK	Z	6.60
7558	MAGNET SET FOR CARS 2/PK	S	12.95	8589	Z TRACK STRAIGHT CIRCUIT TRACK	Z	11.00
7569	K BRIDGE RAMP 16-3/4" R 30°	H	14.50	8590	Z TRACK 4-3/8" STRAIGHT FEEDER TRACK	Z	7.75
7585	HO INSULATED WHEEL SET PK/2	H	5.95	8591	Z TRACK 19-1/4" R PK/10	Z	2.60/pc
7586	HO INSULATED WHEEL SET PK/4	H	6.35	8592	Z TRACK 4-3/4" (ADJUSTABLE) PK/10	Z	7.45/pc
7587	HO INSULATED WHEEL SET PK/3	H	5.75	8594	Z TRACK 28" FLEX PK/10	Z	8.60/pc
7588	HO INSULATED WHEEL SET PK/4	H	7.50	8600	DB REFRIGERATOR CAR	Z	16.85
7589	HO INSULATED WHEEL SET PK/4	H	7.50	8601	KSSTE GONDOLA W/HINGED COVERS	Z	34.00
7592	K TRACK AUTO CROSSING GATE SET	H	89.50	8602	DRG ALSACE-LORRAINE BOXCAR	Z	34.00
7593	EXTENSION SET FOR 7592	H	27.00	8603	SBB PIGGYBACK CAR	Z	39.00
7595	K TRACK RAIL JOINERS FOR 2205	H	6.35	8604	ÖBB PIGGYBACK CAR	Z	39.00
7599	K TRACK MOUNTING SCREWS PK/200	H	7.85	* 8607	"VTG" TANK CAR	Z	32.00
7651	DIGITAL ROTARY CRANE	D	465.00	8609	DB FREIGHT BAGGAGE CAR	Z	21.00
7686	DIGITAL TURNTABLE	H	559.00	8610	DB LOW SIDE GONDOLA	Z	12.50
8104	PRUSSIAN PASSENGER TRAIN SET (D)	Z	292.00	8611	DB SHELL TANK CAR	Z	18.50
8108	ORIENT EXPRESS TRAIN SET	Z	498.00	8612	DB ESSO TANK CAR	Z	18.50
8112	DB CHIEMGAU RAILBUS SET	Z	179.00	8613	DB ARAL TANK CAR	Z	18.50
8119	KPEV LANGENSCHWALBACH TRAIN	Z	489.00	8614	DB BP TANK CAR	Z	18.50
* 8128	LUFTHANSA AIRPORT EXPRESS SET	Z	375.00	8617	DB MÄRKLIN CONTAINER CAR	Z	17.75
8130	PROVINCIAL RR FREIGHT SET	Z	329.00	8619	DB LUMBER CAR SET	Z	31.50
8131	ALLGÄU-ZOLLERN TRAIN SET (D) (L)	Z	342.00	8620	DB TRANSFORMER CAR	Z	36.00
8133	DRG RHEINGOLD TRAIN SET	Z	495.00	8622	DB GONDOLA	Z	14.75
8134	DBP MAIL TRAIN SET (D) (L)	Z	242.00	8623	DB BOXCAR W/SLIDING ROOF & WALLS	Z	31.00
* 8137	RAG FREIGHT TRAIN	Z	325.00	8624	DB BALLAST CAR	Z	27.50
* 8138	PROVINCIAL RAILROAD COAL TRAIN	Z	269.00	8625	DB SHELL TANK CAR	Z	31.00
8160	DELUXE STEAM STARTER SET (D)	Z	565.00	8626	DB ESSO TANK CAR	Z	31.00
8182	SMALL STEAM STARTER SET	Z	199.00	8627	DB ARAL TANK CAR	Z	31.00
8190	E MANUAL TRACK EXTENSION SET	Z	74.00	8628	DB BP TANK CAR	Z	31.00
8191	E ELECTRIC TRACK EXTENSION SET	Z	125.00	8629	DEA TEXACO TANK CAR	Z	18.50
8192	T1 ELECTRIC TRACK EXTENSION SET	Z	130.00	8630	DB HOPPER CAR	Z	29.50
8193	T2 ELECTRIC TRACK EXTENSION SET	Z	125.00	* 8631	"VELTINS BREWERY" BEER CAR	Z	18.00
8194	T3 ELECTRIC TRACK EXTENSION SET	Z	187.50	* 8632	"DYCKERHOFF" COMPANY SILO CAR	Z	34.50
8198	CATENARY SET FOR S&E	Z	114.00	8635	DB BOXCAR WITH SLIDING ROOF	Z	31.00
8199	CATENARY SET FOR T1&T2&T3	Z	244.00	† 8636	SANTA FE CABOOSE	Z	41.50
8304	SNCF MICHELJINE RAILBUS-HAMO (E)	H	295.00	† 8637	MILWAUKEE ROAD BOXCAR	Z	31.50
8312	HAMO K.W.ST.E. CL T5 LOCO (D)	H	233.00	† 8638	READING GONDOLA (D)	Z	29.50
8321	HAMO SNCF CL BB 15 000 ELEC LOCO (E)	H	309.00	8639	DRG BOXCAR W/BRAKEMAN'S CAB	Z	25.50
8323	HAMO SBB CL Re 4/4 ELEC (D)	H	218.00	† 8640	SOUTHERN PACIFIC CABOOSE (D)	Z	41.50
8324	HAMO NS CL 1100 ELEC LOCO (D)	H	218.00	† 8641	UNION PACIFIC BOXCAR (D)	Z	31.50
8327	HAMO NS CL 1100 ELEC LOCO (D)	H	218.00	† 8642	SOO LINE GONDOLA	Z	29.50
8334	HAMO SNCF CL BB 26000 ELEC LOCO (D)	H	396.00	8644	DB MÄRKLIN Z CONTAINER CAR	Z	17.85
8356	HAMO SBB CL Be 6/8 ELEC LOCO (D)	H	329.00	8647	DB STAUFENBRAU BEER CAR	Z	17.75
8366	HAMO DB CL 152 ELEC LOCO (D)	H	260.00	8648	DB DINKELACKER BEER CAR	Z	17.75
8386	HAMO NS PTT POSTAL RAILCAR (D)	H	395.00	8649	K.W.ST.E. BOXCAR	Z	27.50
8388	NS HAMO POSTAL RAILCAR (D)	H	298.00	8650	DB EAOS GONDOLA	Z	31.00
8400D	AUTO COMPANIES 6-CARS	Z	SEE YOUR DEALER	8651	SBB EAOS GONDOLA	Z	31.00
8401	CHALET "ST. MORITZ" (D)	Z	37.50	8652	SBB EAOS GONDOLA	Z	31.00
8402	FARM HOUSE "SILVAPLANA" (D)	Z	37.50	8653	SBB TELESCOPING CAR	Z	32.00
8404	ALPINE BARN W/WATER TROUGH (D)	Z	37.50	8655	DB STAKE CAR	Z	36.00
8405	ALPINE BARN "NAUDERS" (D)	Z	37.50	8656	SBB SLIDING WALL BOXCAR	Z	32.50
8406	ALPINE HUT "SCHONJOCHL" (D)	Z	37.50	8657	DB CRANE CAR SET	Z	49.95
8407	MILL "SERFAUS" (D)	Z	37.50	8658	OLDENBURG STAKE CAR	Z	31.00
8408	MOUNTAIN CHALET "STUBEN" (D)	Z	37.50	8659	DB VTG TANK CAR	Z	18.50
8409	FARM HOUSE "SYKE" (D)	Z	35.50	8660	DB EVA TANK CAR	Z	31.00
8410	FISHERMAN COTTAGE "PELLWORM" (D)	Z	35.50	8661	"FÜRSTENBERG" BEER CAR	Z	31.50
8411	THATCHED COTTAGE "PLOW" (D)	Z	35.50	8662	DB FLATCAR W/TRUCK & TRAILER	Z	39.00
8412	NORTH FRISIAN HOUSE "SYLT" (D)	Z	35.50	8663	MUNICH BEER CAR SET	Z	115.00
8471	HAMO DB ICE COACH (D)	H	86.00	8664	BARUM CIRCUS CAR SET	Z	205.00

8/67

Märklin, Inc. PO Box 51319, 16988 W. Victor Road, New Berlin, WI 53151-0319

American Subsidiary of Gebr. Märklin & Cie. GmbH, Germany and Exclusive Distributor in North America for Märklin Products

ITEM #	DESCRIPTION	SCALE	PRICE	ITEM #	DESCRIPTION	SCALE	PRICE
8665	DB LOW SIDE GONDOLA W/TARP	Z	15.50	8780	DB 2ND CL CITY BAHN COACH	Z	37.50
8666	DB SILO CAR	Z	34.00	8781	DB 1ST/2ND CL CITY BAHN COACH	Z	37.50
* 8667	"ETRA" TANK CAR	Z	32.00	8782	DB 2ND CL CITY BAHN COMM CAR W/BAGG.	Z	73.50
8668	DB BOXCAR W/HINGED ROOF	Z	36.50	8784	SOUTHERN PACIFIC COACH	Z	35.00
* 8669	"EINBECK BREWERY" BEER CAR	Z	18.00	8785	SOUTHERN PACIFIC DINING CAR	Z	35.00
† 8670	BURLINGTON NORTHERN CABOOSE (D)	Z	41.50	8787	SOUTHERN PACIFIC VISTA DOME CAR	Z	37.00
† 8671	WESTERN PACIFIC BOXCAR (D)	Z	31.50	8788	SOUTHERN PACIFIC BAGGAGE CAR	Z	35.00
† 8672	FRISCO BOXCAR (D)	Z	31.50	8789	SOUTHERN PACIFIC OBSERVATION CAR	Z	37.00
† 8673	NEW HAVEN BOXCAR (D)	Z	31.50	8802	TRACK CLEANING CAR	Z	115.00
† 8674	NEW YORK CENTRAL GONDOLA (D)	Z	29.50	8803	DB CL 24 2-6-0 LOCOMOTIVE	Z	147.00
† 8677	RIO GRANDE BOXCAR	Z	31.50	8804	DB CL 260 DIESEL LOCOMOTIVE	Z	121.00
† 8678	PENNSYLVANIA GONDOLA	Z	29.50	8805	DB CL 89 0-6-0T LOCOMOTIVE	Z	115.00
† 8679	SOUTHERN CABOOSE	Z	41.50	8806	DB CL 78 4-6-4T STEAM LOCOMOTIVE	Z	278.00
† 8680	NEW YORK CENTRAL CABOOSE	Z	41.50	† 8807	SOUTHERN 2-8-2 LOCOMOTIVE	Z	229.00
† 8681	ILLINOIS CENTRAL BOXCAR	Z	31.50	† 8808	NEW YORK CENTRAL 2-8-2 LOCO	Z	229.00
† 8682	RAIL-BOX BOXCAR	Z	31.50	8809	SOUTHERN PACIFIC DAYLIGHT F7 DIESEL LOCO	Z	188.00
† 8683	RAIL-GON GONDOLA	Z	29.50	8816	DB CL 798 RAILBUS	Z	115.00
† 8684	MOBILGAS TANK CAR	Z	42.00	8817	DB CL 998 RAILBUS TRAILER	Z	45.00
8685	DB COVERED HOPPER CAR	Z	30.00	8820	DB CL 221 DIESEL LOCOMOTIVE	Z	182.00
† 8692A	ONTARIO NORTHLAND BOXCAR	Z	39.95	8822	DB CL 194 ELECTRIC LOCO	Z	275.00
† 8693A	GREAT NORTHERN BOXCAR	Z	39.95	8823	SBB CL Pe 4/4 ELECTRIC LOCO	Z	244.00
† 8694A	BALTIMORE & OHIO BOXCAR	Z	39.95	8824	DB CL 194 ELECTRIC LOCOMOTIVE	Z	275.00
† 8695A	BOSTON & MAINE BOXCAR	Z	39.95	8825	DB CL 144 ELECTRIC LOCOMOTIVE	Z	239.00
† 8696A	THE ROCK BOXCAR	Z	39.95	8826	DB CL 151 ELECTRIC LOCOMOTIVE	Z	239.00
8700	K.W.ST.E. LOCAL COACH	Z	18.75	8827	DB CL 41 2-8-2 LOCOMOTIVE	Z	220.00
8701	K.W.ST.E. LOCAL COACH	Z	18.75	8838	DB CL 139 ELECTRIC LOCO	Z	218.00
8703	DB LOCAL BAGGAGE CAR	Z	30.00	8839	DB CL 110 ELECTRIC LOCO (D)	Z	218.00
8704	DB 2ND CL COMPARTMENT CAR	Z	30.00	8840	DB CL 140 ELECTRIC LOCO	Z	195.00
8705	DB 2ND CL COMPARTMENT CAR W/BRK CAB	Z	33.50	8841	DB CL 110 ELECTRIC LOCO	Z	218.00
8706	DB 1ST/2ND CL LOCAL COACH	Z	30.00	8842	DB CL 111 ELECTRIC LOCO (D)	Z	177.00
8707	DB 2ND CL LOCAL COACH	Z	30.00	8843	DB CL 111 ELECTRIC LOCO	Z	210.00
8708	DB 2ND CL COACH W/BAGGAGE AREA	Z	30.00	8847	SBB CL Pe 4/4 ELECTRIC LOCO	Z	244.00
8710	DB 1ST CL EXPRESS COACH	Z	28.75	8848	DB CL 120.1 ELECTRIC LOCO	Z	199.00
8711	DB 2ND CL EXPRESS COACH	Z	28.75	8849	SBB CL Ae 6/6 ELECTRIC LOCO	Z	223.00
8712	DB EXPRESS BAGGAGE CAR	Z	28.75	8850	SBB CL Ae 6/6 ELECTRIC LOCO	Z	218.00
8713	DB DINING CAR	Z	28.75	8851	SBB CL Ae 3/6 ELECTRIC LOCO	Z	245.00
8715	DB AUTO CARRIER	Z	36.50	8853	DB CL 120 ELECTRIC LOCO (D)	Z	195.00
8716	DB 2ND CL COMMUTER COACH	Z	31.00	8854	DB CL 103 ELECTRIC LOCO	Z	199.00
8717	DB 1ST/2ND CL COMMUTER COACH	Z	31.00	8855	DB CL 111 ELECTRIC LOCO (D)	Z	178.00
8718	DB 2ND CL COMMUTER CAB COACH	Z	66.50	8856	SBB CL Be 6/8 ELECTRIC LOCO	Z	288.00
8720	DB 1ST CL EXPRESS COACH (D)	Z	29.50	8858	DB CL 151 ELECTRIC LOCO (D)	Z	215.00
8721	DB 2ND CL EXPRESS COACH (D)	Z	29.50	† 8860	SANTA FE F7 DIESEL LOCO	Z	178.00
8722	DB EXPRESS BAGGAGE CAR (D)	Z	29.50	† 8861	SOUTHERN PACIFIC F7 DIESEL LOCO (D)	Z	178.00
8723	DB DINING CAR (D)	Z	29.50	† 8863	BURL NORTHERN F7 DIESEL LOCO (D)	Z	178.00
8724	DB TEE/IC 1ST CL COACH	Z	29.50	8864	DB CL 260 DIESEL LOCOMOTIVE	Z	115.00
8725	DB TEE/IC 1ST CL COACH	Z	29.50	8866	DB CL V160 DIESEL LOCO	Z	210.00
8726	DB TEE/IC DINING CAR	Z	29.50	8867	DB CL 103 ELECTRIC LOCO	Z	205.00
8727	DB TEE/IC DINING CAR	Z	48.75	8870	KING LUDWIG CL S 3/6 LOCO	Z	247.00
8728	DB TEE VISTA DOME CAR	Z	38.95	8871	DB ICE TRAIN	Z	588.00
8730	K.BAY.STS.E. 3RD CL COACH	Z	29.50	8878	DB CL 218 DIESEL LOCO	Z	175.00
* 8734	DB IC 1ST CL COACH	Z	37.50	8879	DB CL 218 DIESEL LOCO	Z	175.00
8736	8726 W/LIGHTS (D)	Z	48.95	8880	DB CL 218.217 DIESEL LOCO (D)	Z	189.00
8737	8727 W/LIGHTS (D)	Z	67.85	8884	DB CL 050 2-10-0 LOCO	Z	275.00
8738	8728 W/LIGHTS (D)	Z	58.00	8885	DB CL 003 4-6-2 LOCO	Z	205.00
8739	K.W.ST.E. LOCAL COACH	Z	18.50	8892	K.BAY.STS.E. 4-6-2 LOCO	Z	217.00
8742	SBB SLUMBER COACH (D)	Z	34.85	8893	DB CL 18.4 4-6-2 LOCO (D)	Z	205.00
8743	DB 1ST CL INTERREGIO COACH	Z	29.00	8895	DB CL 74 2-6-0T LOCO	Z	125.00
8744	DB 2ND CL INTERREGIO COACH	Z	29.00	8896	DB CL 86 2-8-2T LOCO	Z	205.00
8745	SBB 1ST CL EXPRESS COACH	Z	36.50	8899	DB CL 038 4-6-0 LOCO	Z	182.00
8746	SBB 2ND CL EXPRESS COACH	Z	36.50	8911	Z CATENARY MAST PK/10	Z	24.50
8747	SBB DINING CAR	Z	58.00	8912	Z CATENARY FEEDER MAST	Z	6.95
8748	SBB 3RD CL EXPRESS COACH	Z	41.00	8913	Z CATENARY BRIDGE MAST PK/10	Z	24.50
8749	SBB EXPRESS BAGGAGE CAR	Z	41.00	8914	Z CATENARY TOWER MAST PK/10	Z	39.50
8750	DB 1ST/2ND CL LOCAL COACH	Z	31.00	* 8916	TRUCK SET W/2 SEMI TRUCKS	Z	29.00
8751	DB 2ND CL LOCAL COACH	Z	31.00	* 8917	FIRE TRUCK SET	Z	43.00
8752	DB LOCAL BAGGAGE CAR	Z	31.00	8918	SET OF TRUCKS 2/PK	Z	8.95
8753	DB 1ST/2ND CL LOCAL COACH	Z	35.75	8921	Z CATENARY INSULATORS PK/10	Z	6.90
8754	DB 2ND CL LOCAL COACH	Z	35.75	8922	Z CATENARY WIRE 6-1/2" PK/10	Z	21.00
8755	DB 2ND CL COACH W/BAGGAGE AREA	Z	39.50	8923	Z CATENARY WIRE 7-1/8" ADJUSTABLE PK/10	Z	37.50
8757	DB BAGGAGE CAR	Z	29.50	8924	Z CATENARY CROSS SPAN 4-7/8" PK/10	Z	74.00
8758	DB IC 1ST CL EXPRESS COACH	Z	34.50	8925	Z CATENARY CROSS SPAN 2-7/8" PK/10	Z	62.00
8759	DB IC 2ND CL EXPRESS COACH	Z	34.50	8926	Z CATENARY HARDWARE KIT	Z	6.00
8768	DB LANGENSCHWALBACHER CAR SET	Z	198.00	8927	Z CATENARY FEEDERS W/WIRE	Z	4.95
* 8769	"KING LUDWIG" CAR SET	Z	529.00	8931	Z TRACK BUMPER W/LIGHT	Z	11.50
8771	DB ICE COACH	Z	83.75	8939	Z COLOR LIGHT HOME SIGNAL	Z	29.00
8772	DB IC 1ST CL EXPRESS COACH	Z	36.50	8940	Z HOME SIGNAL W/SEMAPHORE	Z	57.00
8773	DB IC 2ND CL EXPRESS COACH	Z	36.50	8945	Z UNIVERSAL RELAY	Z	34.00
8774	DB IC BORD RESTAURANT CAR	Z	49.00	8946	Z MANUAL SIGNAL CONTROLLER	Z	17.90
8776	DB TRACK MAINTENANCE CAR SET	Z	152.00	8947	DOUBLE POLE/DOUBLE THROW RELAY	Z	42.00
8778	ORIENT EXPRESS LOUNGE CAR (D)	Z	58.50	8950	BUILDING INTERIOR LIGHTING KIT	Z	6.95

Märklin, Inc. PO Box 51319, 16988 W. Victor Road, New Berlin, WI 53151-0319

American Subsidiary of Gebr. Märklin & Cie. GmbH, Germany and Exclusive Distributor in North America for Märklin Products

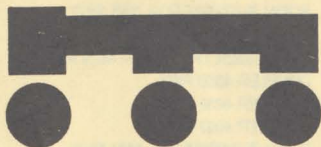
ITEM #	DESCRIPTION	SCALE	PRICE	ITEM #	DESCRIPTION	SCALE	PRICE
8952	SET OF AUTOS PK/4	Z	9.00	21708	COUPLER FOR 3050 PK/2	S	2.90
8953	LIGHT BULB INSERT	Z	3.95	21745	ARMATURE	S	19.35
8954	INSULATED AND REGULAR RAIL JOINERS PK/30	Z	6.50	21773	COUPLER FOR 3038 PK/2	S	2.90
8955	DOUBLE ARM PANTOGRAPH	Z	11.85	21783	COUPLER FOR 3055-63-65 PK/4	S	3.00
8956	SINGLE ARM PANTOGRAPH	Z	14.75	21842	COUPLER F4631-35-3315 + PK/2	S	2.90
8957	STREET LIGHT	Z	12.50	21843	COUPLER PK/4	S	1.40
8958	STATION LIGHT	Z	12.50	21899	REVERSE UNIT FOR 3028-76	S	40.95
8959	PARK LIGHT	Z	12.00	21929	COUPLER SHANK PK/2	S	2.90
8961	STATION PLATFORM KIT	Z	15.50	21951	COUPLER FOR 3071 PK/2	S	8.10
8970	RURAL STATION KIT	Z	21.00	21954	3071 COUPLER SHANK LONG PK/2	S	5.50
8971	RURAL FREIGHT SHED KIT	Z	16.95	22049	REVERSE UNIT FOR 3071	S	40.95
8972	CONTAINER TERMINAL SET (D)	Z	24.00	22218	FIELD COIL	S	11.70
8974	Z GAUGE RERAILER	Z	2.35	22220	FIELD COIL	S	11.70
8975	Z ARCHED BRIDGE 8-5/8"	Z	13.00	22313	COUPLER F/3054 3357-58 PK/4	S	3.00
8976	Z BRIDGE RAMP STRAIGHT 4-3/8" PK/2	Z	9.99	22418	COUPLER W/SPRING PK/2	S	5.50
8977	Z BRIDGE RAMP CURVED 5-3/4" R PK/2	Z	9.99	22532	COUPLER W/SPRING PK/2	S	8.10
8978	Z APPROACH RAMP PILLAR SET	Z	12.75	22897	TELEX COUPLER HOOK F/3096 PK/4	S	1.40
8979	Z BRIDGE PILLAR SET PK/5	Z	6.80	22924	TELEX COIL F/3096	S	19.35
8980	2-STALL LOCOMOTIVE SHED KIT	Z	58.00	22970	REVERSE UNIT F/3031/47-65	S	40.95
8981	1-STALL LOCOMOTIVE SHED KIT	Z	47.00	23139	FIELD COIL	S	11.70
8982	COALING STATION KIT	Z	19.75	23144	ARMATURE - ROUND COMMUTATOR	S	19.35
8983	3-STALL ROUNDHOUSE KIT	Z	98.00	23755	FIELD COIL F/3106-51	S	6.90
8985	FREIGHT STATION ACCESSORIES	Z	16.85	23846	PANTOGRAPH	S	19.35
8986	RIGHT-OF-WAY DETAIL SET	Z	19.35	24166	PANTOGRAPH	S	19.35
8987	Z GAUGE BRUSH SET	Z	2.75	24281	COUPLER F/3106	S	2.75
8988	Z GAUGE BRUSH SET	Z	2.75	24456	FRONT COUPLER F3309 PK/2	S	1.50
8989	Z GAUGE BRUSH SET	Z	2.75	24457	FRONT COUPLER F3309 PK/10	S	3.50
8991	Z TRACK BUMPER	Z	3.85	24460	REAR COUPLER F3309 PK/4	S	3.00
8992	Z TRACK CROSSING GATE SET	Z	79.50	24461	REAR COUPLER F3309 PK/4	S	3.00
8993	Z TRACK REVERSE LOOP KIT	Z	22.50	24800	PANTOGRAPH F3167	S	11.70
8994	AUTOMATIC TRANSFER TABLE	Z	312.00	24810	COUPLER F3323-28-30 PK/4	S	3.00
8995	CATENARY SET FOR 8994	Z	39.95	25069	PANTOGRAPH FOR 3350-3650	S	11.70
8996	WATER TOWER KIT	Z	14.00	25220	REVERSE UNIT F3300 SERIES	S	27.30
8997	TURNTABLE EXTENSION SET	Z	49.95	25402	ICE COUPLER ASSEMBLY - MALE	S	19.35
8998	AUTOMATIC TURNTABLE	Z	385.00	25434	ICE COUPLER ASSEMBLY - FEMALE	S	19.35
8999	Z TRACK NAILS PK/100	Z	2.35	25445	PANTOGRAPH FOR 3371	S	19.35
15701	91/92 HO,Z,1 CATALOG/PRICE LIST	P	9.95	25530	PANTOGRAPH	S	11.70
15810	1992 NEW ITEMS BROCHURE	P	N/C	25640	PANTOGRAPH FOR 3125	S	11.70
15900	SCHEMATICS/PARTS MANUAL	S	67.50	25776	COUPLER FOR 3329-3629	S	1.50
16311	90/91 METALL CATALOG	P	1.40	25783	PANTOGRAPH FOR 3329	S	6.90
16511	HOBBY BROCHURE	P	N/C	25827	PANTOGRAPH	S	11.70
17446	91/92 PRIMEX CATALOG	P	1.40	25953	PANTOGRAPH	S	19.35
19001	MINI CLUB SCREWDRIVER 2MM	S	2.80	26373	COUPLER 2/PK	S	5.50
19002	HO SCREWDRIVER 2.9MM	S	2.00	26906	BULB FOR 8871	S	11.70
19003	SOCKET WRENCH 3.0MM	S	3.00	27080	RIO GRANDE SET (3062/4062)	S	255.00
19004	SOCKET WRENCH 3.5MM	S	3.00	27150	PICKUP SHOE FOR 4228	S	11.70
19005	TOOL SET AND CASE	S	14.95	27214	COUPLER FOR 4228 PK/2	S	8.10
19032	STICKER "MÄRKJN CROCODILE" PK/10	S	4.00	27291	CLOSE COUPLER (70157 & 70158) PK/2	S	5.50
19033	STICKER "I LOVE MÄRKJN" PK/10	P	4.00	27756	PICKUP SHOE FOR 7333	S	6.90
19035	STICKER "ICH DAMPFE DIGITAL" PK/10	P	4.00	28027	PICKUP SHOE FOR 3315 (L)	S	4.05
19036	STICKER "MÄRKJN LOGO" PK/10	P	4.00	28049	PANTOGRAPH FOR 3330-3160	S	19.35
19051	INSIDE WINDOW STICKER	P	5.00	28251	PICKUP SHOE FOR 35144	S	6.90
19052	ALPHA INSIDE SIGN (24" X 8")	P	7.00	29544	COUPLER FOR 3032 PK/2	S	5.50
19053	METALL INSIDE SIGN (24" X 8")	P	7.00	29847	COUPLER FOR 3065-3131-41	S	2.75
19054	DIGITAL SIGN (24" X 8")	D	6.00	30256	PASSENGER TRUCK FOR 4076 PK/2	S	23.40
19098	RING BINDER FOR MAGAZINE	S	18.95	30339	PASSENGER TRUCK FOR 4028 PK/2	S	23.40
19577	DIGITAL CARRIER BAG 45 X 56 CM PK/25	P	7.00	30417	PASSENGER TRUCK FOR 4049 PK/2	S	13.80
20001	COUPLER PK/10	S	3.50	30547	PASSENGER TRUCK FOR 4066 PK/2	S	23.40
20068	ARMATURE	S	19.35	31051	PICKUP SHOE FOR 4103	S	11.70
20157	SLIDER	S	2.75	31100	PICKUP SHOE FOR 4160	S	6.90
20214	COUPLER LONG SHANK PK/2	S	5.50	31101	PANTOGRAPH FOR 4153	S	19.35
20293	ARMATURE F/3021	S	19.35	31545	PICKUP SHOE	S	6.90
20381	TRUCK COUPLING F/3005-27+	S	2.75	32136	BOOM SUPPORT FOR 4671 PK/2	S	2.90
20580	ARMATURE F/3048-47	S	19.35	32289	TRUCK FOR 4563 PK/2	S	23.40
20637	PICKUP SHOE FOR 3376	S	6.90	32339	PASSENGER TRUCK FOR 4624 PK/2	S	13.80
20780	PANTOGRAPH, OLD STYLE	S	19.35	32399	COUPLER 4650 PK/2	S	5.50
20824	REVERSE UNIT	S	19.35	32402	COUPLER 4632 PK/2	S	5.50
20989	COUPLER FOR 3016 PK/2	S	5.50	32540	COUPLER 4067 + PK/2	S	2.90
21005	COUPLER FOR 4018 PK/2	S	5.50	33545	BOOM SUPPORT FOR 8621 PK/2	S	5.50
21128	COUPLER WITH SPRING PK/2	S	8.10	32570	TRUCK FOR 4574 PK/2	S	23.40
21166	COUPLER FOR 3021 PK/2	S	5.50	35007	M-TRACK RAIL JOINER PK/10	S	3.50
21201	PICKUP SHOE	S	4.05	35308	TURNOUT SPRING PK/10	S	3.50
21376	SUB 29847	S	2.75	35786	RAIL JOINER FOR K TRACK PK/10	S	3.50
21377	COUPLER FOR 21376 PK/4	S	1.40	36705	Z GAUGE RAIL JOINERS PK/10	S	3.50
21411	COUPLER PK/2	S	5.50	36366	COUPLER PK/2	S	5.50
21484	COUPLER PK/2	S	2.90	37896	PICKUP SHOE FOR 3387	S	6.90
21486	FIELD COIL FOR 3028-34-35+	S	11.70	40619	HOOK FOR 7051 CRANE	S	2.75
21583	FRONT COUPLER 3080-3129+ 2/PK	S	5.50	40625	CRANE MAGNET	S	27.30
21586	REAR COUPLER FOR 3080-62 PK/2	S	5.50	41494	PICKUP SHOE FOR PASSENGER CAR	S	6.90
21622	REAR COUPLER 3080-3129 PK/4	S	3.00	41810	PICKUP SHOE FOR 7330-7332	S	4.05

Märkin, Inc. PO Box 51319, 16988 W. Victor Road, New Berlin, WI 53151-0319

American Subsidiary of Gebr. Märkin & Cie. GmbH, Germany and Exclusive Distributor in North America for Märkin Products

ITEM #	DESCRIPTION	SCALE	PRICE
42788	BRIDGE ASSEMBLY FOR 8998	S	206.00
60000	BULB CARTRIDGE CLEAR PK/2	S	5.50
60001	BULB CARTRIDGE RED PK/2	S	5.50
60002	BULB CARTRIDGE GREEN PK/2	S	5.50
60007	BULB FOR 3371 RED PK/2	S	5.50
60008	BULB PK/2	S	5.50
60010	BULB MINI-SCREW CLEAR PK/2	S	5.50
60015	BULB BAYONET BASE CLEAR PK/2	S	5.50
60019	BULB MINI-SCREW CLEAR 1.5 PK/2	S	5.50
60020	BULB MINI-SCREW CLEAR LG PK/2	S	5.50
60030	BRUSHES FOR FLAT ARMATURE PK/2	S	2.90
60146	BRUSHES FOR ROUND ARMATURE PK/2	S	2.90
60200	BULB MINI-CARTRIDGE CLEAR PK/2	S	5.50
60201	BULB MINI-CARTRIDGE RED PK/2	S	5.50
60202	BULB MINI-CARTRIDGE GREEN PK/2	S	5.50
60204	BULB MINI-CARTRIDGE AMBER PK/2	S	5.50
60210	BULB FOR 8896 ETC. PK/2	S	5.50
60211	WHITE BULB	S	4.05
60272	BULB PK/2	S	1.50
60277	BULB PK/2	S	2.90
60281	BULB PK/2	S	1.50
61003	5-POLE ARMATURE	S	19.35
61004	BULB 2/PK	S	5.50
61008	BULB PK/2	S	5.50
61539	PANTOGRAPH FOR 3363-3526	S	19.35
61540	PANTOGRAPH FOR 3321+	S	19.35
62040	PANTOGRAPH FOR 3336-38	S	11.70
70081	Z GAUGE CAR WHEELS PK/4	S	11.70
70154	COUPLER PK/2	S	2.90
70156	COUPLER PK/2	S	5.50
70157	COUPLER PK/2	S	5.50
70158	COUPLER PK/2	S	2.90
70163	CLOSE COUPLER (#7023) PK/2	S	2.90
70412	COUPLER PK/4	S	3.00
70420	Z GAUGE COUPLER PK/4	S	3.00
78568	Z COUPLER SPRING PK/10	S	3.50
78612	WOOD SCREW F/CONTROL BOX PK/10	S	3.50
82513	88 INT'L SERIES-AUSTRALIA	H	39.95
82514	88 INT'L SERIES-NETHERLANDS	H	39.95
82515	88 INT'L SERIES-ITALY	H	39.95
82553	88 INT'L SERIES-AUSTRIA	Z	24.50
82554	88 INT'L SERIES-BELGIUM	Z	24.50
82555	88 INT'S SERIES-U.S.A.	Z	24.50
85878	THYSSENSTAHL TELESCOPING CAR (L)	1	425.00
85893	PEINISALZGITTER TELESCOPING CAR (L)	1	425.00
87288	EXTENSION SET FOR 7288	S	11.70
88125	"SPIRITS OF FRANCE" 3 CAR SET	S	67.50
97170	CONTROL BOX FOR CRANE	S	19.35
99900	RED PAINT 1.75 OZ	S	4.05
99901	BLACK PAINT 1.75 OZ	S	4.05
99902	CREAM PAINT 1.75 OZ	S	4.05
99903	GREEN PAINT 1.75 OZ	S	4.05
99904	BLUE PAINT 1.75 OZ	S	4.05
99905	SILVER PAINT 1.75 OZ	S	4.05
99906	BURGUNDY PAINT 1.75 OZ	S	4.05
99907	GOLD PAINT 1.75 OZ	S	4.05
99908	ORANGE PAINT	S	4.05

THE MÄRKLIN EXCLUSIVE PROGRAM



A special Märklin dealer association has been established in Germany under the name Märklin Dealer Initiative. Participating dealers pay annual dues to belong to this "Exclusiv" association. The main feature of this program is a cooperation with the Märklin company to manufacture special line product runs which are only available to their member dealers and to Märklin's subsidiary companies in the U.S., France, Benelux countries and Switzerland. These items are packaged with a special logo titled "Exclusiv". Contact your local authorized Märklin dealer to get information on what items are available.

JOIN THE CLUB THE MÄRKLIN CLUB

There isn't a better way to get on track with this hobby than by joining the Märklin Club. See below for the two types of memberships available.

V.I.P. MEMBERSHIP

**\$19.50 IS ALL IT COSTS TO BE A V.I.P. MEMBER AND
LOOK AT ALL YOU GET!**

• Newsletters Containing:

- New Product Information
- Exclusive Members-Only Products
- "How To" Articles

* Special Gifts from Märklin

OR GET ON BOARD WITH A BASIC MEMBERSHIP

\$12.50 is the cost for the Basic Membership which entitles you to the Newsletters.

Write today for an application to join.

The Märklin Club
PO Box 51559
New Berlin, WI 53151-0559

Or call: (414) 784-0717

Digital Club

As member of the Märklin Digital Club, you will receive a bi-monthly newsletter dedicated solely to the Digital System. Each newsletter is filled with in-depth articles, computer programming tips and technical expertise. Plus, as a member you will have access to exclusive Digital Hot Line, so if you every have a question or a problem regarding your Digital layout, you can get it resolved quickly.

Write Now and Your First Newsletter is Free

Märklin Digital Club
16988 West Victor Road
PO Box 51319
New Berlin, WI 53151-0319

Märklin, Inc. PO Box 51319, 16988 W. Victor Road, New Berlin, WI 53151-0319

American Subsidiary of Gebr. Märklin & Cie. GmbH, Germany and Exclusive Distributor in North America for Märklin Products